

## 213-500

### PIR Motion Sensing Switch

- Concealed PIR motion sensing switch, constant voltage output, connect with low voltage LED strip.
- Dupont male jack in, dupont female jack out.
- Maximum 3A output current, maximum power 72W@24V.
- Bilateral snap design for easy installation.
- Used for lighting stairs, garages, cabinets, closets, wine cabinets and more.

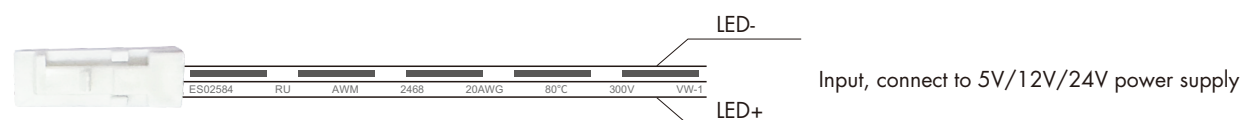
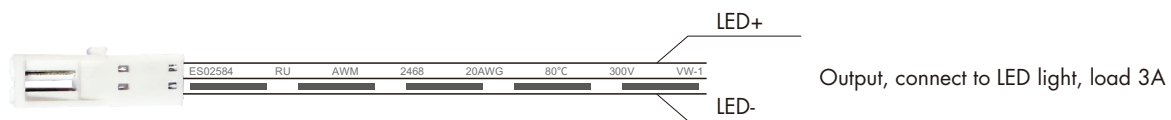
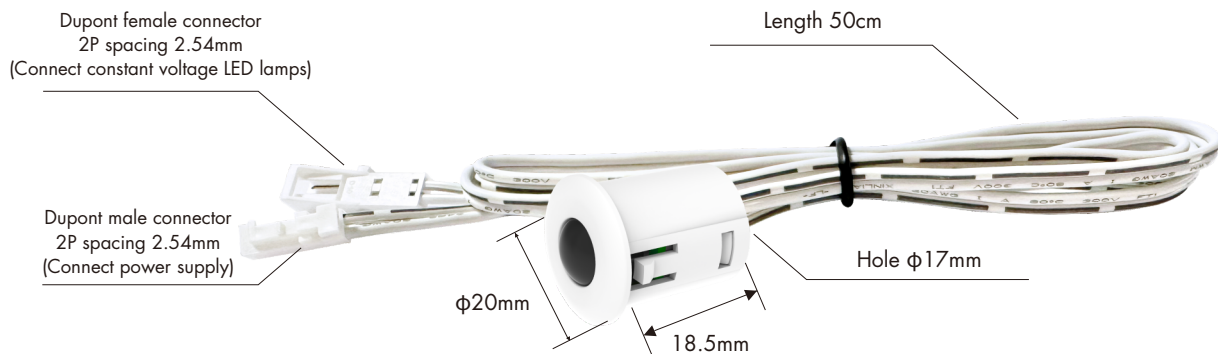


CE RoHS

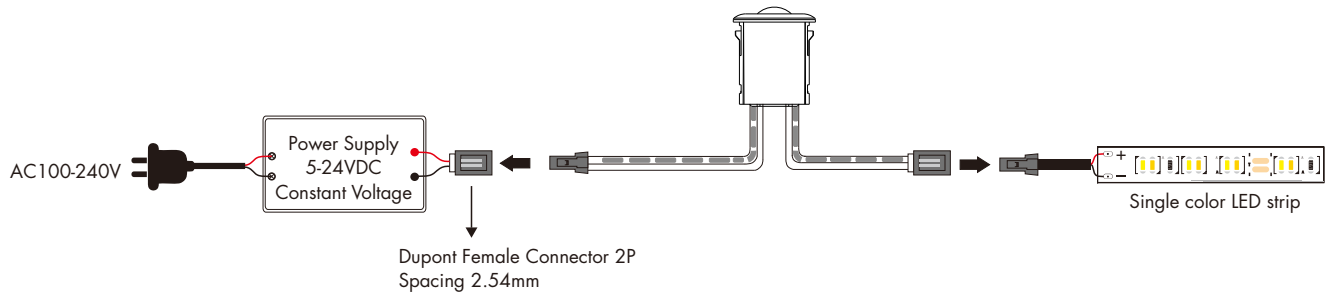
### Technical Parameters

Input and Output		Environment		Safety and EMC	
Input voltage	5-24VDC	Operation temperature	Ta: -30°C ~ +50°C	EMC standard	EN IEC 55015/EN IEC 61547
Output voltage	5-24VDC	Protection	Reverse polarity	Safety standard	EN 61347-1/-2 EN 62493
Output current	Max. 3A	<b>Package</b>		Certification	CE RoHS
Output power	15-72W	Size	L80xW45xH30mm		
<b>Sensor Data</b>		Gross weight	0.028kg		
Detection distance	3-4m				
Detection angle	120°				

### Mechanical Structures

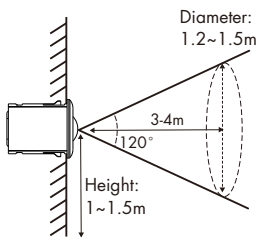


## Wiring Diagram

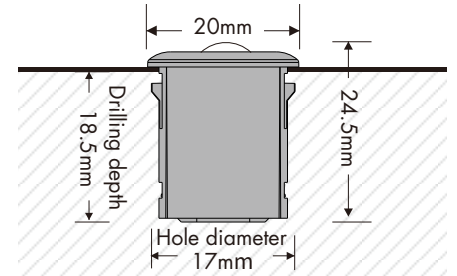
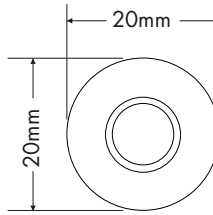
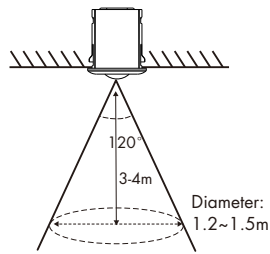


## Sensing Switch Installation

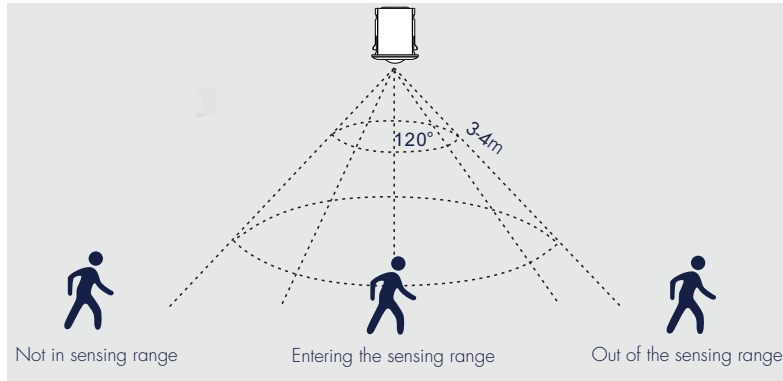
Wall mounting:



Ceiling mounting:



## Sensing Switch Application



When people enter the sensing range, the light turn on; when people exit the sensing range, the light turn off after 30 seconds.

## Installation Precaution

1. Recommended for wall mounting.
2. If the sensing head is exposed to direct sunlight, interference signal will be introduced.
3. The sensing head should be installed in a dry environment and keep away from windows, air conditioner and fans.
4. Make sure that the sensing head stays away from heat source, such as countertops, kitchen appliances which generate hot steam, walls and windows in direct sunlight, air conditioner, heating, refrigerators, stoves and so on.
5. We recommended the wall-mounted installation height is 1-1.5 meters and the ceiling mounting height is no more than 3 meters.
6. There should not be shelter(screen, furniture, large bonsai) within the range of detection.