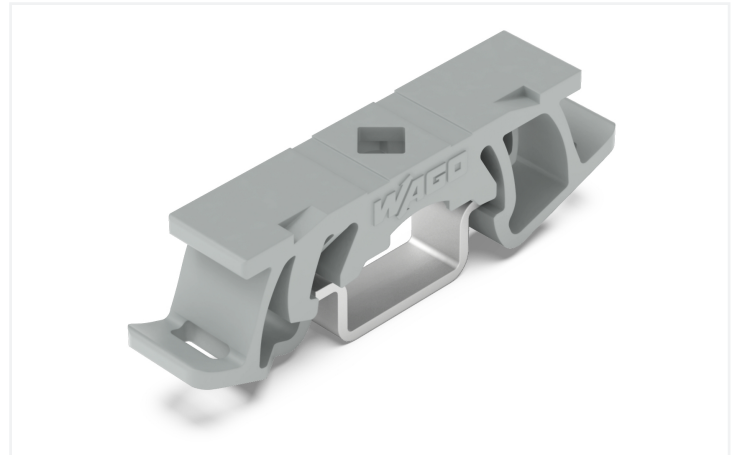


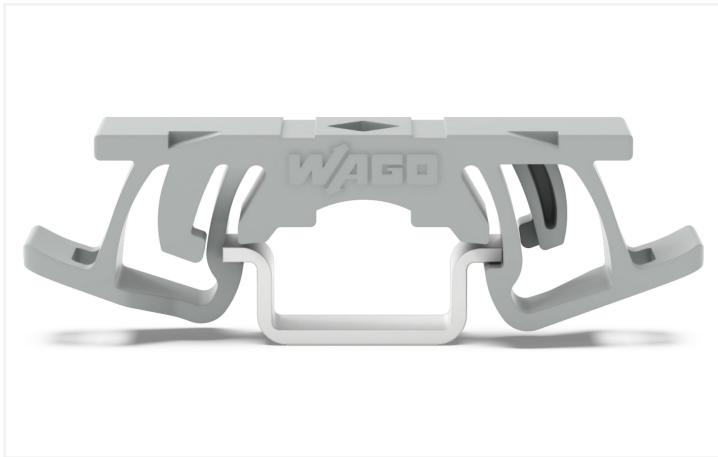
Data Sheet | Item Number: 209-1115

Mounting foot; for DIN-15 rail; can be snapped on terminal blocks with snap-in mounting foot; 6.5 mm wide; gray

<https://www.wago.com/209-1115>



Color: ■ gray



Technical data

Mounting type	DIN-15 rail
---------------	-------------

Physical data

Width	6.5 mm / 0.256 inches
Height	35.1 mm / 1.382 inches
Depth	10.2 mm / 0.402 inches
Depth from upper-edge of DIN-rail	5.6 mm / 0.220 inches

Material data

Color	gray
Material group	I
Insulation material (main housing)	Polyamide (PA66)
Flammability class per UL94	V0
Fire load	0.024 MJ
Weight	0.8 g

Commercial data

PU (SPU)	25 (5) pcs
Packaging type	Box
Country of origin	CN
GTIN	4066966166514
Customs tariff number	39269097900

Product Classification

UNSPSC	39121702
ETIM 9.0	EC002848
ETIM 10.0	EC002848
ECCN	NO US CLASSIFICATION

Environmental Product Compliance

RoHS Compliance Status	Compliant, No Exemption
------------------------	-------------------------

Downloads

Environmental Product Compliance

Compliance Search

Environmental Product
Compliance 209-1115



CAD/CAE-Data

CAD data

2D/3D Models
209-1115

