

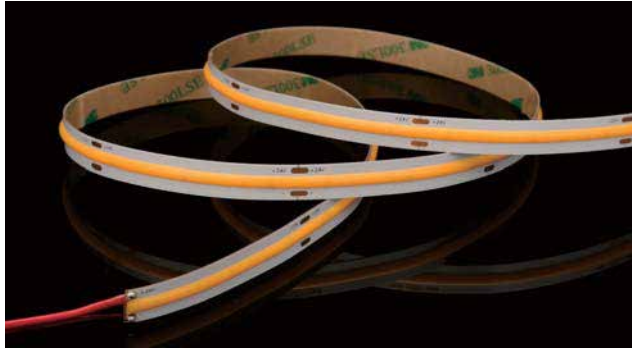
TRONIX

LED STRIP SPECIFICATION

10W 8MM PCB FLEXIBLE COB LED STRIP



10W 8MM PCB FLEXIBLE COB LED STRIP

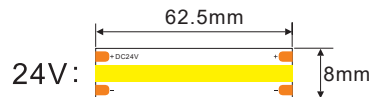
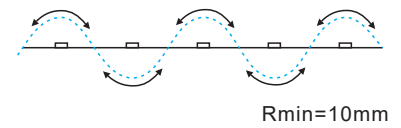
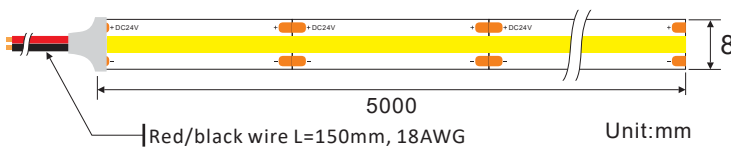


Description

24V, flexible COB LED strip (Step length = 62.5mm) with 3M adhesive tape on the back for easy installation. 1236.4lm/m at 10W/m. 180° beam angle. Very good color reproduction with CRI>90.



Dimensions & Waterproof



Product Specification

Dimension	5000x8x2mm
Chip Type	COB
Chips/m	512(24V)
Step LEDs	32pcs(24V)
Step Length	62.5mm(24V)

Voltage(V)	DC24V
Current(A/m)	0.42A
Power(W/m)	10W
Beam Angle	180°
Operation Temperature	-20°C~50°C

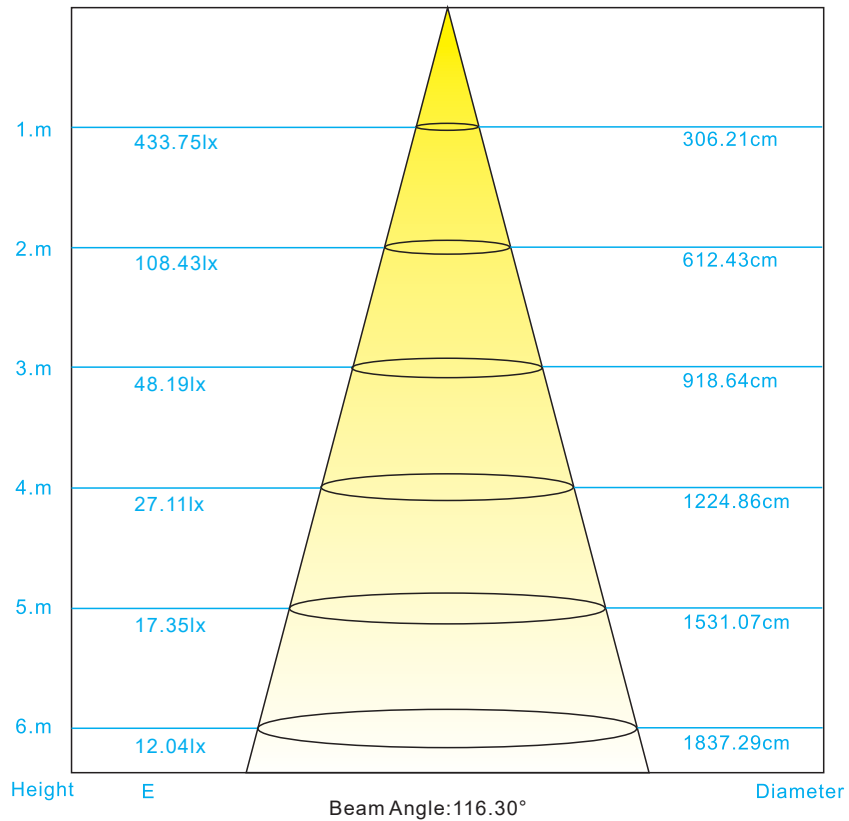
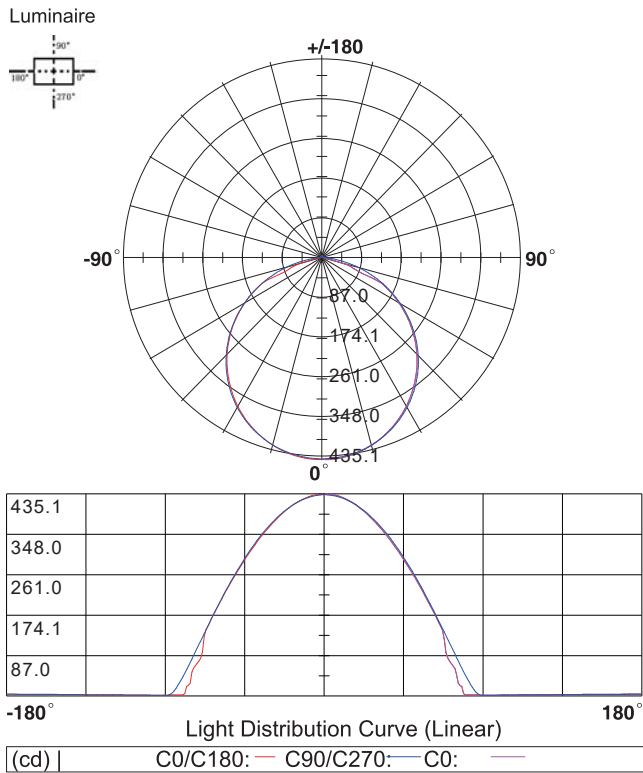
Product Photometrics (Data base on IP20 CRI>90)

CCT (K)	Lumen (lm/m)	Efficacy (lm/w)	CRI	R9	TM-30-15	
					Rf (Fidelity)	Rg (Gamut)
2700±100	1065.5	106.55	92.09	63.96	89.84	99.78
3000±100	1124.4	112.44	91.19	64.82	90.36	98.89
4000±200	1225.5	122.55	92.82	66.98	90.28	99.97
6500±300	1236.4	123.64	93.57	69.98	92.56	100.23

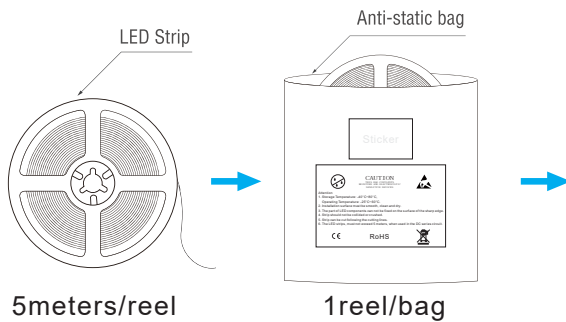
Color	Dominant Wavelength (nm)	Lumen (lm/m)	Power (w/m)	Efficacy (lm/w)
Red	620-630	179.7	10	17.97
Green	520-530	1289.9	10	128.99
Blue	450-460	199.8	10	19.98
Yellow	585-595	803.3	10	80.33

10W 8MM PCB FLEXIBLE COB LED STRIP

Light Distribution Curve [Data base on 1m IP20 6500K CRI>90, Unit:cd]



Packing Information (Data base on IP20)



Precautions for use

1. To protect the LED light strip, do not hit the light-emitting area with hard things.
2. After unpacking, please use in 24H to avoid the oxidation effect of solder joints.
3. Avoid direct contact with high temperature objects in the light-emitting area of the lamp, and the instantaneous contact temperature of the surface of the light-emitting area should be less than 210 °C.
4. The soldering iron temperature should be less than 300° during soldering, and the soldering time of single solder should be controlled within 3s.
5. It is strictly forbidden to twist the lamp with short distance. The single lamp strip (0.5 m) has a maximum twist angle of 7 20°.



6. The bend diameter at any position needs to be greater than 1cm.

