

MEM Single-lever basin mixer - Platinum

MEM

29 210 782 Product version from 3/10/2014 to 3/18/2019

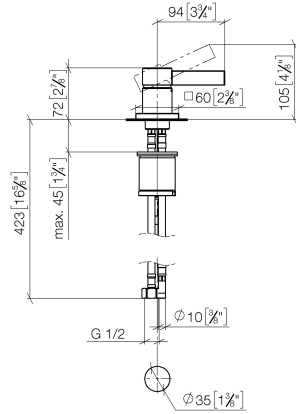
- hole diameter 35 mm
- rosette 60 x 60 mm
- 3x screw-in M 10 x 1 pressure hose, leak-tested



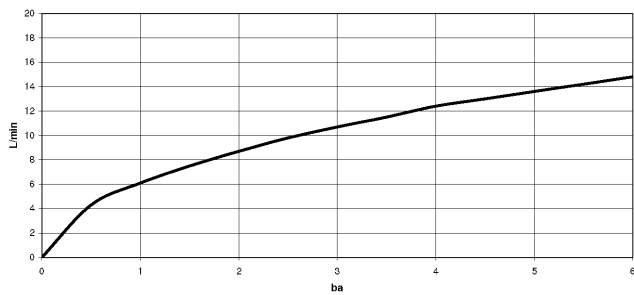
| | | |
|---|-------------------------------|---------------|
|  | Platinum | 29 210 782-08 |
|  | Chrome | 29 210 782-00 |
|  | Brushed Platinum | 29 210 782-06 |
|  | Dark Chrome | 29 210 782-19 |
|  | Brushed Light Gold (PVD) | 29 210 782-27 |
|  | Brushed Durabrass (23kt Gold) | 29 210 782-28 |
|  | Brushed Gold (PVD) | 29 210 782-37 |
|  | Brushed Bronze (PVD) | 29 210 782-42 |
|  | Brushed Dark Bronze (PVD) | 29 210 782-43 |
|  | Brushed Champagne (22kt Gold) | 29 210 782-46 |
|  | Champagne (22kt Gold) | 29 210 782-47 |
|  | Brushed Dark Platinum | 29 210 782-99 |

29 210 782 Product version from 3/10/2014 to 3/18/2019

mm [inches]



Flow rate chart



Codes & Standards

DIN 4109

Executive Order
no. 1007

ISO 3822

Ü-Zeichen



MEM Single-lever basin mixer - Platinum

MEM

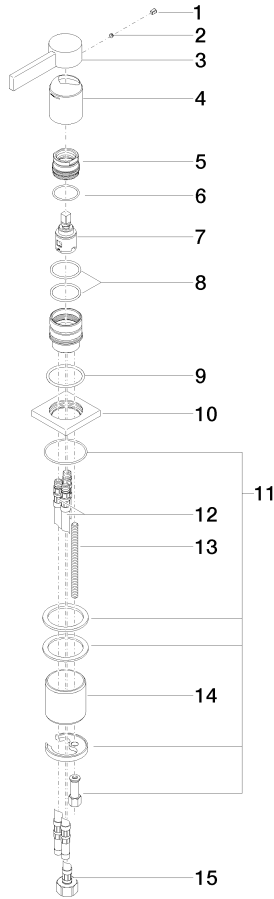
29 210 782 Product version from 3/10/2014 to 3/18/2019

Certificates and sustainability

| | | |
|--------|----------|--|
| LGA_28 | GDV_0400 | EPD-DOR-20230287 -IBA1-EN Environmental.prod uct-declarat |
|--------|----------|--|

29 210 782 Product version from 3/10/2014 to 3/18/2019

Parts for other finishes can be found here: [Chrome](#)



Spare parts list

| No. | Item Number | Name | Quantity used | Delivery time |
|-----|--|--|---------------|---------------|
| | 5 09 24 04 288 90 | Mounting Nut Ø 34 x 26,5 mm - | 1.00 | 14 |
| | 14 09 18 40 079 90 | Sleeve Ø 50 x 50 mm - | 1.00 | 14 |
| | 12 04 30 04 016 00 90 | High pressure hose M10x1 x 420 mm - | 2.00 | - |
| | Spare part can no longer be ordered, please order the replacement item | | | |
| | 0430041040090 | High pressure hose M10x1 x 3/8" x 420 mm - | | |
| | 8 09 14 10 192 90 | O-Ring 35,0 x 2,5 mm - | 2.00 | 14 |
| | 1 09 31 20 017 90 | Plug Masking plug - | 1.00 | - |
| | Spare part can no longer be ordered, please order the replacement item | | | |
| | 09312010990 | Plug - | | |
| | 4 09 11 02 289-08 | Cover Ø 41 x 53 mm - Platinum | 1.00 | 54 |
| | 9 09 14 10 050 90 | O-Ring 41,0 x 3,0 mm - | 1.00 | 14 |
| | 10 09 27 78 040-08 | Rosette 60 x 60 x 9 x Ø 35 mm - Platinum | 1.00 | 54 |
| | 7 90 15 05 042 00 90 | Cartridge Ø 25 x 52 mm - | 1.00 | 14 |
| | 6 09 14 10 137 90 | O-Ring EPDM 70 29,0 x 2,0 mm - | 1.00 | 14 |
| | 3 09 20 78 057-08 | Handle Lever 24 x 41 x 96 mm - Platinum | 1.00 | 54 |
| | 13 09 31 11 012 90 | Mounting Threaded bolt M8 x110 mm - | 1.00 | 14 |
| | 11 04 30 11 038 02 90 | Mounting with O-ring Ø49 x 2mm Ø 52 x 1,5 mm - | 1.00 | 14 |
| | 15 04 30 04 019 00 90 | High pressure hose with sleeve nut M10x1 x 1/2" x 420 mm - | 1.00 | 14 |
| | 2 90 31 11 063 00 90 | Mounting Threaded pin with hexagon socket with cup point M5 x 4 mm - | 1.00 | 14 |