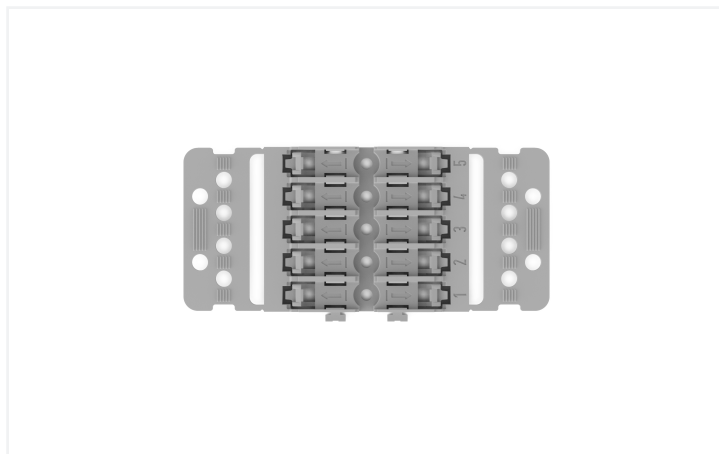


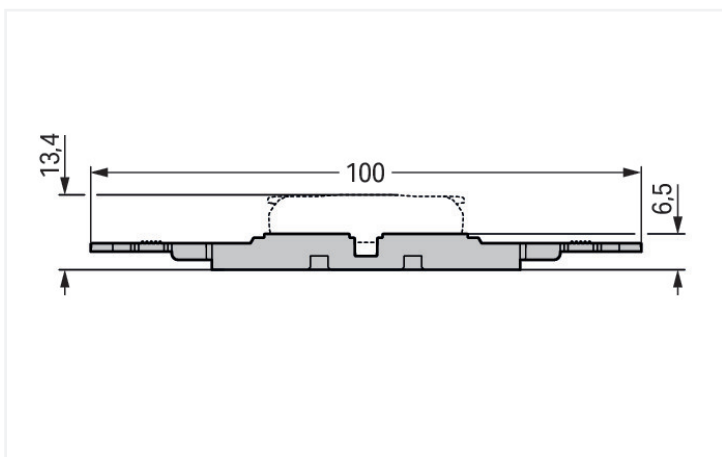
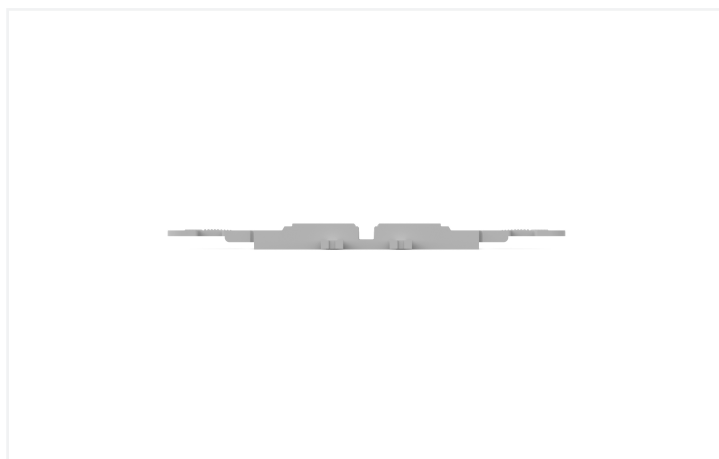
Data Sheet | Item Number: 221-2505

Mounting carrier with strain relief; 5-way; for inline splicing connector with lever; for screw mounting; gray

<https://www.wago.com/221-2505>



Color: ■ gray



Physical data

Width	47.8 mm / 1.882 inches
Height	6.5 mm / 0.256 inches
Height from the surface	6.5 mm / 0.256 inches
Depth	100 mm / 3.937 inches

Mechanical data

Design	5x
Mounting type	Screw mount

Material data

Note (material data)	Information on material specifications can be found here
Color	gray
Material group	I
Insulation material (main housing)	Polyamide (PA66)
Flammability class per UL94	V0
Fire load	0.305 MJ
Weight	10.2 g

Commercial data

PU (SPU)	25 (5) pcs
Packaging type	Box
Country of origin	CN
GTIN	4066966119862
Customs tariff number	39269097900

Product Classification

UNSPSC	39121702
ETIM 9.0	EC002848
ETIM 10.0	EC002848
ECCN	NO US CLASSIFICATION

Environmental Product Compliance

RoHS Compliance Status	Compliant, No Exemption
------------------------	-------------------------

Downloads




Environmental Product Compliance

Compliance Search

Environmental Product
Compliance 221-2505



CAD/CAE-Data

CAD data	CAE data
2D/3D Models 221-2505 	EPLAN Data Portal 221-2505 
	ZUKEN Portal 221-2505 

1 Compatible Products

1.1 Optional Accessories

1.1.1 Installation

1.1.1.1 Mounting accessories



Item No.: 209-119
 Fixing screw; for 209-120 mounting carrier



Item No.: 209-123
 Mounting foot with screw; can be screwed on terminal blocks with fixing flange; 6.4 mm wide; gray



Item No.: 209-120
 Mounting foot; can be snapped on terminal blocks with snap-in mounting foot; for mounting on relay-modules; 6.4 mm wide; gray

1.1.2 Marking

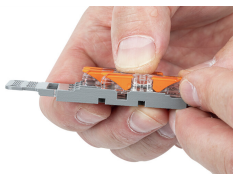
1.1.2.1 Marking strip



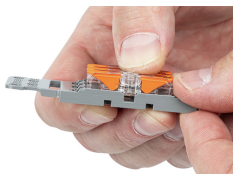
Item No.: 210-834
 Marking strips; on reel; 5 mm wide; plain; Self-adhesive; white

Installation Notes

Installation



Place the inline splicing connector on the carrier in front of the mounting position.



Push the connector to the center position until it snaps into place.



Mounting carrier without strain relief – snapped onto DIN-rail



Various combinations of 1- to 5-connector mounting carriers are possible via side-by-side latching mechanism.

Subject to changes. Please also observe the further product documentation!

Current addresses can be found at: www.wago.com