

### Features

- Insaver Slim is a ceiling recessed LED downlight (IP44 from the front), Die-cast aluminium body, loop in loop out connector for quick installation, SylSmart Connected SSA01D, 20W; 2500lm; 125lm/W; 4000K; UGR <19 with shallow product depth 60mm. Meets TP(a) requirements.

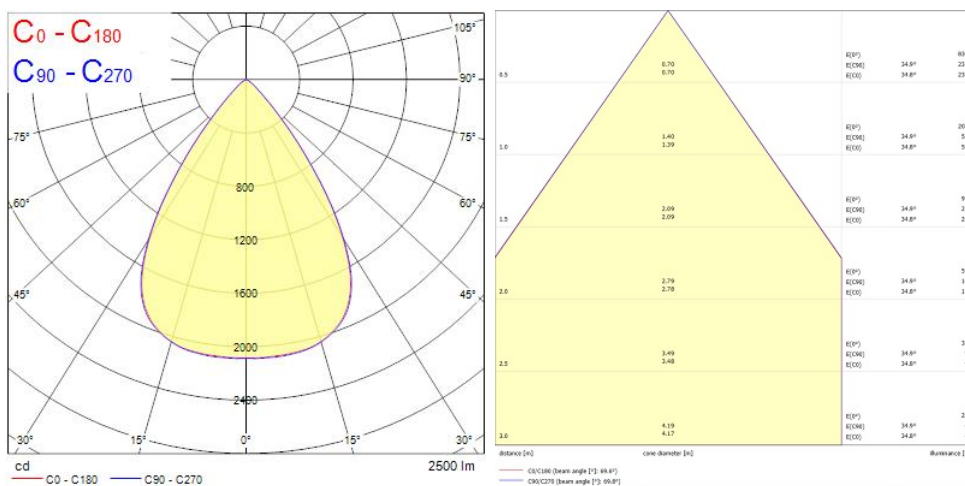
### Product Overview

Product name	INSAVER SLIM UGR19 IP44 SSA01D 205 2500lm 840
Technology	LED
Cap/Base	N/A
Housing	Aluminium
Mount	Ceiling recessed mounting
General application	Hospitality, Office, Retail
ETIM Class	EC001744
Fixture luminous flux (lm)	2500
Luminaire efficacy (lm/W)	125
Colour temperature (K)	4000
Light colour	Neutral White
CRI (Ra)	80
Colour Consistency (SDCM)	3
Colour Variation Initial (SDCM)	3
Beam Angle (°)	70
Glare control	< 19
Photobiological Risk Group	RG1
Total power consumption (W)	20
Electrical protection	Class II

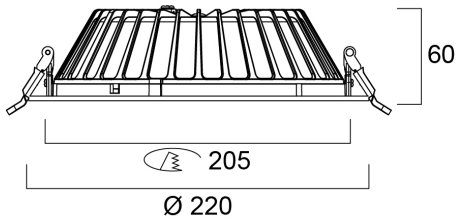
## INSAVER SLIM UGR19 IP44 SSA01D 205 2500lm 840 0030489

Control gear type	LED driver constant current
Control gear mounting	Remote
Dimmable	Yes
Minimum dimming level (%)	1
LED Flickering Rate	Ultra low (5% or less)
Housing colour	RAL 9010 - Pure white
IP rating	IP44/20
IK rating	IK07
Product EAN number	5410288304892
Warranty	5 years
Useful luminous flux (#use)	2500
Dimming method	SylSmart SSA

### Photometry



### Technical drawings



### Data table

#### GENERAL DATA

Product name	INSAVER SLIM UGR19 IP44 SSA01D 205 2500lm 840
Technology	LED
Cap/Base	N/A
Housing	Aluminium
Mount	Ceiling recessed mounting
General application	Hospitality, Office, Retail
Operating temperature range (°C)	-20°C...+40°C
ETIM Class	EC001744
Warranty	5 years

#### OPTICAL DATA

Useful luminous flux (#use)	2500
Fixture luminous flux (lm)	2500
Luminaire efficacy (lm/W)	125
Colour temperature (K)	4000

## INSAVER SLIM UGR19 IP44 SSA01D 205 2500lm 840 0030489

Light colour	Neutral White
CRI (Ra)	80
Colour Variation Initial (SDCM)	3
Colour Consistency (SDCM)	3
Beam Angle (°)	70
Distribution type	Symmetric
Glare control	< 19
Photobiological Risk Group	RG1

### ELECTRICAL DATA

Total power consumption (W)	20
Primary Supply/Product voltage - min (V)	220.0
Primary Supply/Product voltage - max (V)	240.0
Lamp power factor	0.9
THD (at 230 V, 50 Hz, full load, at 100% dimming level) ≤ xx.x %	10
Electrical protection	Class II
Control gear required	Yes
Control gear type	LED driver constant current
Control gear mounting	Remote
Dimmable	Yes
Dimming method	SylSmart SSA
Minimum dimming level (%)	1
Drive current (mA)	600
Inrush Current (A)	20
Inrush Duration (µs)	151
Glow Wire Test (°C)	850
Energy Efficiency Class (A->G) of contained light source	D
Nominal Frequency (Hz)	50/60Hz
LED Flickering Rate	Ultra low (5% or less)
Max. products per 10A C Breaker	50
Max. products per 13A C Breaker	43
Max. products per 16A C Breaker	53
Max. products per 20A C Breaker	66

## INSAVER SLIM UGR19 IP44 SSA01D 205 2500lm 840 0030489

Max. products per 10A B Breaker	50
Max. products per 13A B Breaker	26
Max. products per 16A B Breaker	80
Max. products per 20A B Breaker	40
Connectable conductor cross section - Min (mm <sup>2</sup> )	0.5
Connectable conductor cross section - Max (mm <sup>2</sup> )	1.5

### LIFETIME DATA

Lifespan L70 B50	100000
Lifespan L70 B20	100000
Lifespan L70 B10	100000
Lifespan L80 B50	100000
Lifespan L80 B20	88000
Lifespan L80 B10	80000
Lifespan L90 B50	50000
Lifespan L90 B20	43000
Lifespan L90 B10	39000

### PHYSICAL DATA

Housing colour	RAL 9010 - Pure white
IP rating	IP44/20
IK rating	IK07
Diffuser finish	Other
Diffuser material	None
Reflector finish	Silver
Nominal Product Height (mm)	60
Nominal Product Diameter (mm)	220
Cutout Dimensions (W x L in mm or Diameter in mm)	205
Weight (kg)	0.9

### PACKAGING

## INSAVER SLIM UGR19 IP44 SSA01D 205 2500lm 840 0030489

Product EAN number	5410288304892
Packaging single length / height (cm)	23.0
Packaging single width (cm)	23.0
Packaging single depth (cm)	9.5
DUN14 (outer)	05410288304892
Units per outer package	1
Packaging outer length / height (cm)	23.0
Packaging outer width (cm)	23.0
Packaging outer depth (cm)	9.5

### SAFETY DATA

Optimal operating condition (°C)	-20-40
Special purpose lamp	No
Dry applications use only	No
Suitable for household illumination	No