

# Orientation lighting with warm white LEDs, 360 lux, 2800 K (warm white LEDs), claw fixing

**170-38500**

CE

4 year warranty

Switch for orientation lighting with warm white LEDs 360 lux, with claw fixing. A faceplate in the colour of your choice must be ordered separately.

This article is protected by at least one patent (or patent application). For more info on patents, see [www.niko.eu/innovation](http://www.niko.eu/innovation).

- wire is fixed firmly due to the high-quality plug-in terminal with a long life span, tested according to the norm
- since the conductor release on the mechanisms is located at the front, the wiring cannot push on the release when you place it in the flush-mounting box.

Faster and easier installation:

- all connections terminals are located at the top of the base:

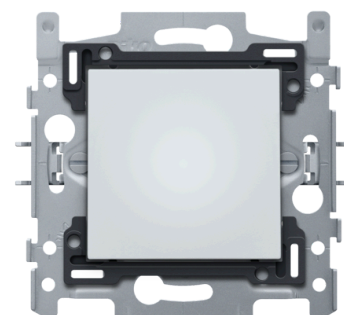
Niko quality:

- long life span since the plug-in terminal stays within the limits of the norm during a temperature and power drop
- metal base is held firmly in place, even on uneven walls, doesn't break and is not subject to stress cracking (small ruptures)

## Technical data

Orientation lighting with warm white LEDs, 360 lux, 2800 K (warm white LEDs), claw fixing.

- Led colour: white
- Led colour temperature: 2800 K (warm white LEDs)
- Number of leds: 0
- Led light intensity: 360 lux
- Halogen-free: yes
- Protection degree: IP41 for the combination of a mechanism, central plate and faceplate
- Impact resistance: the combination of a mechanism, a central plate and a faceplate has an impact-resistance of IK06



- Luminous flux: 0.77 lumen
- Flush-mounting frame type:
  - 1 mm-thick metal
  - galvanized on all sides after cutting, even on the cut edges
  - with 4 grooves with screw hole of 7 mm
  - with 4 screw holes (indicated by a screw symbol) with a diameter of 3 mm for mounting on panels
- Type of fastening:
  - simple mounting in a flush-mounting box with grip surfaces
  - with claws that rotate open using screws with a combination screwhead (Pz1 or slot 1 x 5 mm), for mounting in a flush-mounting box with grip surfaces
  - engagement depth of claws: 31 mm
  - claws can be pushed back into their original position
  - claws can be easily pushed out using a screwdriver
- Centre-to-centre distance:
  - simple and quick assembly of one or more mechanisms by the indication (chalk line, laser, etc.) of the centre of the flush-mounting frame
  - vertical coupling centre-to-centre distance 60 mm by sliding several bases into each other, they lock themselves automatically
  - vertical coupling centre-to-centre distance 71 mm using pre-formed lips at the bottom, by folding the lips downwards over a length of 1 mm, the bases support each other and the centre-to-centre distance is guaranteed.
  - horizontal connection of multiple bases is quick and perfect thanks to the folded-up dovetails on the left and right sides
  - extra robustness due to the folded-up edges on the outside of the base and the continuation into the inside of the base
- Base end border: the flush-mounting frame is equipped, both on the top and the bottom, with a dark grey, plastic end border. This border is made of PC+ASA and is joined to the flush-mounting frame using a melting process. The corners of the two end borders are equipped with rectangular openings (7.9 x 1.5 mm) each containing a multi-positional snap hook. Thanks to the snap hooks, the 4 rectangular openings ensure that the faceplate can always be attached flat to the wall, even in cases of untidy plasterwork. This works in two directions: If the flush-mounting box sticks out of the plasterwork, the multi-positional snap hooks can compensate for a 1 to 1.2 mm margin; if the flush-mounting box is sunk too deeply in the plasterwork, the snap hooks can compensate for up to a 1.8 mm margin. The end borders also have 4 round openings that ensure the correct positioning of the faceplate in relation to the central plate
- Terminal wire connection: plug-in terminals
- Terminals wire capacity: 2 x 2.5 mm<sup>2</sup>
- Suitable type of wire: rigid (solid or stranded)
- Markings on the flush-mounting frame: indelibly indicated at the rear side: terminals
- Minimum ambient temperature: 5 °C
- Maximum ambient temperature: 40 °C
- Dimensions (HxWxD): 71 mm x 73 mm
- Marking: CE