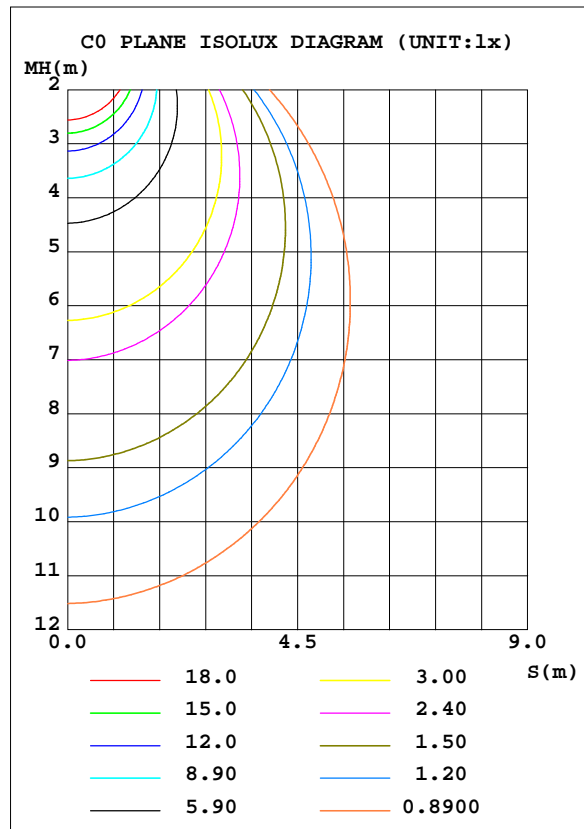
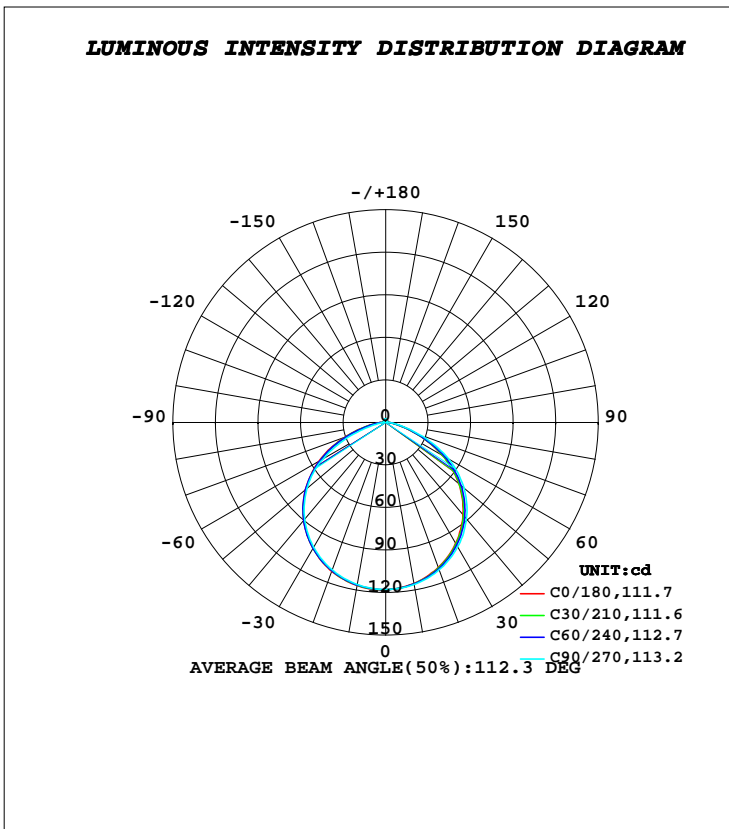


LUMINAIRE PHOTOMETRIC TEST REPORT

Test:U:24.000V I:0.1820A P:4.3000W PF:1.0000 Freq:0Hz Lamp Flux:339.657x1 lm		
NAME: 127-082	TYPE:LED	
MFR.: Tronix Lighting		

DATA OF LAMP		PHOTOMETRIC DATA Eff: 78.99 lm/W			
MODEL		I _{max} (cd)	118.2	S/MH(C0/180)	1.24
NOMINAL POWER(W)	4.3	LOR(%)	100.0	S/MH(C90/270)	1.28
RATED VOLTAGE(V)	24	TOTAL FLUX(lm)	339.66	η UP, DN(C0-180)	1.6, 47.8
NOMINAL FLUX(lm)	339.657	CIE CLASS	DIRECT	η UP, DN(C180-360)	1.7, 48.8
LAMPS INSIDE	1	η up(%)	3.4	CIBSE SHR NOM	1.25
TEST VOLTAGE(V)	24	η down(%)	96.6	CIBSE SHR MAX	1.35



C Range: 0 - 360DEG
C Interval: 30.0DEG
Test Speed: HIGH
Temperature:25.3DEG
Operators:DAMIN
Test Date:2019-03-31

γ Range: 0 - 180DEG
γ Interval: 1.0DEG
Test System:EVERFINE GO-2000B_V1 SYSTEM V2.0.406.11
Humidity:65.0%
Test Distance:8.000m [K=0.7063]
Remarks:

ZONAL FLUX DIAGRAM

ZONAL FLUX DIAGRAM:

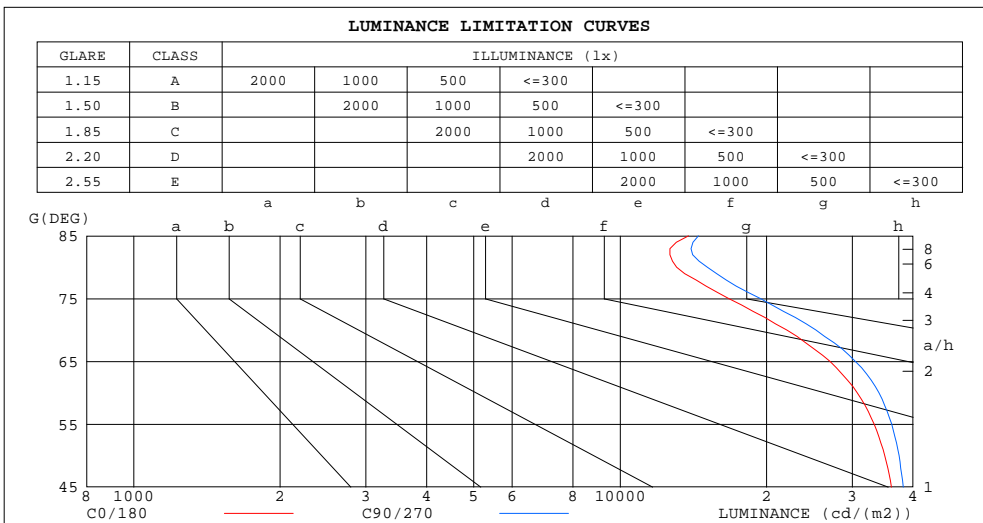
γ	C0	C45	C90	C135	C180	C225	C270	C315	γ	Φ zone	Φ total	%lum,lamp
10	115.2	115.6	116.0	116.5	116.7	116.4	116.0	115.7	0- 10	11.17	11.17	3.29,3.29
20	108.8	109.5	110.5	111.3	111.6	111.3	110.6	109.8	10- 20	32.10	43.27	12.7,12.7
30	98.68	99.65	101.5	102.4	102.6	102.4	101.6	100.00	20- 30	48.97	92.24	27.2,27.2
40	84.91	86.18	88.78	89.77	90.05	89.97	88.96	86.49	30- 40	59.47	151.7	44.7,44.7
50	67.44	68.78	72.20	73.26	74.02	73.67	72.51	69.14	40- 50	61.79	213.5	62.9,62.9
60	46.08	47.02	51.06	52.73	54.00	53.17	50.23	47.49	50- 60	54.65	268.2	78.9,78.9
70	22.59	22.74	25.91	28.93	31.00	29.63	24.21	23.68	60- 70	37.77	305.9	90.1,90.1
80	6.801	6.934	7.869	9.843	11.43	10.63	6.023	7.499	70- 80	17.14	323.1	95.1,95.1
90	2.234	2.241	0.9490	2.696	3.300	3.011	0.9922	2.381	80- 90	5.170	328.2	96.6,96.6
100	1.822	1.510	0.9054	1.525	2.002	1.727	1.055	1.600	90-100	1.962	330.2	97.2,97.2
110	1.716	1.383	1.188	1.417	1.850	1.537	1.288	1.487	100-110	1.571	331.8	97.7,97.7
120	1.677	1.513	1.462	1.551	1.802	1.634	1.538	1.603	110-120	1.511	333.3	98.1,98.1
130	1.832	1.742	1.727	1.765	1.901	1.821	1.774	1.798	120-130	1.511	334.8	98.6,98.6
140	2.054	2.000	1.993	2.002	1.986	2.022	2.005	2.019	130-140	1.468	336.3	99,99
150	2.287	2.241	2.248	2.256	2.213	2.250	2.247	2.246	140-150	1.335	337.6	99.4,99.4
160	2.503	2.469	2.487	2.487	2.444	2.465	2.475	2.465	150-160	1.091	338.7	99.7,99.7
170	2.668	2.650	2.670	2.667	2.604	2.622	2.641	2.625	160-170	0.7236	339.4	99.9,99.9
180	2.738	2.728	2.752	2.750	2.736	2.728	2.753	2.747	170-180	0.2561	339.7	100,100
DEG	LUMINOUS INTENSITY:cd									UNIT:lm		

C Range: 0 - 360DEG
C Interval: 30.0DEG
Test Speed: HIGH
Temperature:25.3DEG
Operators:DAMIN
Test Date:2019-03-31

γ Range: 0 - 180DEG
 γ Interval: 1.0DEG
Test System:EVERFINE GO-2000B_V1 SYSTEM V2.0.406.11
Humidity:65.0%
Test Distance:8.000m [K=0.7063]
Remarks:

LUMINANCE LIMITATION CURVES

Test:U:24.000V I:0.1820A P:4.3000W PF:1.0000 Freq:0Hz Lamp Flux:339.657x1 lm		
NAME: 127-082	TYPE:LED	
MFR.: Tronix Lighting		



LUMINANCE cd/(m2)		
G(DEG)	C0/180	C90/270
85	13826	14486
80	13056	15106
75	16728	19430
70	22015	25252
65	26991	30428
60	30720	34042
55	33286	36174
50	34973	37443
45	36131	38176

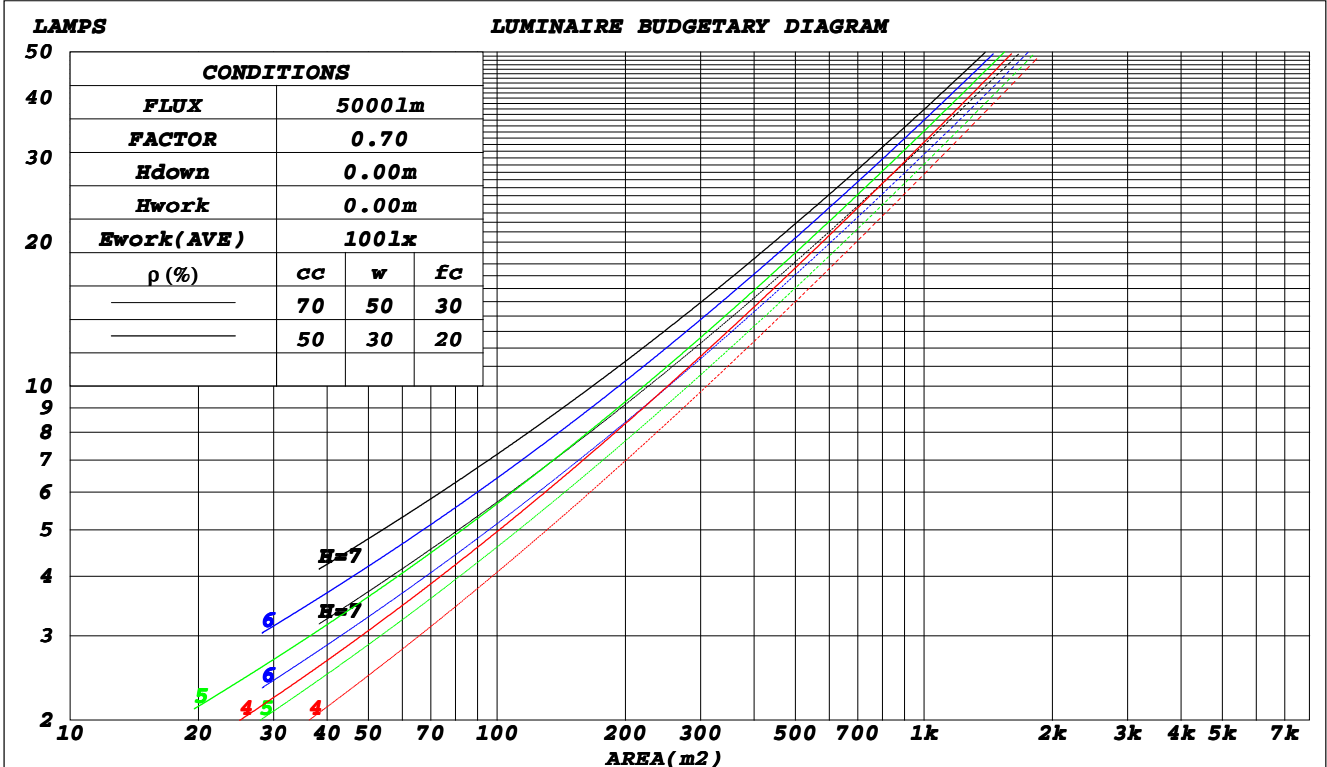
C Range: 0 - 360DEG
C Interval: 30.0DEG
Test Speed: HIGH
Temperature: 25.3DEG
Operators: DAMIN
Test Date: 2019-03-31

γ Range: 0 - 180DEG
γ Interval: 1.0DEG
Test System: EVERFINE GO-2000B_V1 SYSTEM V2.0.406.11
Humidity: 65.0%
Test Distance: 8.000m [K=0.7063]
Remarks:

CU AND LUMINAIRE BUDGETARY ESTIMATE DIAGRAM

Test:U:24.000V I:0.1820A P:4.3000W PF:1.0000 Freq:0Hz Lamp Flux:339.657x1 lm		
NAME: 127-082	TYPE:LED	
MFR.: Tronix Lighting		

ρcc	80%			70%			50%			30%			10%			0
	50%	30%	10%	50%	30%	10%	50%	30%	10%	50%	30%	10%	50%	30%	10%	0
ρw																
ρfc																
RCR	RCR:Room Cavity Ratio						Coefficients of Utilization(CU)									
0.0	1.18	1.18	1.18	1.15	1.15	1.15	1.09	1.09	1.09	1.04	1.04	1.04	.99	.99	.99	.97
1.0	1.04	.90	.96	1.01	.98	.94	.96	.93	.91	.92	.90	.87	.88	.86	.84	.82
2.0	.91	.84	.79	.89	.83	.78	.85	.80	.75	.81	.77	.73	.77	.74	.71	.69
3.0	.80	.72	.66	.78	.71	.65	.75	.68	.63	.72	.66	.62	.69	.64	.60	.58
4.0	.71	.62	.56	.69	.61	.55	.66	.60	.54	.64	.58	.53	.61	.56	.52	.50
5.0	.63	.55	.48	.62	.54	.48	.60	.52	.47	.57	.51	.46	.55	.50	.45	.43
6.0	.57	.48	.42	.56	.48	.42	.54	.46	.41	.52	.45	.40	.50	.44	.40	.38
7.0	.52	.43	.37	.51	.43	.37	.49	.42	.36	.47	.41	.36	.46	.40	.35	.33
8.0	.47	.39	.33	.46	.38	.33	.45	.37	.32	.43	.37	.32	.42	.36	.32	.30
9.0	.43	.35	.30	.42	.35	.29	.41	.34	.29	.40	.33	.29	.39	.33	.28	.27
10.0	.40	.32	.27	.39	.32	.27	.38	.31	.26	.37	.31	.26	.36	.30	.26	.24



C Range: 0 - 360DEG
 C Interval: 30.0DEG
 Test Speed: HIGH
 Temperature: 25.3DEG
 Operators: DAMIN
 Test Date: 2019-03-31

γ Range: 0 - 180DEG
 γ Interval: 1.0DEG
 Test System: EVERFINE GO-2000B_V1 SYSTEM V2.0.406.11
 Humidity: 65.0%
 Test Distance: 8.000m [K=0.7063]
 Remarks:

WEC AND CCEC

Test:U:24.000V I:0.1820A P:4.3000W PF:1.0000 Freq:0Hz Lamp Flux:339.657x1 lm		
NAME: 127-082	TYPE:LED	
MFR.: Tronix Lighting		

ρ_{cc}	80%			70%			50%			30%			10%			0
ρ_w	50%	30%	10%	50%	30%	10%	50%	30%	10%	50%	30%	10%	50%	30%	10%	0
ρ_{fc}	20%			20%			20%			20%			20%			0
RCR	RCR:Room Cavity Ratio						Wall Exitance Coefficients(WEC)									
0.0																
1.0	.295	.168	.053	.287	.164	.052	.272	.156	.050	.258	.149	.048	.245	.142	.046	
2.0	.280	.153	.047	.273	.150	.046	.259	.144	.045	.247	.139	.043	.236	.133	.042	
3.0	.261	.139	.042	.255	.136	.041	.243	.131	.040	.232	.127	.039	.221	.123	.038	
4.0	.242	.126	.037	.236	.124	.037	.226	.120	.036	.216	.116	.035	.207	.112	.034	
5.0	.225	.115	.033	.220	.113	.033	.210	.109	.032	.201	.106	.032	.193	.103	.031	
6.0	.209	.105	.030	.205	.103	.030	.196	.101	.029	.188	.098	.029	.181	.095	.028	
7.0	.195	.097	.027	.191	.095	.027	.183	.093	.027	.176	.090	.026	.170	.088	.026	
8.0	.183	.089	.025	.179	.088	.025	.172	.086	.025	.166	.084	.024	.159	.082	.024	
9.0	.171	.083	.023	.168	.082	.023	.162	.080	.023	.156	.078	.022	.150	.076	.022	
10.0	.161	.077	.021	.158	.077	.021	.153	.075	.021	.147	.073	.021	.142	.072	.021	

ρ_{cc}	80%			70%			50%			30%			10%			0
ρ_w	50%	30%	10%	50%	30%	10%	50%	30%	10%	50%	30%	10%	50%	30%	10%	0
ρ_{fc}	20%			20%			20%			20%			20%			0
RCR	RCR:Room Cavity Ratio						Ceiling Cavity Exitance Coefficients(CCEC)									
0.0	.216	.216	.216	.185	.185	.185	.126	.126	.126	.072	.072	.072	.023	.023	.023	
1.0	.205	.182	.161	.175	.156	.139	.120	.108	.096	.069	.062	.056	.022	.020	.018	
2.0	.197	.158	.125	.168	.136	.108	.115	.094	.076	.067	.055	.044	.021	.018	.014	
3.0	.189	.140	.102	.162	.121	.088	.111	.084	.062	.064	.049	.036	.021	.016	.012	
4.0	.181	.127	.086	.156	.110	.074	.107	.077	.052	.062	.045	.031	.020	.015	.010	
5.0	.174	.117	.074	.150	.101	.065	.103	.071	.046	.060	.041	.027	.019	.014	.009	
6.0	.167	.108	.066	.144	.094	.058	.099	.066	.041	.058	.039	.024	.019	.013	.008	
7.0	.161	.102	.060	.138	.088	.052	.095	.062	.037	.055	.036	.022	.018	.012	.007	
8.0	.154	.096	.056	.133	.083	.049	.092	.058	.034	.053	.034	.021	.017	.011	.007	
9.0	.148	.091	.052	.128	.079	.045	.089	.055	.032	.052	.033	.019	.017	.011	.006	
10.0	.143	.087	.049	.123	.075	.043	.085	.053	.031	.050	.031	.018	.016	.010	.006	

C Range: 0 - 360DEG
 C Interval: 30.0DEG
 Test Speed: HIGH
 Temperature:25.3DEG
 Operators:DAMIN
 Test Date:2019-03-31

γ Range: 0 - 180DEG
 γ Interval: 1.0DEG
 Test System:EVERFINE GO-2000B_V1 SYSTEM V2.0.406.11
 Humidity:65.0%
 Test Distance:8.000m [K=0.7063]
 Remarks:

UGR(Unified Glare Rating) Table

Test:U:24.000V I:0.1820A P:4.3000W PF:1.0000 Freq:0Hz Lamp Flux:339.657x1 lm		
NAME: 127-082	TYPE:LED	
MFR.: Tronix Lighting		

ceiling/cavity	0.7	0.7	0.5	0.5	0.3	0.7	0.7	0.5	0.5	0.3
walls	0.5	0.3	0.5	0.3	0.3	0.5	0.3	0.5	0.3	0.3
working plane	0.2	0.2	0.2	0.2	0.2	0.2	0.2	0.2	0.2	0.2
Room dimensions	Viewed crosswise					Viewed endwise				
x = 2H y = 2H	24.6	26.1	25.0	26.3	26.6	25.0	26.4	25.3	26.7	27.0
3H	25.6	27.0	26.0	27.2	27.6	26.1	27.4	26.4	27.7	28.0
4H	25.9	27.1	26.2	27.4	27.8	26.4	27.6	26.7	27.9	28.3
6H	26.0	27.2	26.4	27.5	27.9	26.5	27.7	26.9	28.0	28.4
8H	26.0	27.2	26.4	27.5	27.9	26.5	27.7	26.9	28.0	28.4
12H	26.0	27.1	26.4	27.5	27.9	26.6	27.7	27.0	28.0	28.4
4H 2H	25.1	26.4	25.5	26.7	27.0	25.4	26.7	25.8	27.0	27.3
3H	26.2	27.3	26.6	27.7	28.0	26.6	27.7	27.0	28.0	28.4
4H	26.5	27.5	27.0	27.9	28.3	27.0	28.0	27.4	28.3	28.7
6H	26.7	27.6	27.2	28.0	28.5	27.2	28.1	27.6	28.5	28.9
8H	26.8	27.6	27.3	28.0	28.5	27.2	28.1	27.7	28.5	28.9
12H	26.8	27.6	27.3	28.0	28.5	27.3	28.1	27.8	28.5	29.0
8H 4H	26.6	27.4	27.1	27.9	28.3	27.0	27.8	27.5	28.3	28.7
6H	26.9	27.6	27.4	28.0	28.5	27.3	28.0	27.8	28.5	29.0
8H	27.0	27.6	27.5	28.1	28.6	27.4	28.0	28.0	28.5	29.0
12H	27.1	27.6	27.7	28.2	28.7	27.6	28.1	28.1	28.6	29.1
12H 4H	26.6	27.4	27.1	27.8	28.3	27.0	27.7	27.5	28.2	28.7
6H	26.9	27.5	27.4	28.0	28.5	27.3	27.9	27.8	28.4	28.9
8H	27.1	27.6	27.6	28.1	28.6	27.5	28.0	28.0	28.5	29.0
Variations with the observer position at spacings:										
S = 1.0H	+ 0.3 / - 0.3					+ 0.2 / - 0.3				
1.5H	+ 0.3 / - 0.5					+ 0.2 / - 0.4				
2.0H	+ 0.4 / - 0.4					+ 0.4 / - 0.5				

CIE Pub.117, 339.7 lm Total Lamp Luminous Flux Corrected (8log(F/F0) = -3.8)

C Range: 0 - 360DEG
 C Interval: 30.0DEG
 Test Speed: HIGH
 Temperature:25.3DEG
 Operators:DAMIN
 Test Date:2019-03-31

γ Range: 0 - 180DEG
 γ Interval: 1.0DEG
 Test System:EVERFINE GO-2000B_V1 SYSTEM V2.0.406.11
 Humidity:65.0%
 Test Distance:8.000m [K=0.7063]
 Remarks:

UTILIZATION FACTORS TABLE

Test:U:24.000V I:0.1820A P:4.3000W PF:1.0000 Freq:0Hz Lamp Flux:339.657x1 lm		
NAME: 127-082	TYPE:LED	
MFR.: Tronix Lighting		

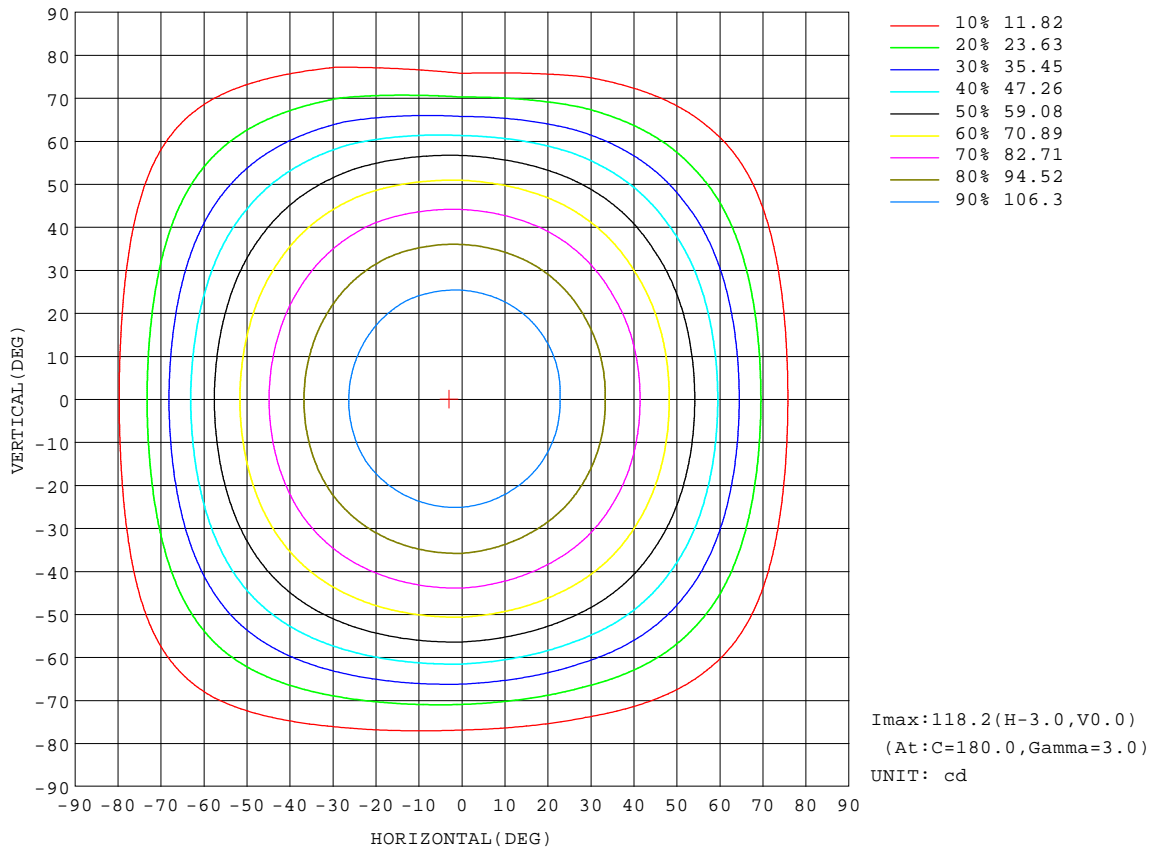
REFLECTANCE										
Ceiling	0.8	0.8	0.8	0.7	0.7	0.7	0.5	0.5	0.5	0
Walls	0.7	0.5	0.3	0.7	0.5	0.3	0.7	0.5	0.3	0
Working plane	0.2	0.2	0.2	0.2	0.2	0.2	0.2	0.2	0.2	0
ROOM INDEX	UTILIZATION FACTORS(PERCENT) $k(RI) \times RCR = 5$									
k = 0.60	57	46	39	56	45	39	55	45	38	32
0.80	67	56	49	66	55	48	64	54	48	41
1.00	76	65	58	75	64	58	72	65	57	50
1.25	83	73	66	81	72	65	79	70	64	57
1.50	88	78	72	86	77	71	83	75	70	62
2.00	95	87	80	93	85	79	89	83	77	69
2.50	99	91	85	96	90	84	92	86	82	73
3.00	102	95	90	100	93	89	95	90	86	77
4.00	106	100	96	103	98	94	98	94	91	81
5.00	108	103	99	105	101	98	100	97	94	84
ROOM INDEX	UF(total)									Direct
According to DIN EN 13032-2 2004			Suspended				SHRNM = 1.25			

C Range: 0 - 360DEG
C Interval: 30.0DEG
Test Speed: HIGH
Temperature:25.3DEG
Operators:DAMIN
Test Date:2019-03-31

γ Range: 0 - 180DEG
 γ Interval: 1.0DEG
Test System:EVERFINE GO-2000B_V1 SYSTEM V2.0.406.11
Humidity:65.0%
Test Distance:8.000m [K=0.7063]
Remarks:

ISOCANDELA DIAGRAM

Test:U:24.000V I:0.1820A P:4.3000W PF:1.0000 Freq:0Hz Lamp Flux:339.657x1 lm		
NAME: 127-082	TYPE:LED	
MFR.: Tronix Lighting		



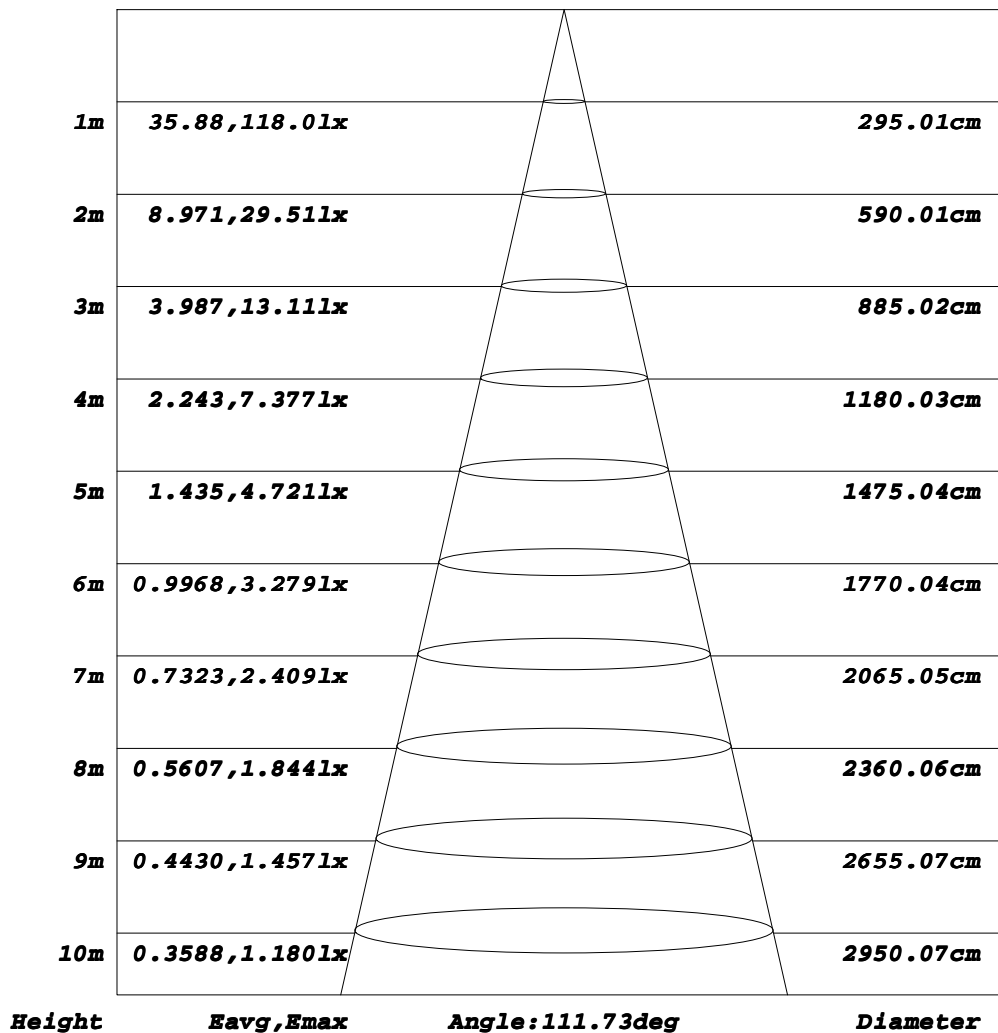
C Range: 0 - 360DEG
C Interval: 30.0DEG
Test Speed: HIGH
Temperature:25.3DEG
Operators:DAMIN
Test Date:2019-03-31

γ Range: 0 - 180DEG
γ Interval: 1.0DEG
Test System:EVERFINE GO-2000B_V1 SYSTEM V2.0.406.11
Humidity:65.0%
Test Distance:8.000m [K=0.7063]
Remarks:

AAI Figure

Test:U:24.000V I:0.1820A P:4.3000W PF:1.0000 Freq:0Hz Lamp Flux:339.657x1 lm		
NAME: 127-082	TYPE:LED	
MFR.: Tronix Lighting		

Flux out:247.8 lm



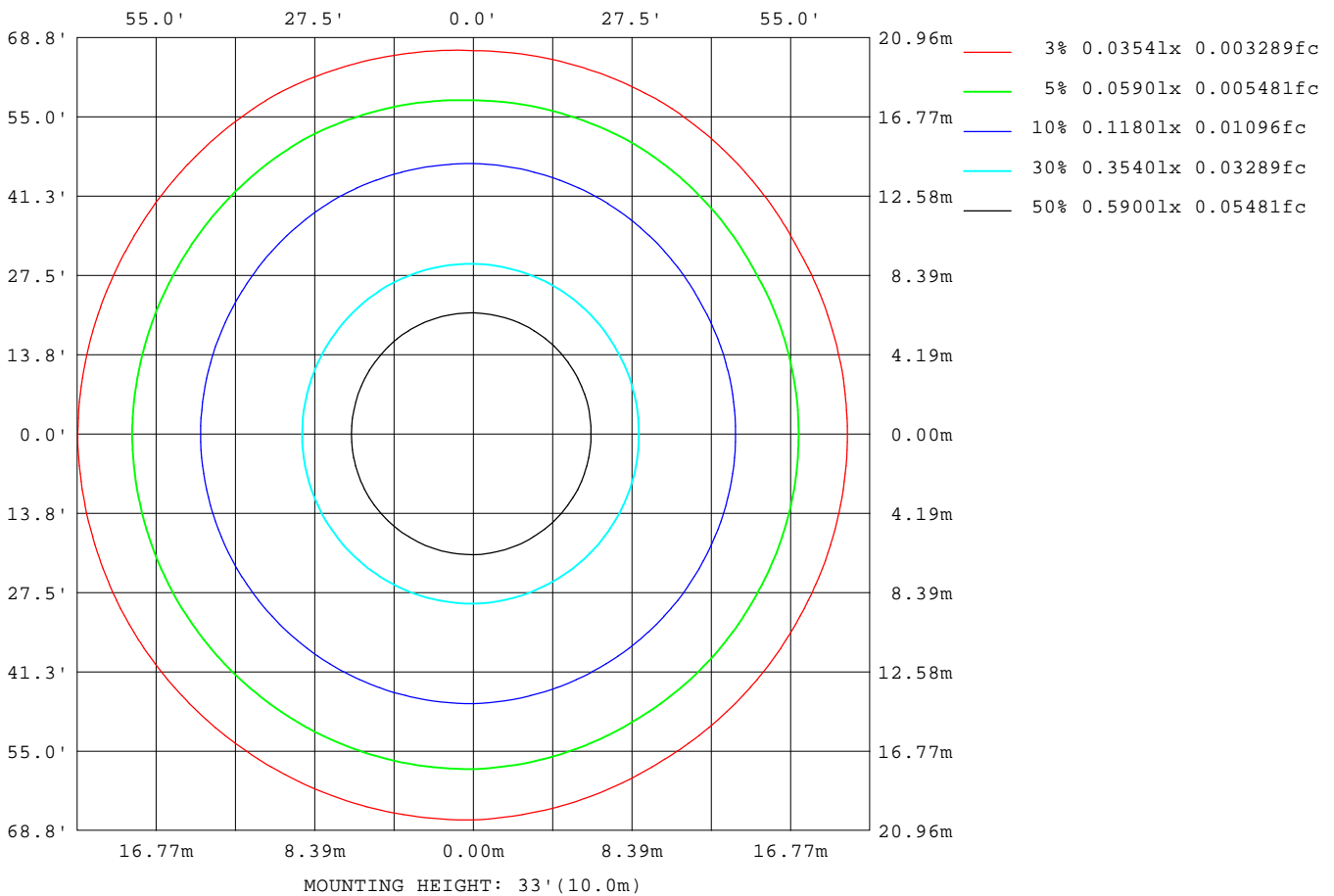
Note: The Curves indicate the illuminated area and the average illumination when the luminaire is at different distance.

C Range: 0 - 360DEG
C Interval: 30.0DEG
Test Speed: HIGH
Temperature: 25.3DEG
Operators: DAMIN
Test Date: 2019-03-31

γ Range: 0 - 180DEG
γ Interval: 1.0DEG
Test System: EVERFINE GO-2000B_V1 SYSTEM V2.0.406.11
Humidity: 65.0%
Test Distance: 8.000m [K=0.7063]
Remarks:

ISOLUX DIAGRAM

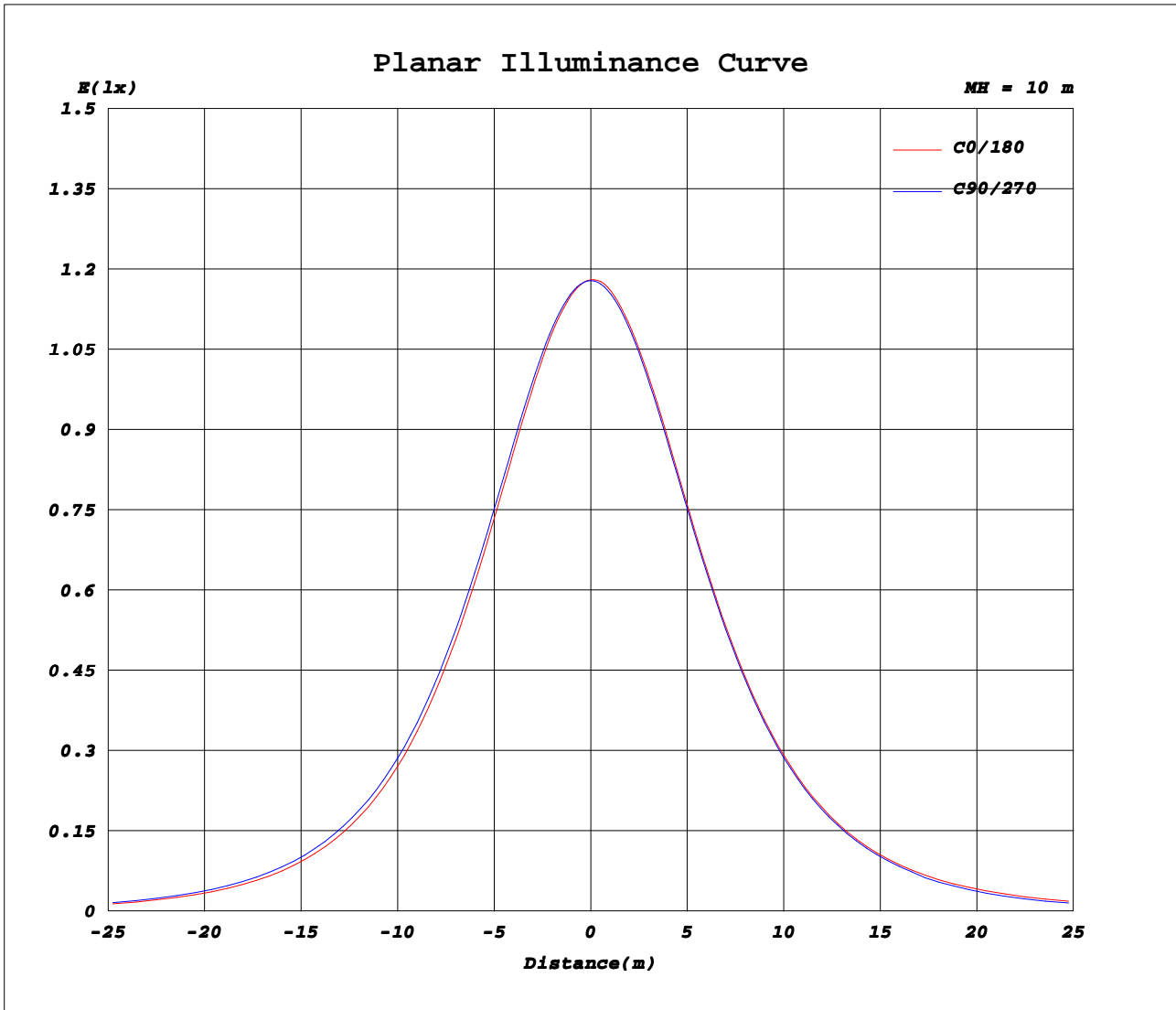
Test:U:24.000V I:0.1820A P:4.3000W PF:1.0000 Freq:0Hz Lamp Flux:339.657x1 lm		
NAME: 127-082	TYPE:LED	
MFR.: Tronix Lighting		



C Range: 0 - 360DEG
C Interval: 30.0DEG
Test Speed: HIGH
Temperature: 25.3DEG
Operators: DAMIN
Test Date: 2019-03-31

γ Range: 0 - 180DEG
γ Interval: 1.0DEG
Test System: EVERFINE GO-2000B_V1 SYSTEM V2.0.406.11
Humidity: 65.0%
Test Distance: 8.000m [K=0.7063]
Remarks:

Planar Illuminance Curve



C Range: 0 - 360DEG
C Interval: 30.0DEG
Test Speed: HIGH
Temperature: 25.3DEG
Operators: DAMIN
Test Date: 2019-03-31

γ Range: 0 - 180DEG
γ Interval: 1.0DEG
Test System: EVERFINE GO-2000B_V1 SYSTEM V2.0.406.11
Humidity: 65.0%
Test Distance: 8.000m [K=0.7063]
Remarks:

LUMINOUS DISTRIBUTION INTENSITY DATA

Test:U:24.000V I:0.1820A P:4.3000W PF:1.0000 Freq:0Hz Lamp Flux:339.657x1 lm		
NAME: 127-082	TYPE:LED	
MFR.: Tronix Lighting		

Table--1

UNIT: cd

C (DEG) \ γ (DEG)	0	30	60	90	120	150	180	210	240	270	300	330							
0	118	118	118	118	118	118	118	118	118	118	118	118							
5	117	117	117	117	118	118	118	118	118	117	117	117							
10	115	116	116	116	116	117	117	116	116	116	116	116							
15	112	113	113	114	114	115	115	114	114	114	113	113							
20	109	109	110	111	111	112	112	111	111	111	110	109							
25	104	105	105	106	107	108	108	107	107	107	106	105							
30	98.7	99.2	100	101	102	103	103	102	102	102	101	99.4							
35	92.3	92.8	93.9	95.6	96.2	96.9	96.8	96.6	96.8	95.8	94.6	92.9							
40	84.9	85.5	86.8	88.8	89.4	90.1	90.0	89.8	90.1	89.0	87.5	85.5							
45	76.6	77.2	78.7	81.0	81.6	82.3	82.5	82.1	82.5	81.2	79.6	77.1							
50	67.4	67.9	69.6	72.2	72.9	73.6	74.0	73.4	73.9	72.5	70.6	67.7							
55	57.3	57.5	59.4	62.2	63.1	63.9	64.4	63.7	64.1	62.6	60.3	57.2							
60	46.1	46.2	47.8	51.1	52.2	53.3	54.0	53.0	53.3	50.2	49.1	45.9							
65	34.2	34.0	35.4	38.6	40.2	41.9	42.9	41.7	41.6	37.5	36.9	34.1							
70	22.6	22.2	23.2	25.9	27.9	30.0	31.0	29.9	29.3	24.2	24.7	22.6							
75	13.0	12.8	13.4	15.1	16.9	19.0	19.9	19.2	18.3	13.2	14.6	13.2							
80	6.80	6.85	7.02	7.87	9.04	10.6	11.4	11.0	10.3	6.02	7.94	7.05							
85	3.61	3.67	3.73	3.79	4.68	5.53	6.10	5.87	5.41	2.24	4.17	3.79							
90	2.23	2.30	2.19	0.95	2.46	2.93	3.30	3.15	2.88	0.99	2.39	2.38							
95	1.90	1.88	1.58	0.79	1.60	1.99	2.27	2.23	1.90	0.96	1.70	1.96							
100	1.82	1.74	1.28	0.91	1.31	1.74	2.00	1.94	1.52	1.06	1.38	1.82							
105	1.77	1.65	1.16	1.04	1.18	1.64	1.92	1.82	1.32	1.17	1.27	1.73							
110	1.72	1.55	1.22	1.19	1.23	1.60	1.85	1.73	1.35	1.29	1.33	1.64							
115	1.66	1.54	1.34	1.33	1.34	1.59	1.82	1.70	1.45	1.41	1.44	1.62							
120	1.68	1.56	1.47	1.46	1.46	1.64	1.80	1.72	1.55	1.54	1.55	1.65							
125	1.72	1.65	1.59	1.59	1.60	1.73	1.83	1.79	1.66	1.65	1.66	1.73							
130	1.83	1.76	1.72	1.73	1.74	1.79	1.90	1.85	1.79	1.77	1.78	1.82							
135	1.93	1.89	1.85	1.86	1.87	1.88	1.94	1.92	1.90	1.89	1.89	1.93							
140	2.05	2.02	1.98	1.99	2.00	2.00	1.99	2.03	2.02	2.01	2.00	2.04							
145	2.17	2.14	2.10	2.12	2.13	2.13	2.10	2.13	2.14	2.13	2.12	2.15							
150	2.29	2.25	2.23	2.25	2.26	2.25	2.21	2.25	2.25	2.25	2.24	2.26							
155	2.40	2.37	2.35	2.37	2.37	2.37	2.33	2.35	2.37	2.37	2.35	2.36							
160	2.50	2.48	2.46	2.49	2.49	2.49	2.44	2.46	2.47	2.48	2.47	2.46							
165	2.59	2.56	2.56	2.58	2.59	2.58	2.53	2.54	2.56	2.57	2.56	2.55							
170	2.67	2.64	2.66	2.67	2.67	2.66	2.60	2.61	2.64	2.64	2.64	2.62							
175	2.73	2.71	2.71	2.73	2.74	2.73	2.67	2.67	2.69	2.70	2.70	2.68							
180	2.74	2.72	2.74	2.75	2.76	2.74	2.74	2.72	2.74	2.75	2.76	2.74							

C Range: 0 - 360DEG
C Interval: 30.0DEG
Test Speed: HIGH
Temperature: 25.3DEG
Operators: DAMIN
Test Date: 2019-03-31

γ Range: 0 - 180DEG
γ Interval: 1.0DEG
Test System: EVERFINE GO-2000B_V1 SYSTEM V2.0.406.11
Humidity: 65.0%
Test Distance: 8.000m [K=0.7063]
Remarks: