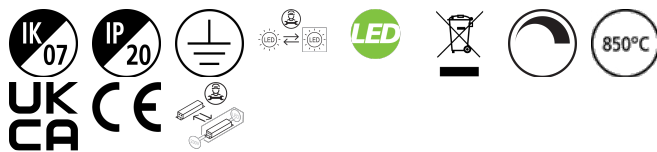
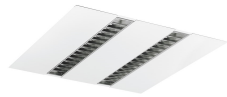


RANA NEO Recessed 600 SylSmart

RANA NEO 3500LM REC 600x600 840 SSC 2L WHITE
0052581



PRODUCT OVERVIEW

Product name	RANA NEO 3500LM REC 600x600 840 SSC 2L WHITE
Technology	LED (3 SDCM)
Cap/Base	N/A
Housing	Steel
Mount	Ceiling recessed mounting
Warranty	5 years
Fixture luminous flux (lm)	3527
Luminaire efficacy (lm/W)	113
Colour temperature (K)	4000
Light colour	Neutral White
CRI (Ra)	80
Colour Variation Initial (SDCM)	SDCM3
Glare control	< 15
Photobiological Risk Group	RG0
Total power consumption (W)	31
Electrical protection	Class I
Control gear type	LED driver constant current
LED Flickering Rate	Ultra low (5% or less)
Housing colour	RAL 9016 - Traffic white / Bezel
IP rating	IP20
IK rating	IK07
Product EAN number	5410288525815

DATA TABLE

General data

Product name	RANA NEO 3500LM REC 600x600 840 SSC 2L WHITE
Technology	LED (3 SDCM)
Cap/Base	N/A
Housing	Steel
Mount	Ceiling recessed mounting
Operating temperature range (°C)	-5°C...+25°C

RANA NEO Recessed 600 SylSmart

RANA NEO 3500LM REC 600x600 840 SSC 2L WHITE
0052581

Performance ambient temperature Tq (°C)	25
Warranty	5 years

Optical data

Fixture luminous flux (lm)	3527
Luminaire efficacy (lm/W)	113
Colour temperature (K)	4000
Light colour	Neutral White
CRI (Ra)	80
Colour Variation Initial (SDCM)	SDCM3
Glare control	< 15
Photobiological Risk Group	RG0

Electrical data

Total power consumption (W)	31
Primary Supply/Product voltage - min (V)	220
Lamp power factor	0.95
Electrical protection	Class I
Control gear type	LED driver constant current
Drive current (mA)	600
Inrush Current (A)	20
Inrush Duration (µs)	25
Glow Wire Test (°C)	850
Energy Efficiency Class (A->G) of contained light source	C
Nominal Frequency (Hz)	50/60Hz
LED Flickering Rate	Ultra low (5% or less)
Max. products per 10A C Breaker	57
Max. products per 20A B Breaker	68

Lifetime data

Lifespan L70 B50	100000
Lifespan L80 B20	96000

Physical data

Housing colour	RAL 9016 - Traffic white / Bezel
IP rating	IP20
IK rating	IK07
Diffuser finish	Matt/satinized
Diffuser material	PC Polycarbonate
Nominal Product Length (mm)	595
Nominal Product Width (mm)	595
Weight (kg)	4.5

Packaging

Single packaging type	Carton
Product EAN number	5410288525815
Packaging single width (cm)	6.5

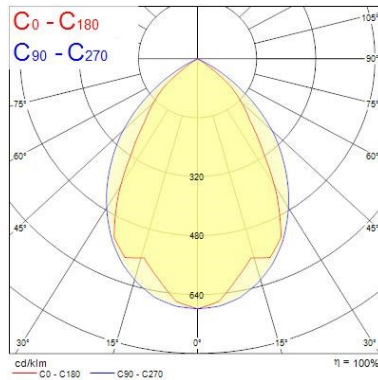
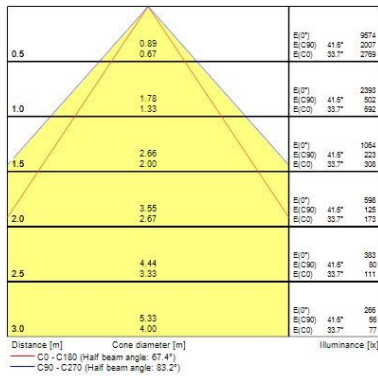
RANA NEO Recessed 600 SylSmart RANA NEO 3500LM REC 600x600 840 SSC 2L WHITE 0052581

Packaging single depth (cm)	65.0
DUN14 (outer)	05410288525815
Packaging outer length / height (cm)	62.0

Safety data

Optimal operating condition (°C)	-5-25
----------------------------------	-------

PHOTOMETRY



TECHNICAL DRAWINGS

