

LULU Single-lever bath mixer for wall mounting without shower set - Chrome



LULU

33 200 710 Product version from 3/31/2009 to 3/19/2019

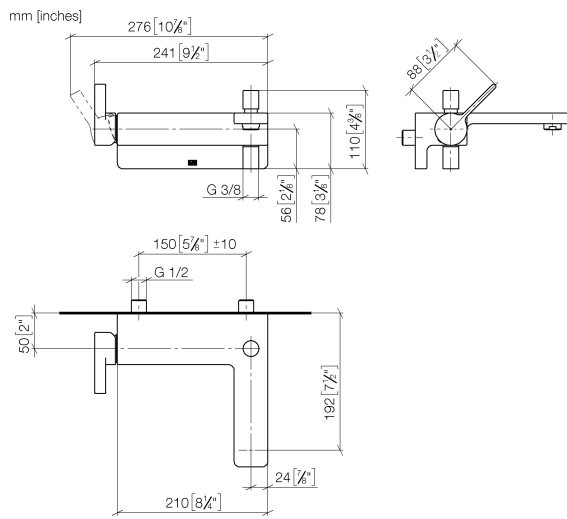


- 190mm projection
- circular normal flow
- automatic bath/shower diverter
- 3/8" shower outlet
- 1/2" connection
- gauge 150 mm - 10 mm
- max. flow 17.8 l/min at 3 bar flow pressure

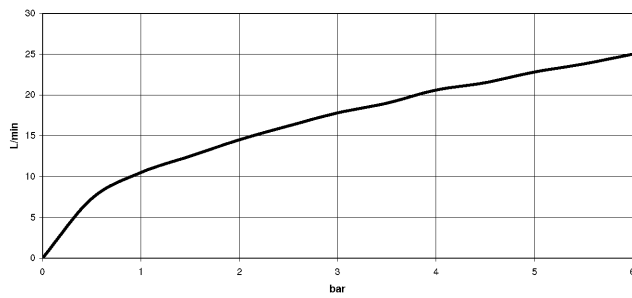
Intrinsic protection against back flow.

	Chrome	33 200 710-00
	Brushed Platinum	33 200 710-06

33 200 710 Product version from 3/31/2009 to 3/19/2019



Flow rate chart



Codes & Standards

DIN 4109

EN 1717

ISO 3822

Ü-Zeichen



LULU Single-lever bath mixer for wall mounting without shower set - Chrome

LULU

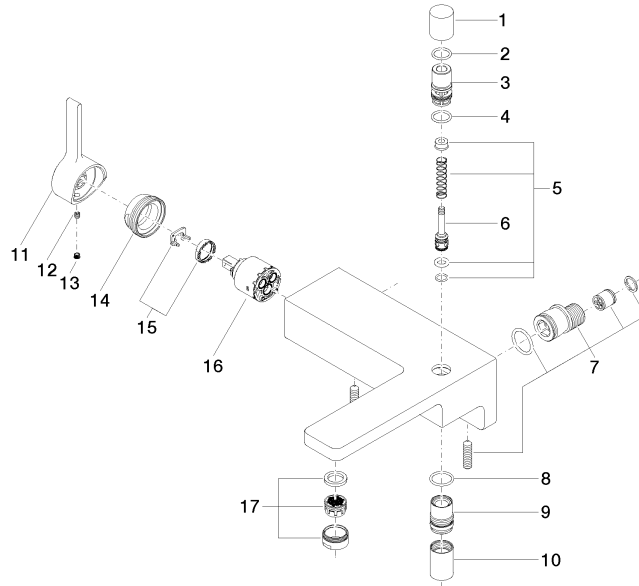
33 200 710 Product version from 3/31/2009 to 3/19/2019

Certificates and sustainability

LGA_9	Belgaqua_21-376-2	EPD-DOR-20230287 -IBA1-EN Environmental.prod uct-declarat
-------	-------------------	--

33 200 710 Product version from 3/31/2009 to 3/19/2019

Parts for other finishes can be found here: Brushed Platinum



Spare parts list

No.	Item Number	Name	Quantity used	Delivery time
12	90 31 11 030 00 90	Mounting Threaded pin with hexagon socket with cup point M5 x 5 mm -	1.00	14
17	90 23 01 118 00-00	Aerator M24x1-AG - Chrome	1.00	20
15	90 28 10 148 00 90	Temperature limitation ring -	1.00	14
8	09 14 10 122 90	O-Ring EPDM 70 18,6 x 2,0 mm -	1.00	14
9	09 24 03 129-00	Nipple Ø 22 x 31,1 mm - Chrome	1.00	20
10	90 21 02 069 00-00	Cover/sleeve M20 x 1 - Chrome	1.00	20
5	90 16 02 023 00 90	Diverter Repair kit, bath deck mounting 15 x 50 x 15 mm -	1.00	14
1	09 20 71 031-00	Pull button for pop-up waste - Chrome	1.00	20
16	90 15 05 064 00 90	Single-lever mixer cartridge Ø 35 mm x 58,6 mm -	1.00	-
Spare part can no longer be ordered, please order the replacement item 9015050460090 Single-lever mixer cartridge Ø 35 mm x 58,6 mm -				
6	09 31 09 094 20-00	Pull rod for diverter Ø 12 x 46 mm - Chrome	1.00	20
13	90 31 20 109 00 90	Plug -	1.00	14
7	90 11 04 042 00 90	Connection -	2.00	14
2	90 14 10 033 00 90	O-Ring EPDM 70 14,5 x 2,0 mm -	1.00	14
14	09 24 04 141-00	Mounting Ø 40 x 18 mm - Chrome	1.00	20
3	09 21 34 080-00	Diverter Ø 19,40 x 37 mm - Chrome	1.00	20
4	90 14 10 055 00 90	O-Ring EPDM 70 15,0 x 2,0 mm -	1.00	14
11	09 20 71 001-00	Handle Lever 46 x 29 x 111 mm - Chrome	1.00	20