

28 689 970 Product version from 3/13/2017



- rain shower Ø 300 mm
- Rain shower material: metal
- PURE RAIN, max. flow rate 14 l/min (at 3 bar)
- Function from: 10 l/min
- quick clearing
- with anti-scale system

**technical data:**

- rosette Ø 60 mm optional
- 1/2" connection

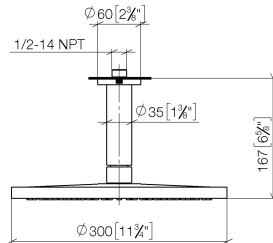
**Notes:**

Recommended miscellaneous

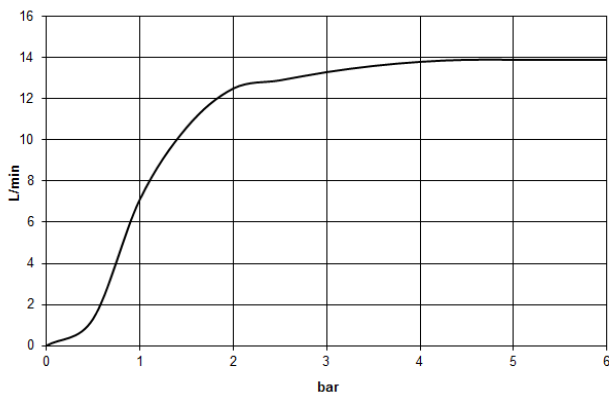
- 
- |   |  |
|---|--|
|  | <p><b>Concealed wall elbow -</b> 35 085 970 90</p> <ul style="list-style-type: none"> <li>• min. recess depth 90 mm</li> <li>• max. recess depth 163 mm</li> </ul> |
|---|--|

28 689 970 Product version from 3/13/2017

mm [inches]



Flow rate chart



Codes & Standards

DIN 4109

EN 1112

ISO 3822

Scottish Water  
Byelaws

UK Water Supply  
Regulations

Ü-Zeichen



## Rainshower with ceiling fixing 300 mm - Brushed Durabron (23kt Gold)

SERIES SPECIFIC

28 689 970 Product version from 3/13/2017

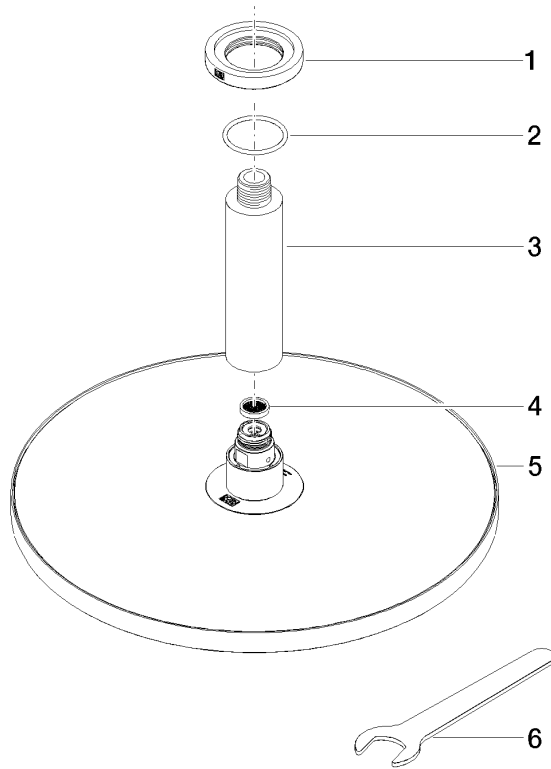
### Certificates and sustainability

LGA\_29

LGA\_29

DVGW\_DW-  
6517DN0

WRAS\_2212



Spare parts list

No.	Item Number	Name	Quantity used	Delivery time
1	09 27 22 040-28	Rosette Ø 60 x Ø 35 x 9 mm - Brushed Durabron (23kt Gold)	1.00	40
4	09 23 01 075 90	Sieve seal Ø 18 x 3,5 mm -	1.00	14
6	90 30 09 069 00 90	Spanner -	1.00	14
2	09 14 10 141 90	O-Ring NBR 70 34,59 x 2,62 mm -	1.00	14
3	09 11 03 080-28	Connection Ø 35 x 135 mm - Brushed Durabron (23kt Gold)	1.00	40
5	04 12 05 091 00-28	Rainshower round Ø 300 mm - Brushed Durabron (23kt Gold)	1.00	40