

173-053 3000K specific configuration

LED panel | 30\*120 | 36W | 3-CCT | UGR19 | 2m cable EU plug

## Introduction

### Purpose of this Document

This document provides information for 173-053 3000K. During measurement, the product is used in a different mode where output power, colour temperature and/or beam angle are changed from factory standard. These adjustments can be made without altering the product and are designed to be set by the installer. In most cases, the options are set through switches on the product.

### Results

Total input power	35.0 W
Correlated Colour Temperature	3080 K
Total lumen output	3680 lm
Efficiency	105 lm/W

## Electrical measurement details

### Input Power

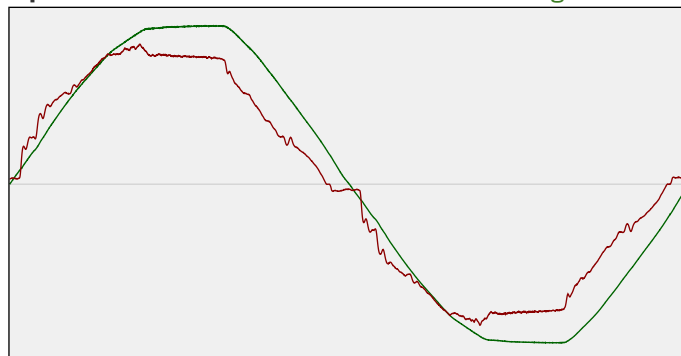
RMS Input voltage feed. $V_{RMS}$	230 V
RMS Input current feed. $I_{RMS}$	0.156 A
Total input power	35.0 W

Frequency of input power	50 Hz
Power factor	0.98
Displacement power factor	0.98

Total harmonic distortion of the current	7.98%
Total harmonic distortion of the voltage	2.65%

### Input Power Curve

Voltage - Current



### Efficiency

Radiated power efficiency: 30.4%



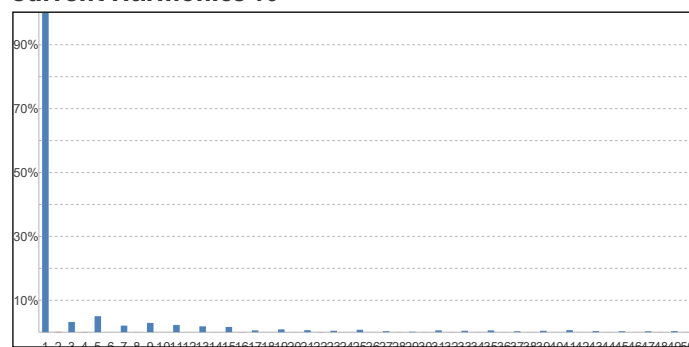
Lumen efficiency: 105 lm/W



### Harmonics

3rd Harmonic	3.2%
5th Harmonic	5.01%
7th Harmonic	2.05%
9th Harmonic	2.9%
11th Harmonic	2.28%

### Current Harmonics %



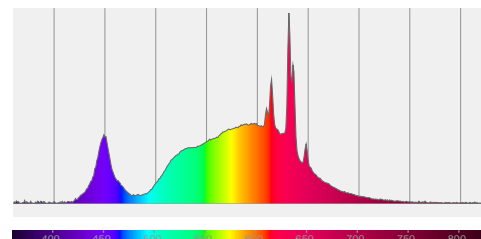
## 173-053 3000K specific configuration

### Colour measurement details

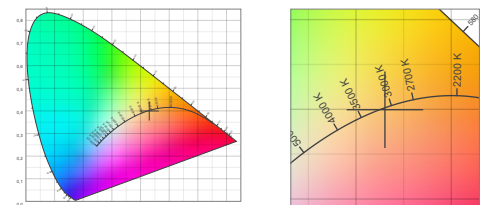
Total lumen output 3680 lm  
 Correlated Colour Temperature 3080 K  
 Colour coordinates CIE 1931 (x;y) = (0.430;0.400)  
 Colour deviation from BBL Duv = -0.0009

TM30-18 Colour Fidelity Index  $R_f$  81.1  
 TM30-18 Colour Gamut Index  $R_g$  101.7  
 Colour Rendering Index (Ra) CRI 83.0  
 Colour Rendering Index. (red component)  $R_9 = 27.7$

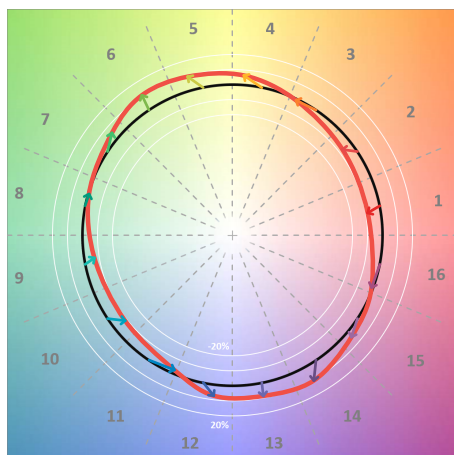
Colour Quality Scale CQS = 80.4  
 Television Lighting Consistency Index TLCI = 63



Relative spectral power distribution



### TM30 details

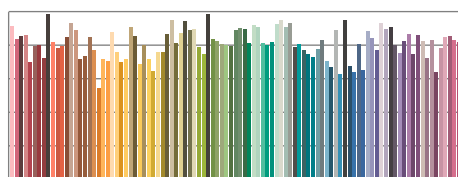


TM30 Colour vectors per hue bin

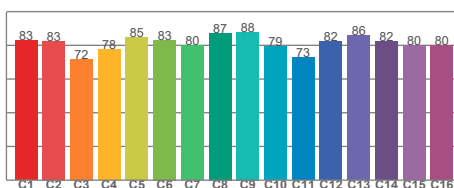


TM30 Colour distortion

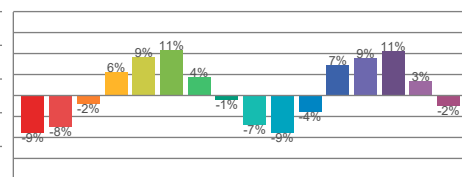
Hue Bin	$R_f$	Shifts (%)	
		Chroma	Hue
C1	83	-9%	-3%
C2	83	-8%	7%
C3	72	-2%	15%
C4	78	6%	13%
C5	85	9%	9%
C6	83	11%	-2%
C7	80	4%	-12%
C8	87	-1%	-8%
C9	88	-7%	-3%
C10	79	-9%	8%
C11	73	-4%	18%
C12	82	7%	9%
C13	86	9%	-1%
C14	82	11%	-9%
C15	80	3%	-12%
C16	80	-2%	-16%



TM30-18  $R_f$ -values per reference colour

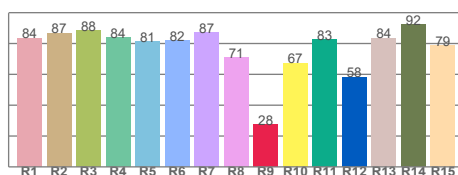


TM30-18  $R_f$ -values per hue bin

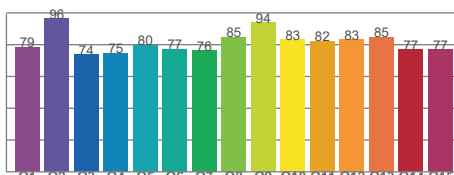


TM30 Chroma shift

### Colour Quality details



Colour Rendering Index



Colour Quality Scale