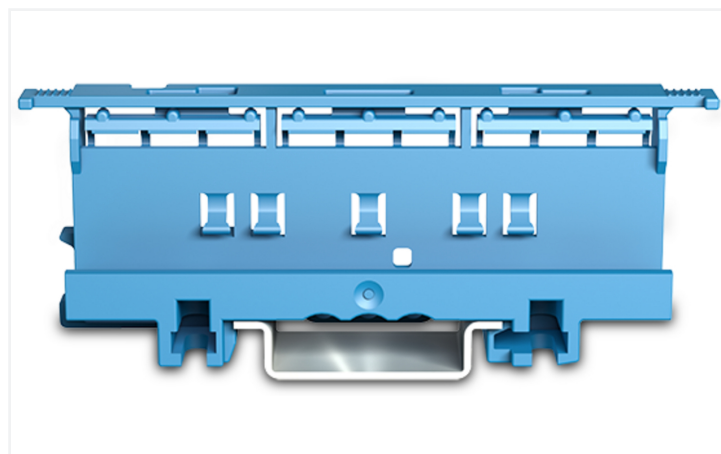
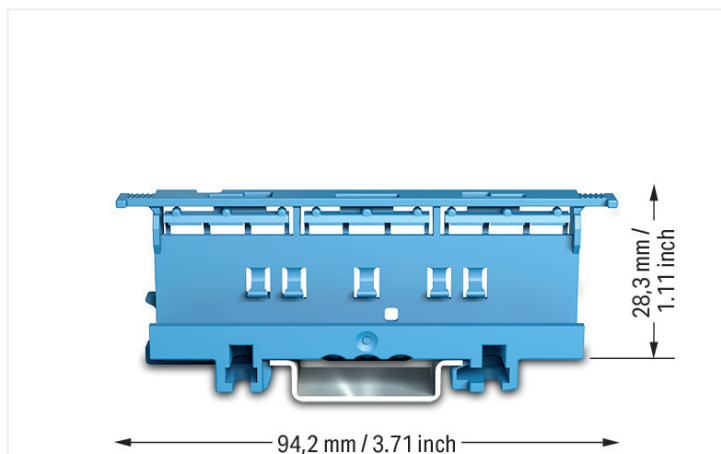


Data Sheet | Item Number: 221-510/000-006

Mounting carrier; 221 Series - 6 mm²; for DIN-35 rail mounting/screw mounting;
blue

<https://www.wago.com/221-510/000-006>



Color: ■ blue

Physical data

Width	19.3 mm / 0.76 inches
Height	94.2 mm / 3.709 inches
Depth from upper-edge of DIN-rail	28.3 mm / 1.114 inches

Mechanical data

Mounting type	DIN-35 rail Screw mount
Suitable	for 2-, 3- and 5-conductor 221 Series Splicing Connectors (6 mm ²)

Material data

Note (material data)	Information on material specifications can be found here
Color	blue
Material group	I
Insulation material (main housing)	Polyamide (PA66)
Flammability class per UL94	V0
Fire load	0.365 MJ
Weight	12.2 g

Commercial data

PU (SPU)	50 (10) pcs
Packaging type	Box
Country of origin	CN
GTIN	4055143833554
Customs tariff number	39269097900

Product Classification	
UNSPSC	39121702
ETIM 9.0	EC002848
ETIM 10.0	EC002848
ECCN	NO US CLASSIFICATION

Environmental Product Compliance	
RoHS Compliance Status	Compliant, No Exemption

Downloads

Environmental Product Compliance

Compliance Search	
Environmental Product Compliance 221-510/000-006	↓

Documentation

Bid Text		
221-510/000-006	xml 3.16 KB	↓
221-510/000-006	docx 30.26 KB	↓

CAD/CAE-Data

CAD data	
2D/3D Models 221-510/000-006	↓

CAE data	
ZUKEN Portal 221-510/000-006	↓

1 Compatible Products

1.1 Optional Accessories

1.1.1 Marking

1.1.1.1 Marking strip



Item No.: 210-833
 Marking strips; 25 m on roll; 6 mm wide; plain; Self-adhesive; white

1.1.2 Mounting adapter

1.1.2.1 Mounting accessories



Item No.: 222-510

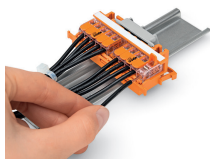
Angled DIN-rail adapter; in combination with mounting carrier; 221-500 or 222-500; for DIN-35 rail mounting; gray

Item No.: 222-505

Strain relief plate; for mounting carrier; 221 or 222 Series, can be snapped

Installation Notes

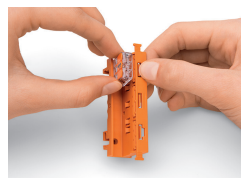
Conductor termination



CAGE CLAMP® connection:

Conductor termination with connectors fitted in a mounting carrier

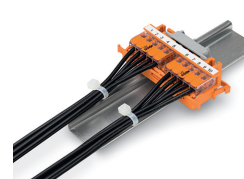
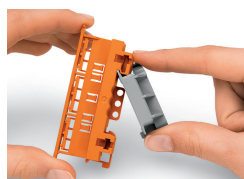
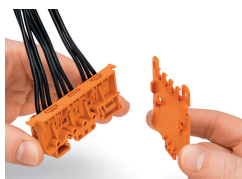
Removing a conductor.



Inserting a connector into the mounting carrier.

Inserting a connector into the mounting carrier.

Removing a connector from the mounting carrier.

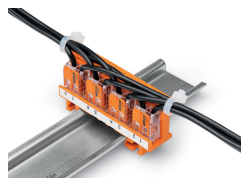
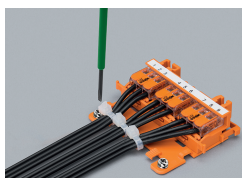


Securing a strain relief plate (222-505) to the mounting carrier.

Snapping the angled DIN-rail adapter (222-510) onto the mounting carrier.

Horizontal mounting on DIN-35 rail using an angled DIN-rail adapter

Horizontal mounting on DIN-35 rail using an angled DIN-rail adapter

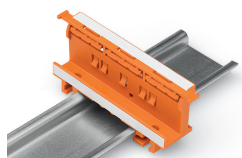


Horizontal screw mounting with strain relief plate on a flat surface

Vertical mounting with strain relief plate on DIN-35 rail

Strain relief via cable ties on the mounting carrier (transverse to the connectors' wiring direction) – clamping units labeled via marking strips (210-334)

Vertical screw mounting with strain relief plate on a flat surface



Mounting carrier on a DIN-35 rail

Testing



Testing connectors via test slots on top of the carrier.