

# SensoWash<sup>®</sup> Starck f

---

安装说明

**Mounting instructions**

电子坐便器

Shower toilet unit

# 612001 01 2 .. 2310

# 612001 01 2 .1 2310

# 612000 01 2 .. 2320

# 612000 01 2 .1 2320





重要说明



电气安装/水管安装

4

Important information

Electrical installation/water installation

8

zh  
en



安装, Installation

12






## 关于安装说明

此安装说明是Duravit产品的一部分，安装前请仔细阅读。

### 目标读者和安装人员资格

本产品及相关水管只能由有资质的管道工安装。电气安装只能由有资质的电工进行。

### 关于警示词与符号的说明

 <b>危险</b>	表示如不可避免将会导致死亡或严重伤害的危险情况。
 <b>警告</b>	表示如不可避免可能会导致死亡或严重伤害的危险情况。
 <b>注意</b>	表示如不可避免可能会导致轻微或中度伤害的危险情况。
<b>公告</b>	用于表示与身体伤害无关的操作实践。



请参阅章节电气安装



请参阅本章节中的安装说明



请参阅其他说明



请参阅章节水管安装



要求视检（例如，检查划痕）



请勿弯曲软管



检查是否有泄漏和密封性是否良好

## 安全说明

致命的触电风险！

- > 本产品必须正确接地。本产品未正确接地时，请勿操作。
- > 禁止拆卸单独零部件。
- > 请仅将本产品连接至指定电源。
- > 切勿用湿手触摸电源电缆。
- > 在处理电气部件时，请断开电源。
- > 如果电源线损坏，为了避免危险，必须由制造商、其维修部或类似部门的专业人员更换。
- > 固定布线电缆规格为导线标称横截面积1 – 2.5 mm<sup>2</sup> (17 – 14 AWG)。

产品和/或财产损失

- > 请勿将产品安装到湿气过重的房间内。确保空气充分流通，避免电气部件短路。
- > 请仅使用安装套装中的部件，以免出现功能失常现象。
- > 请勿使用Duravit未推荐您使用的附件。

水冻结

如果房间温度太低，会对产品造成损坏。

- > 请勿将本产品安装在可能结霜的房间内。室内温度不能低于 4 °C (39 °C)。

冷凝

产品如果从寒冷的地方移动到温暖的地方时，可能会发生冷凝，并对产品造成损坏。

- > 将本体从低温环境移入温度较高的环境时，请将其关闭数小时。

标准和规章条例

违反当地和所在国家/地区的规章条例和标准可能会对产品和/或财产造成损坏。

- > 请务必遵守低电压指令、所在国家/地区的标准和当地安装规章条例。

## 安装说明

请在安装前阅读预安装信息表。您可以通过互联网访问 [www.pro.duravit.com](http://www.pro.duravit.com)，下载这些信息表。

如需观看Starck f壁挂式座便器的安装视频，请访问[www.duravit.cn/mnt\\_sensowash\\_starck\\_f\\_cn](http://www.duravit.cn/mnt_sensowash_starck_f_cn)。



只需使用此二维码即可

Starck f 连体式冲水座便器的安装方式与视频中所示的安装方式不同（请参阅连体式冲水座便器安装说明）。

### 2 连接软管

- > 请使用壁挂式座便器安装套装中存放的软管。

### 4 + 22 选择和安装装配夹

- 交付物品中包含两个装配夹。
- > 根据电缆直径选择装配夹。

### 9 - 10 利用冲水面板安装界面（可选）

- > 使用DuraSystem® A2冲水面板安装功能界面套装。

### 45 + 59 测试

- > 接通电源和水源。
- > 参阅操作说明，确认本产品可以正常运行。

### 53 安装防盗保护

- > 如需将遥控器永久固定在壁架上，请前往第55步。



zh



额定电压	220 – 240 V 50 – 60 Hz
额定功率	1080 W
断路器	$I_N = 16 \text{ A}$
漏电保护器 (RCD)	$I_N = 30 \text{ mA}$
防水等级	IP X4
防护等级	I



冷水	DN15 (½ ")
适合水压	0.07 – 0.75 MPa (10 – 109 psi)
水的硬度	最大为 2.4 mmol/l (240 ppm)

#### 预安装

- > 根据座便器的技术图纸安装电气连接。



**危险**

致命的触电风险

- > 在安装之前，请先将电气部件与电源断开。
- > 检查所有部件是否断电。
- > 防止电源被第三方不小心接通。
- > 请确保电源电缆无损坏。
- > 安装一条固定供电线路（该线路必须在单独的电路中）：
  - > 查看电气连接位置
  - > 外面至少留出**800 mm (31½")** 的给电电缆
- > 安装断路器
  - > 如本产品自身不带漏电保护功能，应安装在有漏电保护器的路线中。
  - > 固定布线必须按布线规则配有触点开距可在过电压等级III条件下实现全极断开的装置。

#### 6 + 24 连接电缆

- > 从电源线上剥除约**10 mm (¾")** 的绝缘层。
- > 将3股电线连接到接线端子上。查看 L、N 和 PE 导线。
- > 确认给电电缆接地端比火线 (L) 和零线 (N) 长**10 mm (¾")**。

#### 预安装

- > 根据座便器的技术图纸安装进水管和出水管。



**警告**

健康风险和可能的产品损坏！

- > 本产品的自来水应只从主供水管道连接。
- > 请勿连通任何废水、混水、工业水、海水或其他未处理或半处理的水。

公告

水垢会损坏产品

在硬水地区，水垢的形成可能会影响产品的性能。

- > 检查您所在地区的水质。如果水的硬度  $\geq 14^\circ \text{dH}$  (2.5 mmol/l)，Duravit建议安装软水器。





## About the mounting instructions

These mounting instructions come as part of the Duravit product and should be read carefully prior to installation.

## Target readership and qualifications

The product and associated water connection should only be installed by qualified plumbers. The electrical installation should only be carried out by qualified electricians.

## Explanation of the signal words and symbols

	Indicates a hazardous situation which, if not avoided, will result in death or serious injury.
	Indicates a hazardous situation which, if not avoided, could result in death or serious injury.
	Indicates a hazardous situation which, if not avoided, could result in minor or moderate injury.
	Is used to address practices not related to physical injury.



Link to the **Electrical Installation** section



Link to the **installation information** in this section



Link to other **instructions**



Link to the **Water Installation** section



Inspection (e.g. for scratches)



Do not kink hose



Check for leaks and leak-tightness

## Safety instructions

### Risk of fatal electric shock!

- > The product has to be correctly earthed. Do NOT operate the product without proper grounding.
- > Do NOT remove individual components.
- > Connect the product only to the specified power supply.
- > NEVER touch the power supply cable with wet hands.
- > When working on electric components, disconnect the power supply.
- > If the supply cord is damaged, it must be replaced by the manufacturer, its service agent or similarly qualified persons in order to avoid a hazard.
- > Wire specification of cable is cross section 1-2.5 mm<sup>2</sup> (17-14 AWG).

### Product and/or property damage

- > Do NOT install the product in a room exposed to excessive moisture. Ensure sufficient ventilation to avoid condensation in electric components.
- > Only use the parts in the installation kit to avoid malfunctions.
- > Do NOT use attachments not recommended by Duravit.

### Freezing water

If the room temperature is too low, this can cause damage to the product.

- > Do NOT install the product in rooms where there is a danger of frost. The room temperature must not be less than 4 °C (39 °F).

### Condensation

Condensation may occur when moving from a cold location to a warm location and can cause damage to the product.

- > Leave the unit switched off for a few hours if it has been moved from a cold location to a warm location.

### Standards and regulations

The breach of local and country-specific regulations and standards can cause damage to the product and/or property damage.

- > Local installation regulations, country-specific standards and the Low Voltage Directives shall be observed at all times.



## Mounting instructions

Please read the pre-installation information sheets prior to the installation. These are available to download on the Internet at [www.pro.duravit.com](http://www.pro.duravit.com).

An installation video of the Starck f wall-mounted WC is available at [www.duravit.cn/mnt\\_sensowash\\_starck\\_f\\_cn](http://www.duravit.cn/mnt_sensowash_starck_f_cn).



Simply use this QR code

The installation of the Starck f One-piece water toilet differs from the installation shown in the video (see installation instructions One-piece water toilet).

### 2 Connecting the hose

- > Use the hose stored from the installation of the wall-mounted toilet.

### 4 + 22 Choosing and installing mounting clip

The delivery contains two mounting clips.

- > Choose clip according to cable diameter.

### 9 - 10 Installing interface with actuator plate (optional)

- > Install Interface Set for functional interface with DuraSystem® actuator plate A2.

### 45 + 59 Testing

- > Connect the power and water supply.
- > Confirm that the product functions properly according to the operating instructions.

### 53 Install anti-theft protection

- > To fix the remote control permanently to the wall holder go to step 55.



Rated voltage	220 – 240 V 50 – 60 Hz
Rated power	1080 W
Circuit breaker	$I_N = 16$ A
RCD	$I_N = 30$ mA
Protection degree	IP X4
Protection class	I



Cold water	DN15 (½ ")
Water pressure	0.07 – 0.75 MPa (10 – 109 psi)
Water hardness	max. 2.4 mmol/l (240 ppm)

### Pre-installation

- > Install electrical connection according to the technical drawing of the toilet.



**DANGER**

#### Risk of fatal electric shock

- > Disconnect electrical components from the power supply before the installation.
- > Check that all components are de-energised.
- > Prevent the power supply line from being switched on accidentally by third parties.
- > Ensure that there is no damage to the power supply cable.
  
- > Lay a permanent power supply line which must be on a separate circuit:
  - > Observe the position of the electrical connection
  - > Leave at least 800 mm (31½ ") of feed cable exposed
- > Install circuit breaker
  - > If the product itself does not have electrical leakage protection function, it must be installed in circuit where there is leakage protection device installed.
  - > Means for disconnection must be incorporated in the fixed wiring in accordance with the wiring rules and having a contact separation in all poles that provide full disconnection under overvoltage category III conditions.

### 6 + 24 Connecting the cable

- > Remove the insulation from the wires approximately 10 mm (¾ ").
- > Connect the 3 wires to the terminal block. Observe the L, N and PE conductors.
- > Confirm that the grounding wire is 10 mm (¾ ") longer than the L and N wire.

### Pre-installation

- > Install water connection and water outlet according to the technical drawing of the toilet.



**WARNING**

#### Health risk and potential product damage!

- > Supply the product with tap water from the main water system only.
- > Do not connect any waste water, grey water, industrial water, sea water or other untreated or semi-treated water.

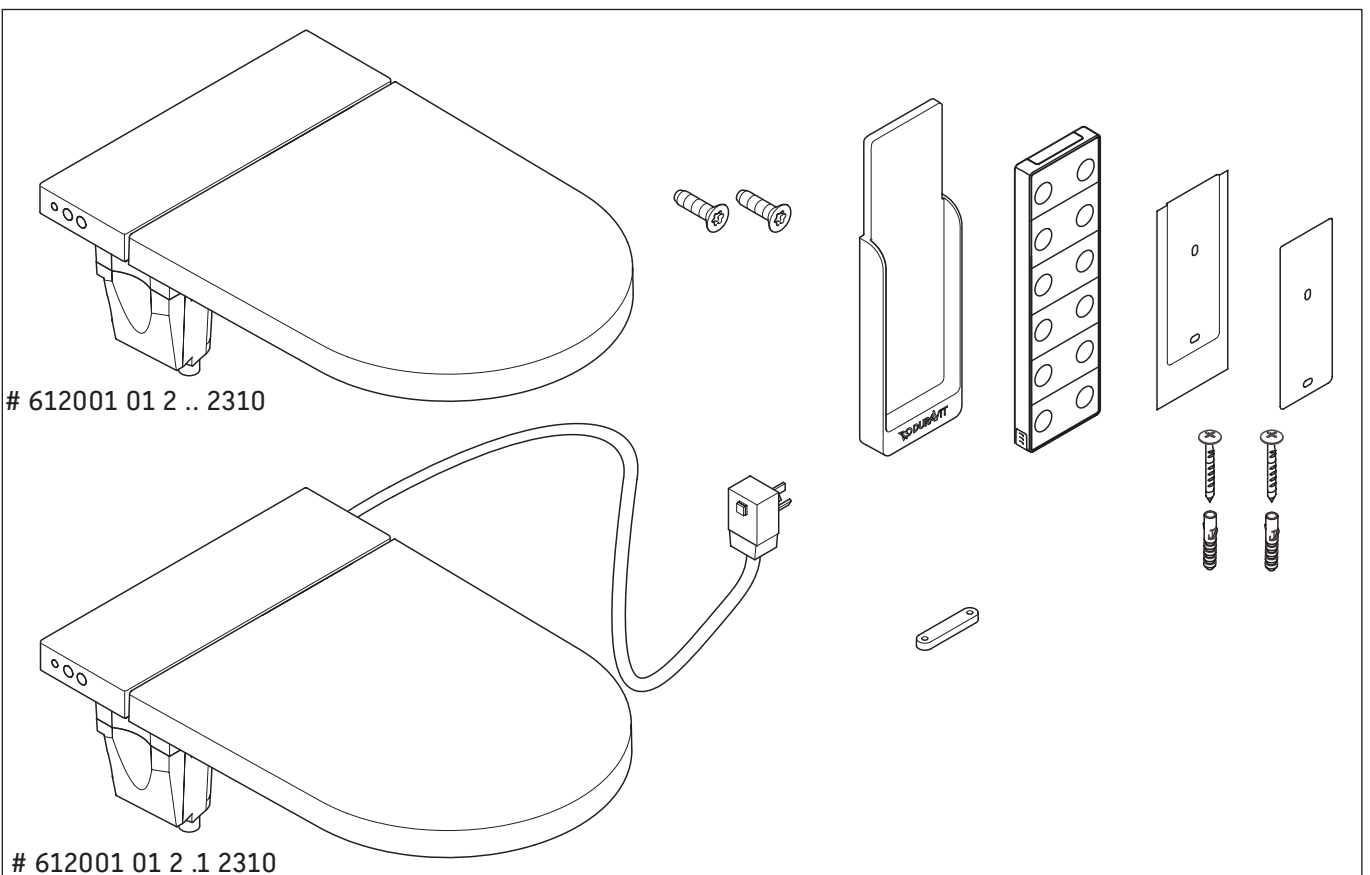
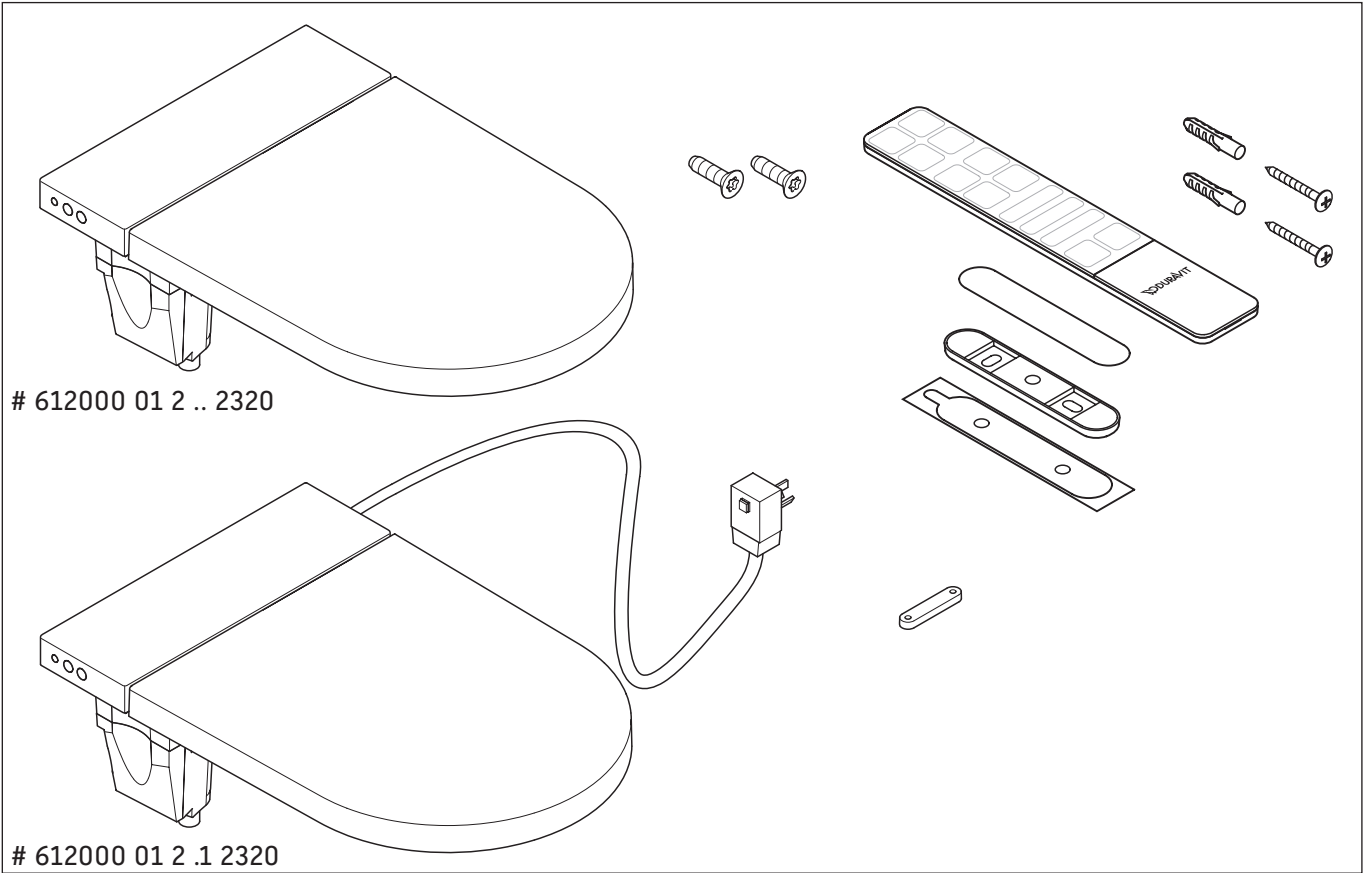
**NOTICE**

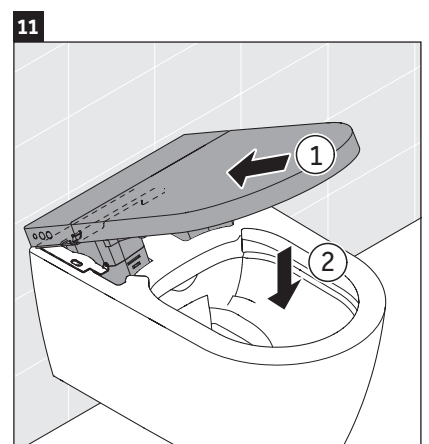
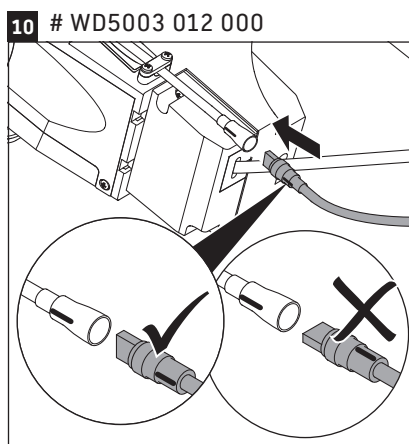
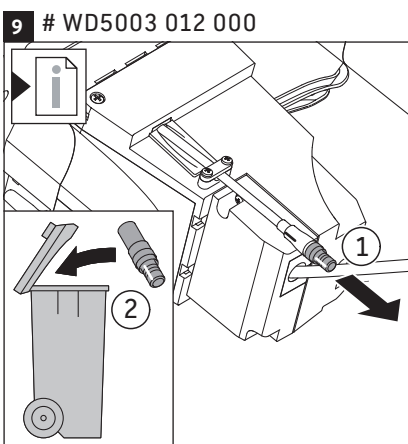
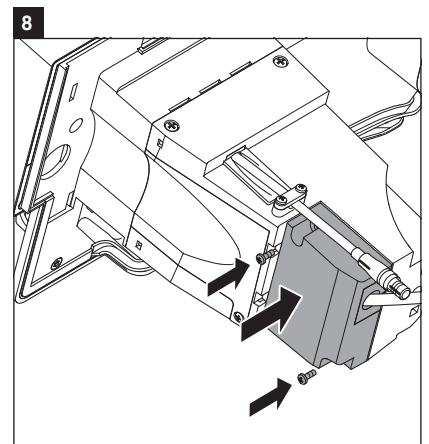
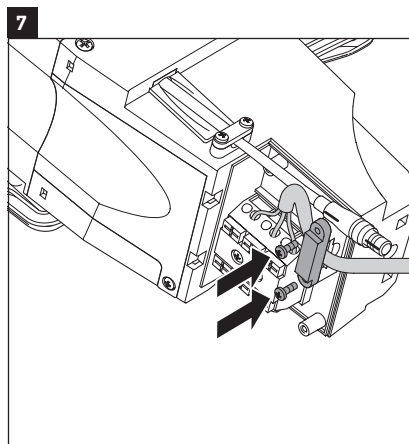
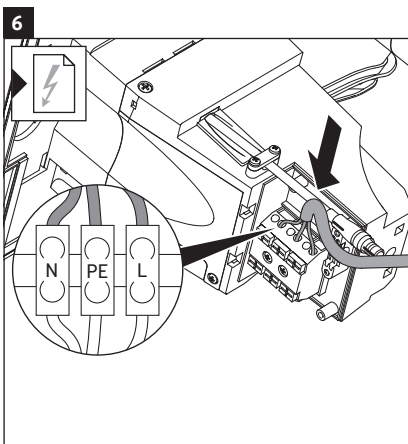
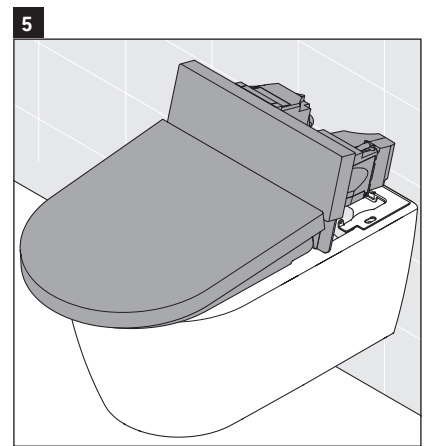
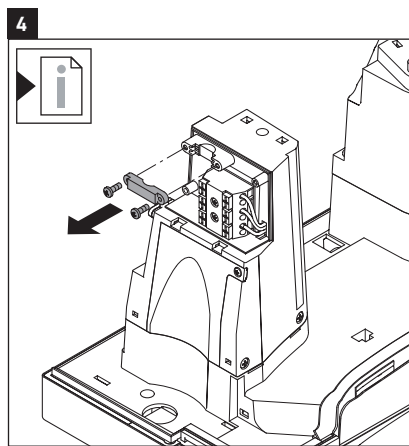
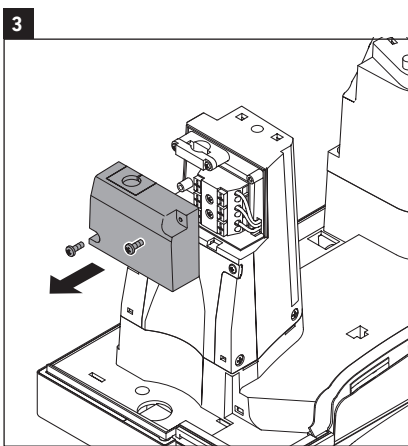
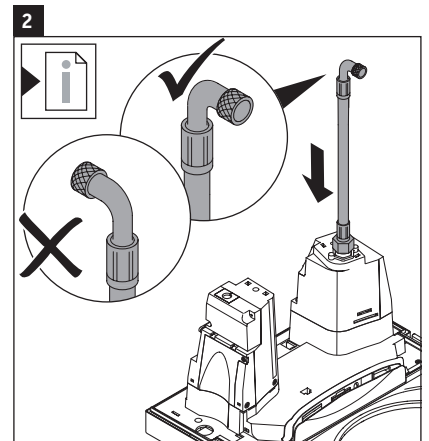
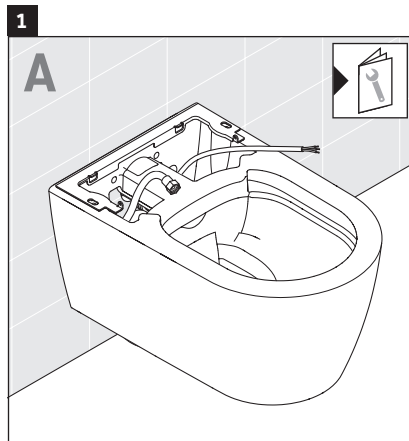
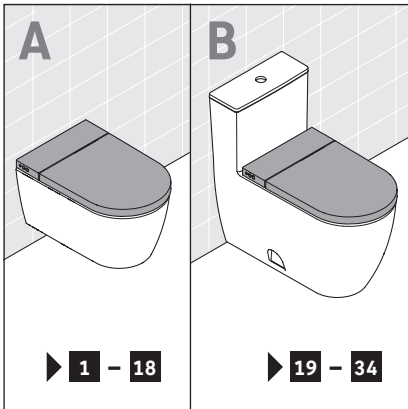
#### Product damage due to limescale build-up

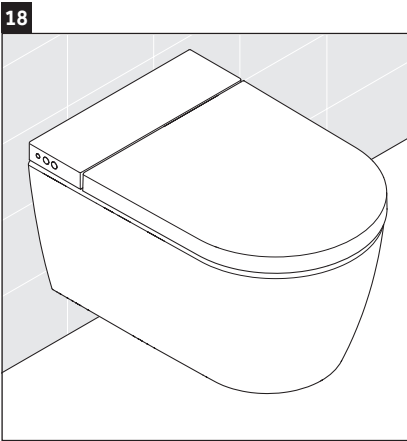
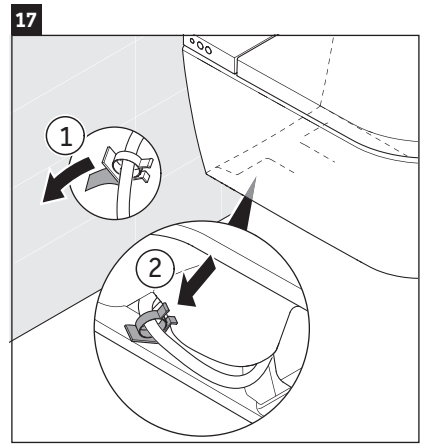
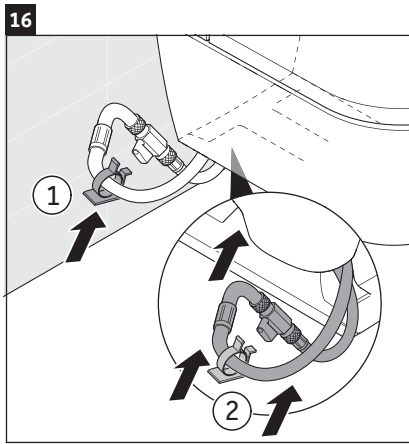
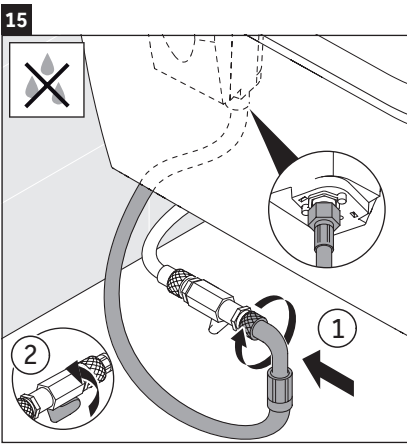
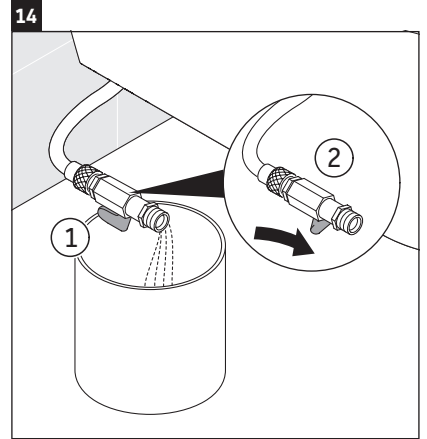
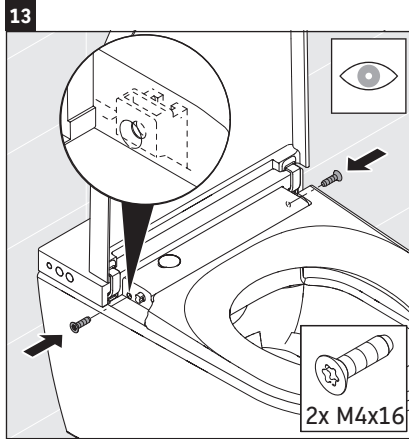
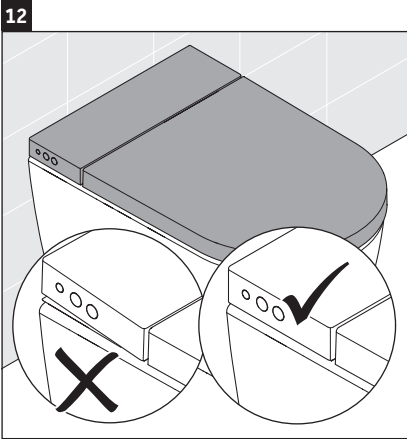
In regions with hard water, limescale build-up can impair the performance of the product.

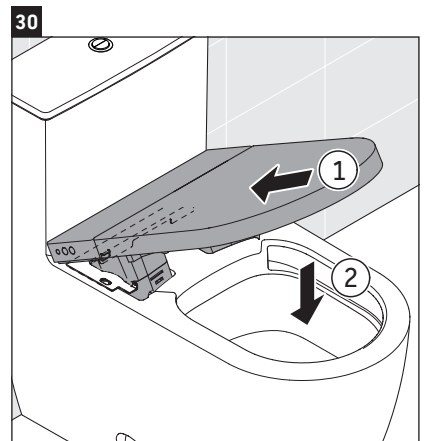
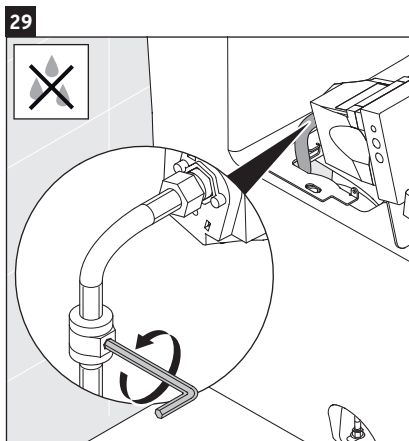
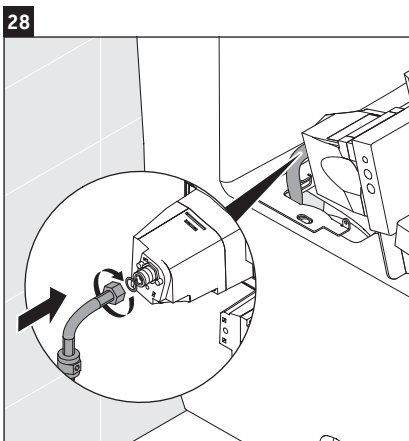
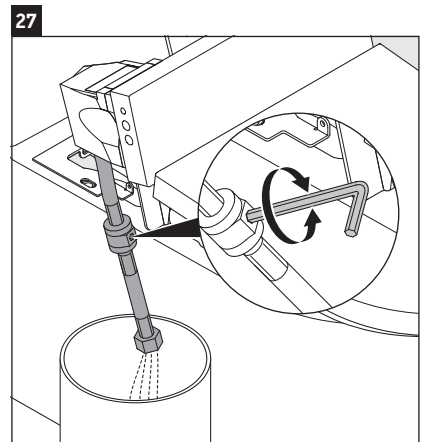
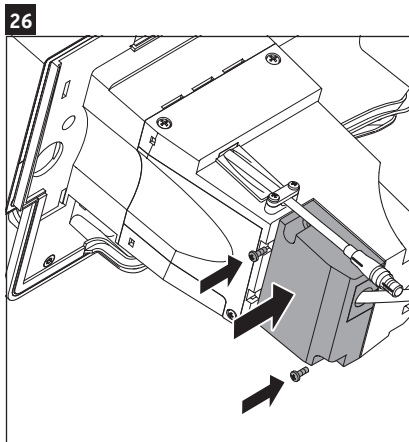
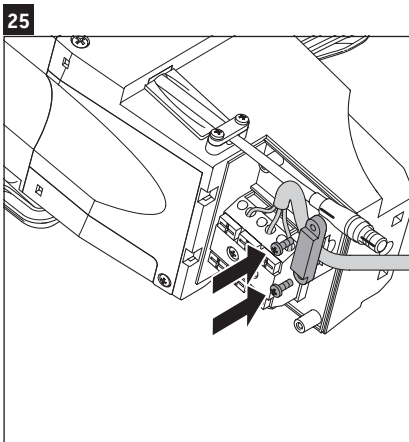
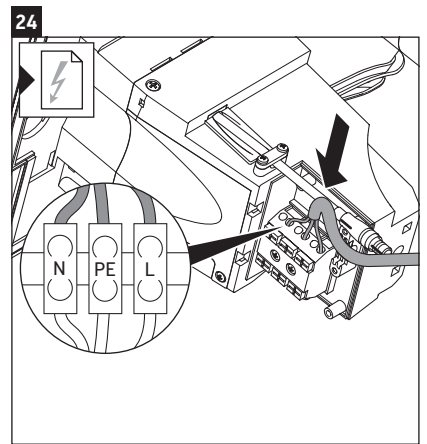
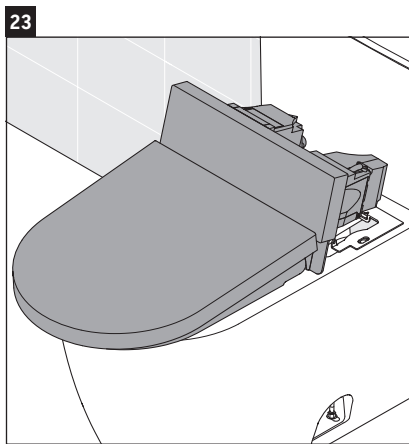
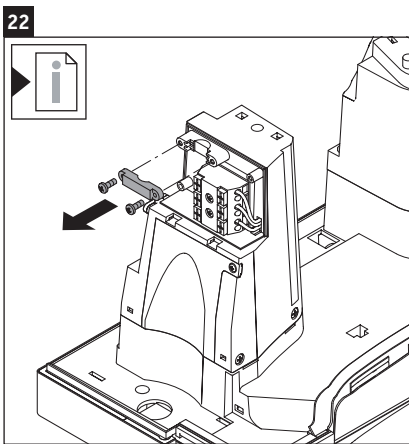
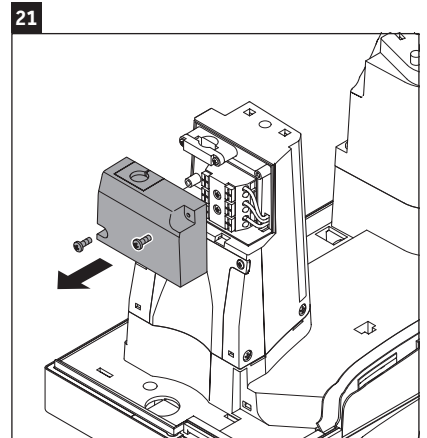
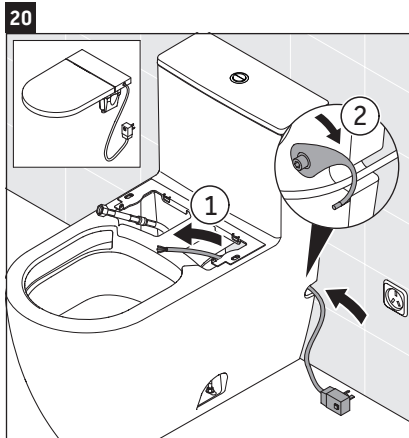
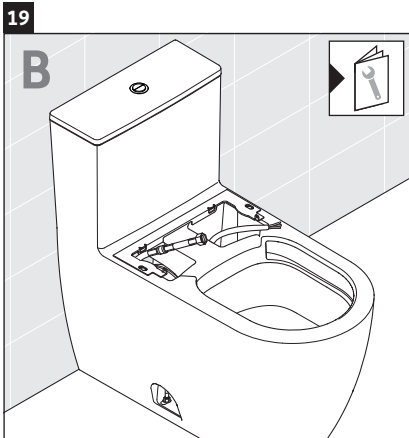
- > Check the water quality in your region. Duravit recommends the installation of a water softener with water hardness  $\geq 14^\circ$  dH (2.5 mmol/l).

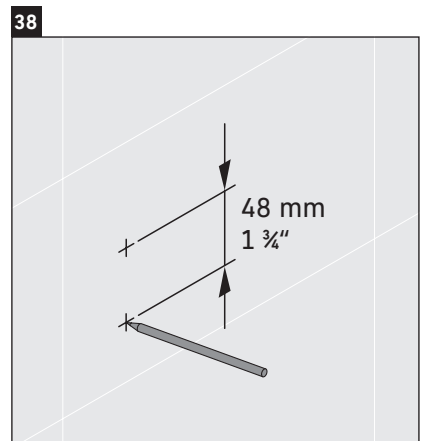
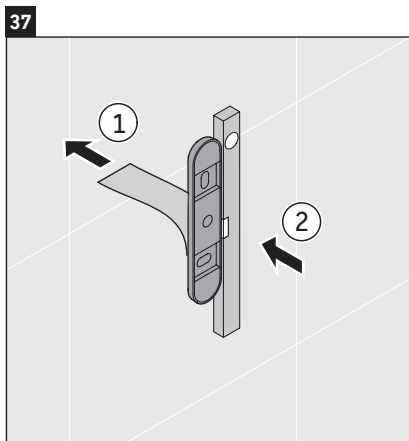
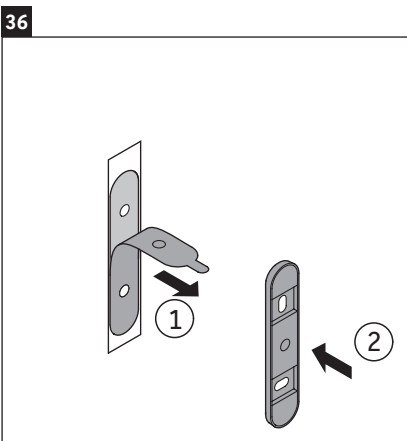
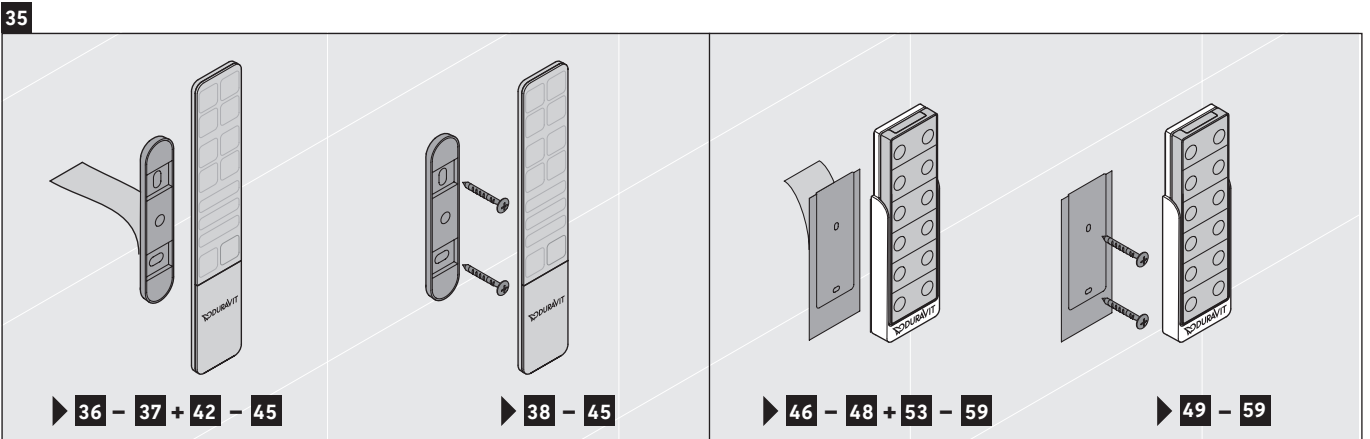
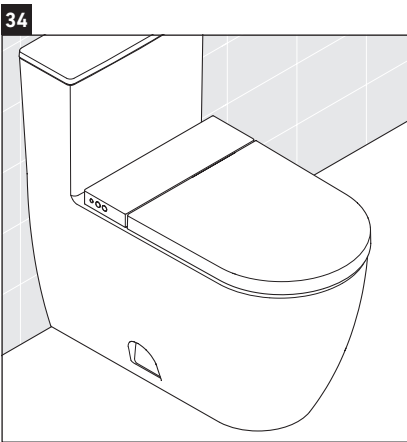
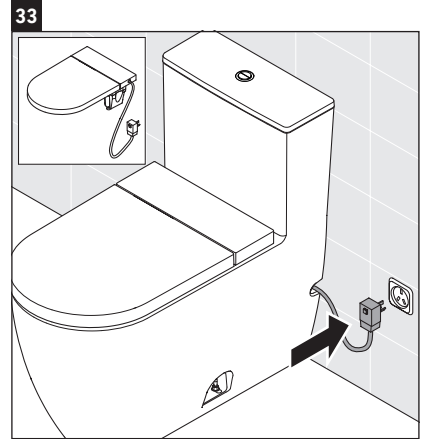
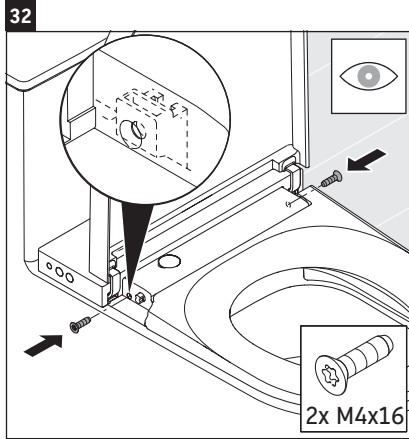




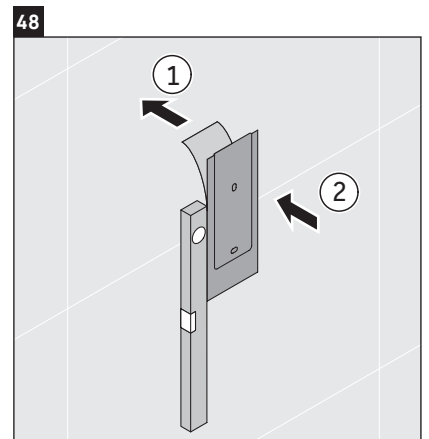
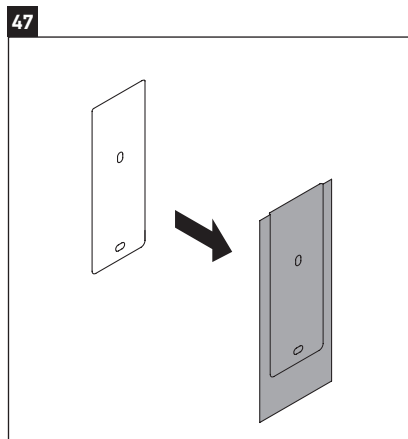
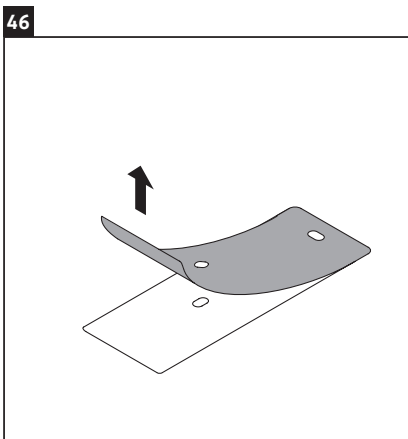
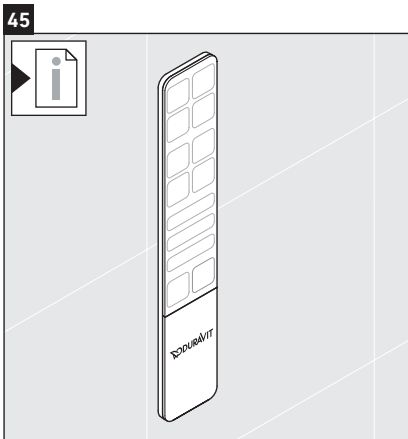
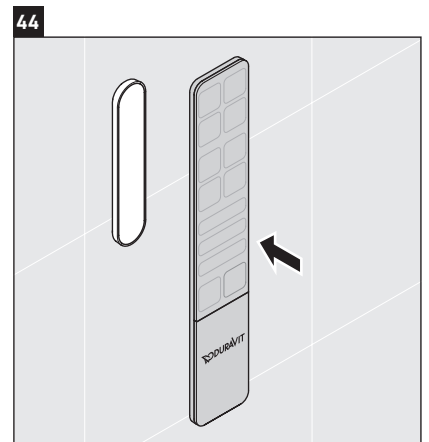
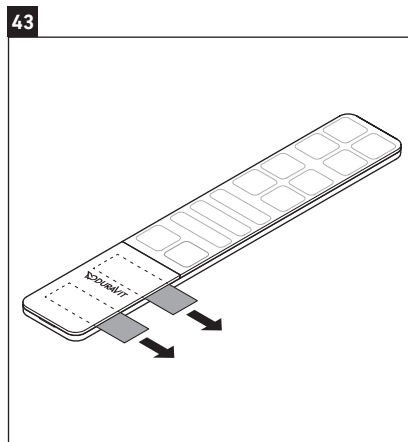
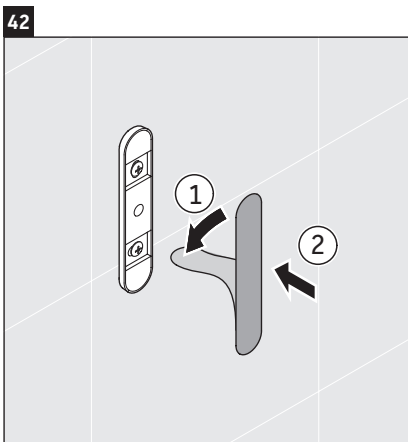
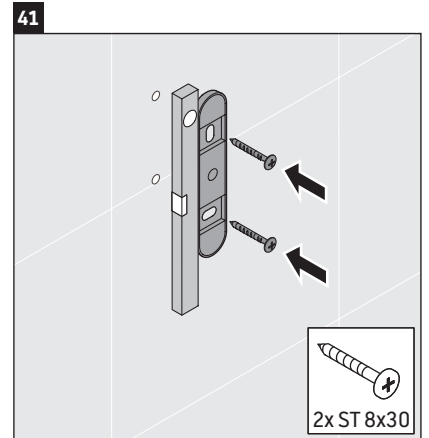
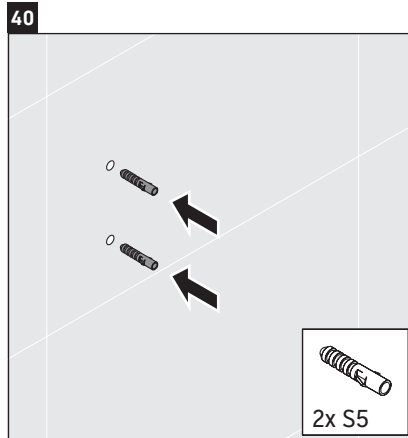
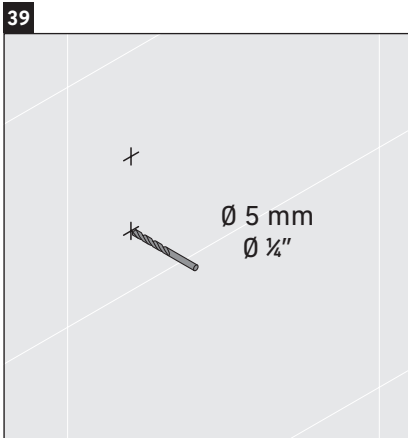


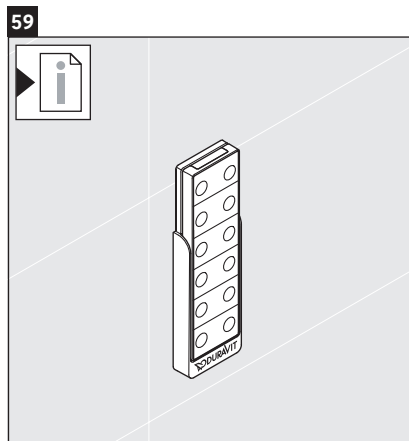
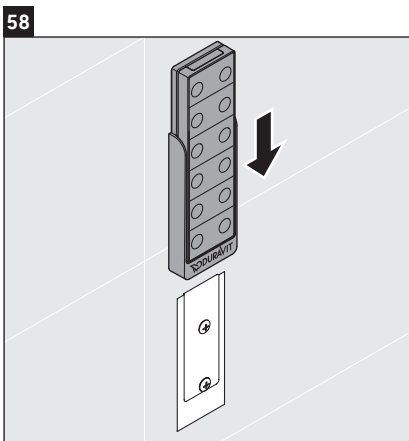
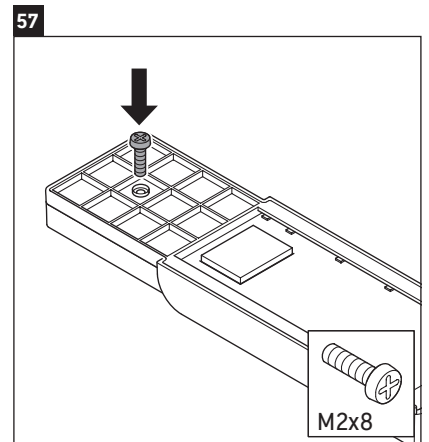
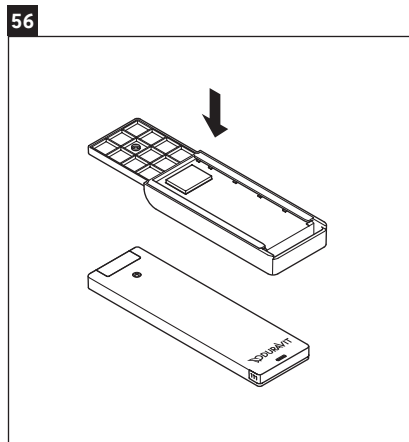
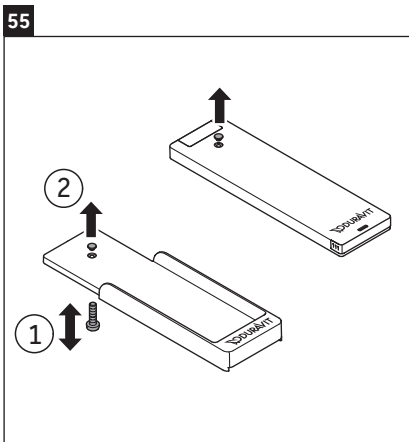
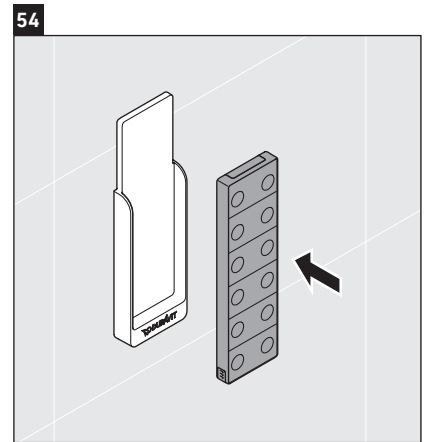
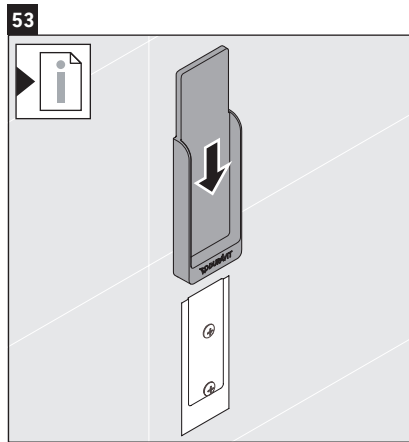
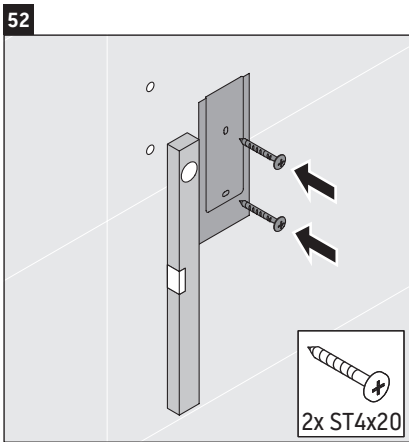
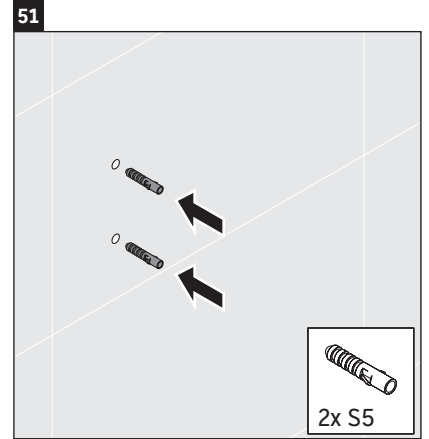
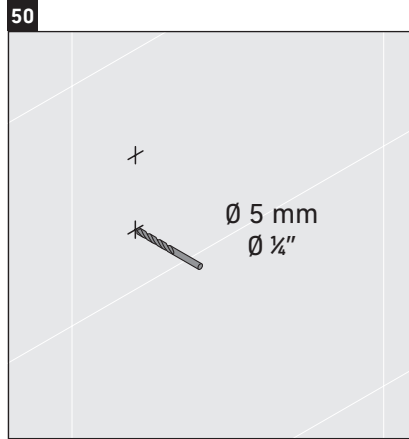
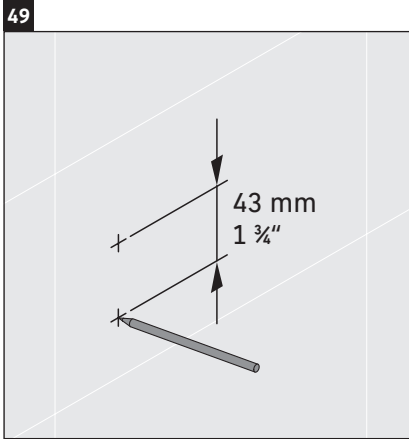














**DURAVIT AG**  
P.O. Box 240  
Werderstr. 36  
78132 Hornberg  
Germany  
Phone +49 78 33 70 0  
Fax +49 78 33 70 289  
info@duravit.com  
www.duravit.com

杜拉维特（中国）洁具有限公司  
重庆市江津区珞璜工业园B区园区大道88号  
客服电话 +86 21 61542410  
周一至周五 9:00-12:00; 13:00-17:00  
info@cn.duravit.com  
www.duravit.cn  
www.sensowash.cn

