

RANA Linear Recessed - Louvre+Prismatic Optic

RANA LINEAR R 3KLM TW LOUV+PRI SSC01 WHITE
0052485



PRODUCT OVERVIEW

Product name	RANA LINEAR R 3KLM TW LOUV+PRI SSC01 WHITE
Technology	LED (3 SDCM)
Cap/Base	N/A
Housing	Steel
Mount	Ceiling recessed mounting
Fixture rating	Enclosed
Warranty	5 years
Fixture luminous flux (lm)	2900
Luminaire efficacy (lm/W)	94
Light colour	Tuneable White
CRI (Ra)	80
Colour Variation Initial (SDCM)	SDCM3
Glare control	< 17
Photobiological Risk Group	RG1
Total power consumption (W)	31
Electrical protection	Class I
Control gear type	Electronic ballast
LED Flickering Rate	Ultra low (5% or less)
Housing colour	RAL 9016 - Traffic white / Bezel
IP rating	IP20
IK rating	IK07
Product EAN number	5410288524856

DATA TABLE

General data

Product name	RANA LINEAR R 3KLM TW LOUV+PRI SSC01 WHITE
Technology	LED (3 SDCM)
Cap/Base	N/A
Housing	Steel
Mount	Ceiling recessed mounting
Fixture rating	Enclosed

RANA Linear Recessed - Louvre+Prismatic Optic

RANA LINEAR R 3KLM TW LOUV+PRI SSC01 WHITE
0052485

Operating temperature range (°C)	-25°C...+40°C
Performance ambient temperature Tq (°C)	25
Warranty	5 years

Optical data

Fixture luminous flux (lm)	2900
Luminaire efficacy (lm/W)	94
Correlated colour temperature range (K)	3000 - 6000
Light colour	Tuneable White
CRI (Ra)	80
Colour Variation Initial (SDCM)	SDCM3
Glare control	< 17
Photobiological Risk Group	RG1

Electrical data

Total power consumption (W)	31
Primary Supply/Product voltage - min (V)	220
Lamp power factor	0.97
Electrical protection	Class I
Control gear type	Electronic ballast
Drive current (mA)	600
Inrush Current (A)	29
Inrush Duration (µs)	180
Glow Wire Test (°C)	850
Energy Efficiency Class (A->G) of contained light source	C
Nominal Frequency (Hz)	50/60Hz
LED Flickering Rate	Ultra low (5% or less)
Max. products per 10A C Breaker	21
Max. products per 20A B Breaker	27
Connectable conductor cross section - Max (mm ²)	2.5

Lifetime data

Lifespan L70 B50	60000
Lifespan L80 B10	60000
Lifespan L90 B50	45000
Lifespan L90 B20	41000
Lifespan L90 B10	39000

Physical data

Housing colour	RAL 9016 - Traffic white / Bezel
IP rating	IP20
IK rating	IK07
Diffuser finish	Prismatic
Diffuser material	PC Polycarbonate
Nominal Product Length (mm)	1150
Nominal Product Width (mm)	90
Weight (kg)	3.15

RANA Linear Recessed - Louvre+Prismatic Optic *RANA LINEAR R 3KLM TW LOUV+PRI SSC01 WHITE* 0052485

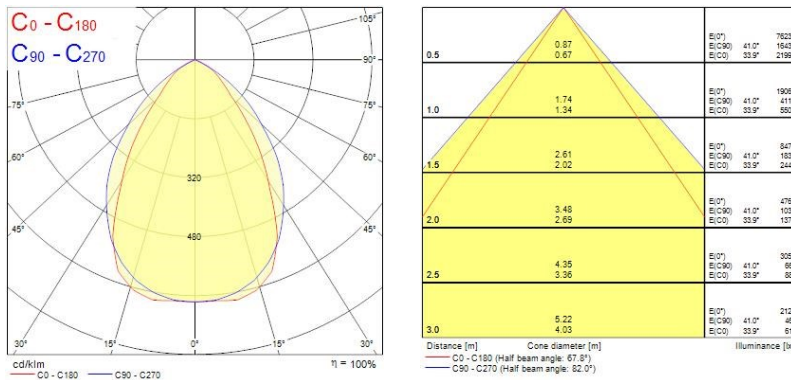
Packaging

Single packaging type	Carton
Product EAN number	5410288524856
Packaging single width (cm)	10.5
Packaging single depth (cm)	11.5
DUN14 (outer)	05410288524856
Packaging outer length / height (cm)	117.0

Safety data

Optimal operating condition (°C)	-25-40
----------------------------------	--------

PHOTOMETRY



TECHNICAL DRAWINGS

