

28 002 970 Product version from 4/1/2025



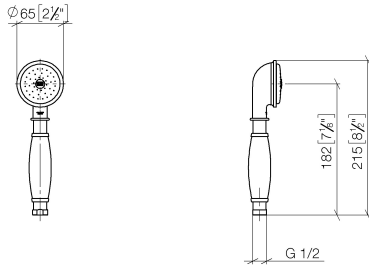
- spray head Ø 64mm
- COMPACT RAIN, max. flow rate 9 l/min (at 3 bar)
- Function from: 6 l/min
- 1/2" connection
- inherently safe from back flow
- with anti-scale system

**Notes:**

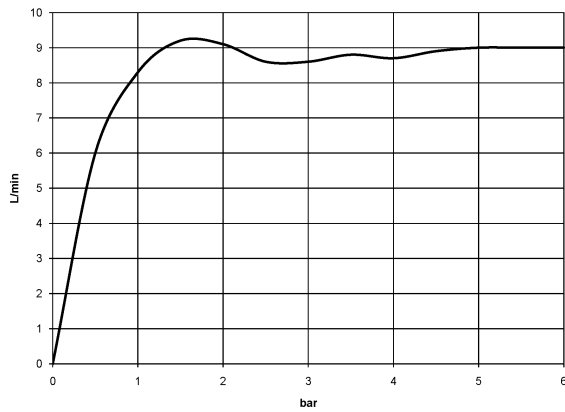
	Chrome	28 002 970-00
	Gold (23.9kt)	28 002 970-01
	Brushed Platinum	28 002 970-06
	Platinum	28 002 970-08
	Durabrand (23kt Gold)	28 002 970-09
	Brushed Durabrand (23kt Gold)	28 002 970-28
	Brushed Gold (PVD)	28 002 970-37
	Brushed Dark Brass (PVD)	28 002 970-39
	Brushed Bronze (PVD)	28 002 970-42
	Brushed Chrome	28 002 970-93
	Brushed Dark Platinum	28 002 970-99

28 002 970 Product version from 4/1/2025

mm [inches]



**Flow rate chart**



**Codes & Standards**

DIN 4109

ISO 3822

Scottish Water  
Byelaws

UK Water Supply  
Regulations

Ü-Zeichen



## MADISON Metal hand shower with porcelain insert (white) - Chrome

---

MADISON

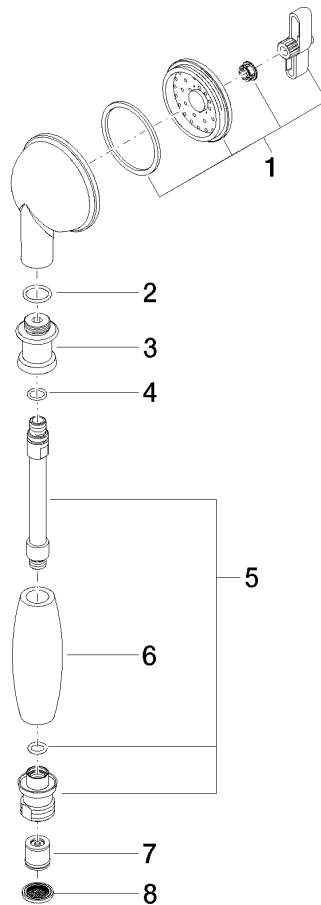
28 002 970 Product version from 4/1/2025

### Certificates and sustainability

---

LGA\_8

WRAS\_240502



### Spare parts list

No.	Item Number	Name	Quantity used	Delivery time
7	09 23 01 077 90	Back-flow preventer 8,7 l/min. -	1.00	14
2	09 14 10 069 90	O-Ring EPDM 70 14,0 x 1,78 mm -	1.00	14
1	90 12 01 010 00 90	Insert Spray filter, body spray 70 x 110 x 20 mm -	1.00	14
5	90 28 22 033 00-00	Connection Ø 24 x 129 mm - Chrome	1.00	20
6	11 167 820 60	Handle -	1.00	14
4	09 14 10 042 90	O-Ring EPDM 70 9,0 x 1,5 mm -	1.00	14
8	09 23 01 039 90	Sieve seal Ø 19 x 5,5 mm -	1.00	14
3	09 24 04 059 20-00	Nipple Ø 26 x 23,5 mm - Chrome	1.00	20