



Features

- Ceiling recessed LED Linear luminaire with MicroPrismatic Optic, Dimensions: 1154mm x 90mm x 91mm, Direct, White Body, SylSmart Standalone capable, Electric Class 1, Neutral White LED (4000K), 3100lm, 32W, 97lm/W efficacy, CRI>80, 3 SDCM (3-step MacAdam ellipse), Low LED Flicker (+/-5%), UGR<21, L90B10 at 50,000 hours, Glow Wire Test 850°C, Can be covered with building insulation of Glass Wool type.

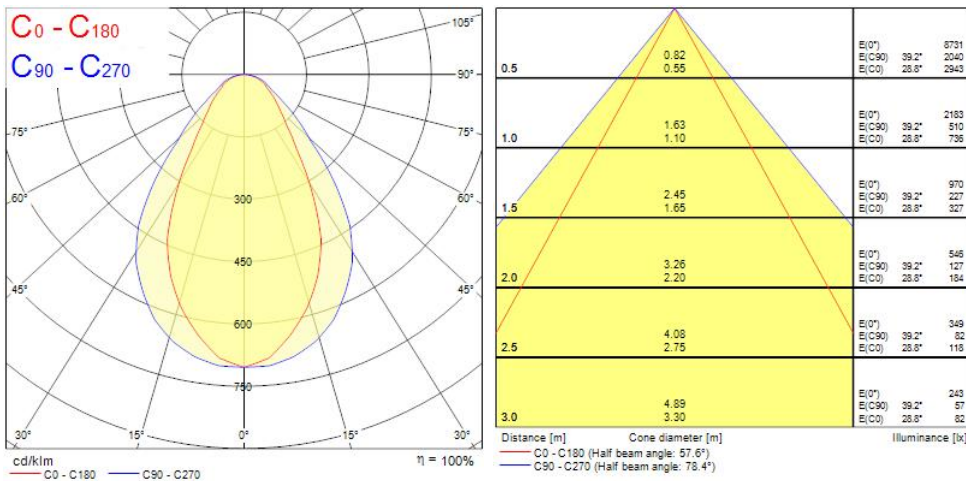
Product Overview

Product name	RANA LINEAR R 32 4K MPO SSC01 W
Technology	LED (3 SDCM)
Cap/Base	N/A
Housing	Steel
Mount	Ceiling recessed mounting
Fixture rating	Enclosed
Environment	Internal
Fixture luminous flux (lm)	3100
Luminaire efficacy (lm/W)	97
LOR (%)	100
Colour temperature (K)	4000
Light colour	Neutral White
CRI (Ra)	80
Colour Consistency (SDCM)	3
Colour Variation Initial (SDCM)	3
Glare control	< 21
Photobiological Risk Group	RG0
Total power consumption (W)	32
Electrical protection	Class I

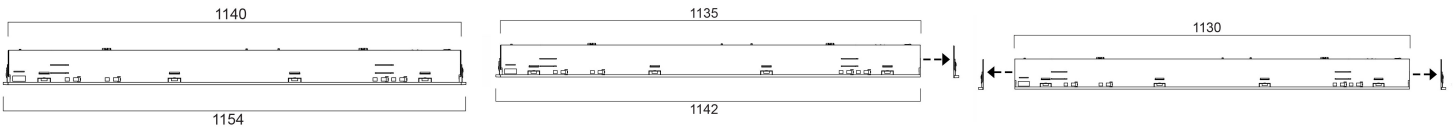
RANA LINEAR R 32 4K MPO SSC01 W 0052477

Control gear type	Electronic ballast
LED Flickering Rate	Ultra low (5% or less)
Housing colour	RAL 9016 - Traffic white / Bezel
IP rating	IP20
IK rating	IK07
Product EAN number	5410288524771
Warranty	5 years

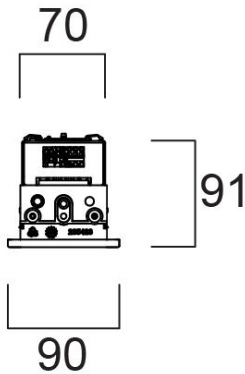
Photometry



Technical drawings



RANA LINEAR R 32 4K MPO SSC01 W 0052477



Data table

GENERAL DATA

Product name	RANA LINEAR R 32 4K MPO SSC01 W
Technology	LED (3 SDCM)
Cap/Base	N/A
Housing	Steel
Mount	Ceiling recessed mounting
Fixture rating	Enclosed
Environment	Internal
Operating temperature range (°C)	-25°C...+40°C
Performance ambient temperature Tq (°C)	25
Warranty	5 years

OPTICAL DATA

Fixture luminous flux (lm)	3100
Luminaire efficacy (lm/W)	97
LOR (%)	100
Colour temperature (K)	4000
Light colour	Neutral White
CRI (Ra)	80

RANA LINEAR R 32 4K MPO SSC01 W 0052477

Colour Consistency (SDCM)	3
Colour Variation Initial (SDCM)	3
Adjustable chromaticity	N
Glare control	< 21
Photobiological Risk Group	RG0

ELECTRICAL DATA

Total power consumption (W)	32
Primary Supply/Product voltage - min (V)	220
Lamp power factor	0.95
Electrical protection	Class I
Control gear required	No
Control gear type	Electronic ballast
Drive current (mA)	600
Inrush Current (A)	20
Inrush Duration (µs)	25
Glow Wire Test (°C)	850
Energy Efficiency Class (A->G) of contained light source	C
Nominal Frequency (Hz)	50/60Hz
LED Flickering Rate	Ultra low (5% or less)
Max. products per 10A C Breaker	57
Max. products per 20A B Breaker	68
Connectable conductor cross section - Max (mm ²)	2.5

LIFETIME DATA

Lifespan L70 B50	72000
Lifespan L70 B20	60000
Lifespan L70 B10	72000
Lifespan L80 B50	72000
Lifespan L80 B20	60000
Lifespan L80 B10	72000
Lifespan L90 B50	72000

RANA LINEAR R 32 4K MPO SSC01 W 0052477

Lifespan L90 B20	50000
Lifespan L90 B10	46000

PHYSICAL DATA

Housing colour	RAL 9016 - Traffic white / Bezel
IP rating	IP20
IK rating	IK07
Diffuser finish	Prismatic
Diffuser material	PC Polycarbonate
Nominal Product Length (mm)	1150
Nominal Product Width (mm)	90
Weight (kg)	3.15
Recessed Depth (mm)	90

PACKAGING

Single packaging type	Carton
Product EAN number	5410288524771
Packaging single width (cm)	10.5
Packaging single depth (cm)	11.5
DUN14 (outer)	05410288524771
Packaging outer length / height (cm)	117.0

SAFETY DATA

Optimal operating condition (°C)	-25-40
Special purpose lamp	No
Dry applications use only	No
Suitable for household illumination	No