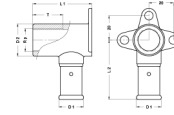


2PG-2005: Backplate elbow female Gas 20x3/4"



Commercial information

These fittings offer great advantages with regard to corrosion. The fittings are equipped with a special O-ring. This O-ring is made of the material HNBR and is resistant to gas.

- The housing of the fitting is made of brass CW617N.
- The fitting is equipped with a bumper ring to prevent direct galvanic contact between the aluminum of the pipe and the brass of the fitting.
- Electrolysis is therefore excluded.
- The fitting is equipped with O-rings made of EPDM and stainless steel press sleeves with 3 control windows.
- To prevent assembly errors, the stainless steel press sleeves are provided with the dimensions and the type of press profile with which the press can be pressed.

Basic unit dimensions

Height	46 mm
Length	79 mm
Width	52 mm
Net weight	0.226 kg

Certificates

DVGW Gas, GASTEC

Applications

Gas

Solutions

Building installations, Industry, Oil & gas, Utility, Shipbuilding

Technical characteristics

Housing material	Brass	Outer pipe diameter connection	20 Millimetre
Housing material	Brass	Length of connection 1	30.5 Millimetre
Surface protection	Untreated	Working length connection 1	25 Millimetre
Shape	Right-angled	Length of connection 2	50 Millimetre
Thread size	3/4 inch	Working length connection 2	50 Millimetre
System specific	✓	Length from wall plate	50 Millimetre
Nominal diameter connection 2	3/4 inch (20)	Length of connection 3	0 Millimetre
Connection	Press sleeve	Working length connection 3	0 Millimetre
Thread size tap connection	3/4 inch	Medium temperature (continuous)	-20 60 Degrees celsius
Contour code	TH	Max. operating pressure at 20 °C	16 Bar
DVGW quality mark for gas	✓		
DVGW quality mark for water	✗		
KIWA certified	✗		
Gastec QA mark	✓		
KOMO certified	✗		
Type approval according to BBR/EKS	✗		