

28 687 970 Product version from 4/1/2025



- rain shower Ø 300 mm
- Rain shower material: metal
- PURE RAIN, max. flow rate 14 l/min (at 3 bar)
- Function from: 10 l/min
- quick clearing
- with anti-scale system

Technical data:

- rosette Ø 60 mm
- 1/2" connection

Notes:

	Brushed Dark Bronze (PVD)	28 687 970-43
	Chrome	28 687 970-00
	Brushed Platinum	28 687 970-06
	Platinum	28 687 970-08
	Dark Chrome	28 687 970-19
	Light Gold (PVD)	28 687 970-26
	Brushed Light Gold (PVD)	28 687 970-27
	Brushed Durabronze (23kt Gold)	28 687 970-28
	Matte Black	28 687 970-33
	Brushed Gold (PVD)	28 687 970-37
	Brushed Dark Brass (PVD)	28 687 970-39
	Brushed Bronze (PVD)	28 687 970-42
	Brushed Champagne (22kt Gold)	28 687 970-46
	Champagne (22kt Gold)	28 687 970-47
	Brushed Chrome	28 687 970-93
	Brushed Dark Platinum	28 687 970-99

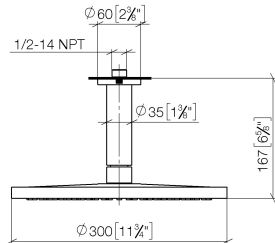
Recommended miscellaneous



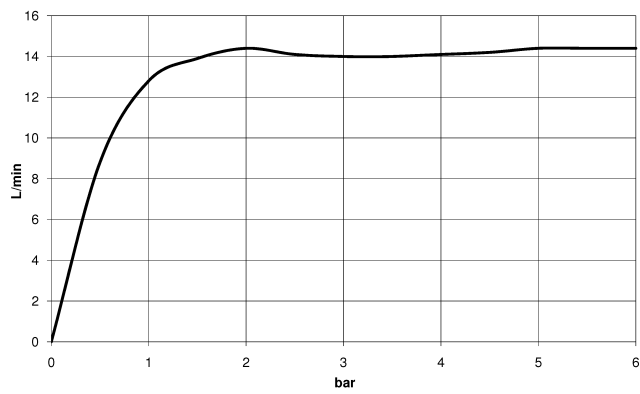
- Concealed wall elbow -** 35 085 970 90
- min. recess depth 90 mm
 - max. recess depth 163 mm

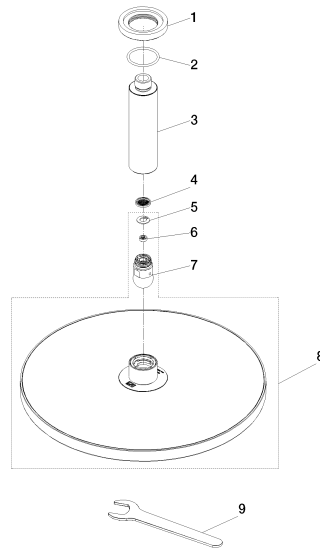
28 687 970 Product version from 4/1/2025

mm [inches]



Flow rate chart





Spare parts list

No.	Item Number	Name	Quantity used	Delivery time
6	09 23 01 101 90	Flow limiter pink 14 l/min. -	1.00	14
2	09 14 10 141 90	O-Ring NBR 70 34,59 x 2,62 mm -	1.00	14
7	04 18 40 276 00 90	Tube aerator without flow limiter Ø 14 x 37,5 mm, without limitation -	1.00	14
4	09 23 01 039 90	Sieve seal Ø 19 x 5,5 mm -	1.00	14
3	09 11 03 080-43	connection	1.00	82
1	09 27 22 040-43	rosette	1.00	82
8	90 12 05 096 00-43	Rainshower round Ø 300 mm - Brushed Dark Bronze (PVD)	1.00	40
5	09 16 01 014 90	Ring Retaining ring Ø 15 x 1 mm -	1.00	14
9	90 30 09 069 00 90	Spanner -	1.00	14