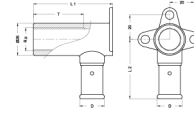


4P-1604: Backplate elbow female extended model 16x1/2"



Commercial information

These fittings offer great advantages with regard to corrosion.

- The housing of the fitting is made of brass CW617N.
- The fitting is equipped with a bumper ring to prevent direct galvanic contact between the aluminum of the pipe and the brass of the fitting.
- Electrolysis is therefore excluded.
- The fitting is equipped with O-rings made of EPDM and stainless steel press sleeves with 3 control windows.
- To prevent assembly errors, the stainless steel press sleeves are provided with the dimensions and the type of press profile with which the press can be pressed.

Basic unit dimensions

Height	78 mm
Length	76 mm
Width	52 mm
Net weight	0.245 kg

Certificates

ATG, DVGW Wasser, ETA, KIWA, ÖVGW Wasser, WRAS, KOMO, STF, ÖN EN 21003-2/-3, GOST-R, ITC, TSU, QB (CSTBat), AFNOR, ACS, PZH, DNV-GL, Sans 21003, Kontrol Biro, EMI

Applications

Potable water, Heating, Compressed air, Cooling, Sanitary

Solutions

Building installations, Industry, Utility, Shipbuilding

Technical characteristics

Housing material	Brass	Outer pipe diameter connection	16 Millimetre
Housing material	Brass	Length of connection 1	67 Millimetre
Surface protection	Untreated	Length of connection 2	71.5 Millimetre
Shape	Right-angled	Working length connection 2	54 Millimetre
Thread size	1/2 inch	Length from wall plate	78 Millimetre
System specific	✓	Length of connection 3	0 Millimetre
Nominal diameter connection 2	1/2 inch (15)	Working length connection 3	0 Millimetre
Connection	Press sleeve	Medium temperature (continuous)	-10 70 Degrees celsius
Thread size tap connection	1/2 inch	Max. operating pressure at 20 °C	16 Bar
Contour code	TH		
DVGW quality mark for gas	✗		
DVGW quality mark for water	✓		
KIWA certified	✓		
Gastec QA mark	✗		
KOMO certified	✓		
Type approval according to BBR/EKS	✗		