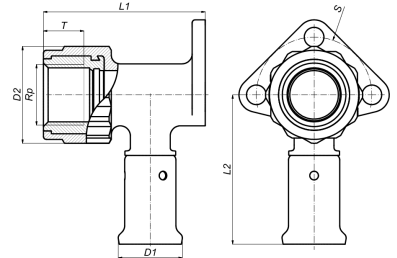


2PK-2605: Backplate elbow female 26x3/4"



Commercial information

PVDF press fittings in combination with multilayer pipe, a completely corrosion-free system. The synthetic press fittings are made from injection moulded PVDF (Polyvinylidene fluoride)*. PVDF offers the user a unique combination of properties:

- Highly resistant to pressure and temperature
- Excellent mechanical strength
- Extreme flexibility: bending up to 10° is possible
- Perfectly suited for drinking water and food
- Highly resistant to chemicals and corrosion
- Embedding is possible without extra protection

Basic unit dimensions

Height	66 mm
Length	89 mm
Width	62 mm
Net weight	0.135 kg

Certificates

ATG, QB (CSTBat), DVGW Wasser, ETA, KIWA, ÖVGW Wasser, SINTEF, WRAS, KOMO, STF, ÖN EN 21003-2/-3, GOST-R, ITC, TSU, AFNOR, PZH, ACS, DNV-GL, Aenor, Sans 21003, Kontrol Biro, RISE, EMI

Applications

Potable water, Heating, Compressed air, Cooling, Sanitary

Solutions

Building installations, Industry, Utility, Shipbuilding

Technical characteristics

Housing material	Polyvinylidene fluoride (PVDF)	Outer pipe diameter connection	26 Millimetre
Material quality	Other	Length of connection 1	58 Millimetre
Surface protection	Untreated	Working length connection 1	25 Millimetre
Shape	Right-angled	Length of connection 2	43 Millimetre
System specific	✓	Working length connection 2	27.5 Millimetre
Nominal diameter connection 2	3/4 inch (20)	Length from wall plate	56 Millimetre
Connection	Press sleeve	Length of connection 3	0 Millimetre
Thread size tap connection	3/4 inch	Working length connection 3	0 Millimetre
Contour code	TH	Medium temperature (continuous)	-10 70 Degrees celsius
DVGW quality mark for gas	✗	Max. operating pressure at 20 °C	16 Bar
DVGW quality mark for water	✓	Zeta value	1.385
Compliant with NF 545	✗		
KIWA certified	✓		
Gastec QA mark	✗		
KOMO certified	✓		
Type approval according to BBR/EKS	✗		