

INSAVER SLIM 205/225 MULTIPOWER

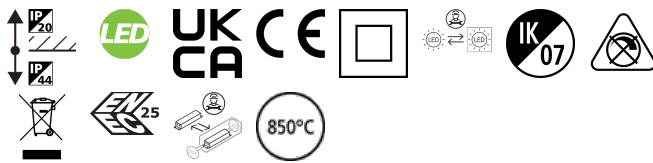
Insaver Slim IP44 205 Multi650-2050 840

0030551



Product features

- Insaver Slim is a ceiling recessed LED downlight (IP44 from the front), Die-cast aluminium body, loop in loop out connector for quick installation, Non dimmable LED driver, 4000K; UGR <19 with shallow product depth 60mm. The range features a multipower functionality where the luminous flux of the luminaire can be tailored to local needs by only setting a quick selector switch on the driver. 8 steps available with adjustable lumen output of 650 - 2050lm at 4000K. Meets TP(a) requirements.



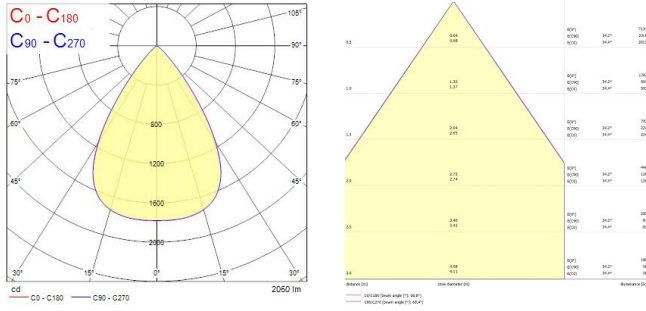
PRODUCT OVERVIEW

Product name	Insaver Slim IP44 205 Multi650-2050 840
Technology	LED
Cap/Base	N/A
Housing	Aluminium
Mount	Ceiling recessed mounting
General application	Hospitality, Office, Retail
ETIM Class	EC001744
E-number FI	4278528
Warranty	5 years
Fixture luminous flux (lm)	2050
Luminaire efficacy (lm/W)	128
Colour temperature (K)	4000
Light colour	Neutral White
CRI (Ra)	80
Colour Variation Initial (SDCM)	SDCM3
Beam Angle (°)	70
Glare control	< 19
Photobiological Risk Group	RG1
Total power consumption (W)	16
Electrical protection	Class II
Control gear type	LED driver constant current
Dimmable	No
Dimming method	N/A
LED Flickering Rate	Ultra low (5% or less)
Housing colour	RAL 9010 - Pure white
IP rating	IP44/20
IK rating	IK07
Product EAN number	5410288305516

PHOTOMETRY

INSAVER SLIM 205/225 MULTIPOWER

Insaver Slim IP44 205 Multi650-2050 840
0030551



TECHNICAL DRAWINGS

