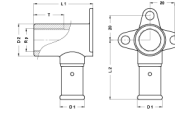


## 2PG-2005: Backplate elbow female Gas 20x3/4"



### Commercial information

These fittings offer great advantages with regard to corrosion. The fittings are equipped with a special O-ring. This O-ring is made of the material HNBR and is resistant to gas.

- The housing of the fitting is made of brass CW617N.
- The fitting is equipped with a bumper ring to prevent direct galvanic contact between the aluminum of the pipe and the brass of the fitting.
- Electrolysis is therefore excluded.
- The fitting is equipped with O-rings made of EPDM and stainless steel press sleeves with 3 control windows.
- To prevent assembly errors, the stainless steel press sleeves are provided with the dimensions and the type of press profile with which the press can be pressed.

#### Basic unit dimensions

Height	46 mm
Length	79 mm
Width	52 mm
Net weight	0.226 kg

#### Certificates

DVGW Gas, GASTEC

#### Applications

Gas

#### Solutions

Building installations, Industry, Oil & gas, Utility, Shipbuilding

## Technical characteristics

Housing material	Brass	Outer pipe diameter connection	20 Millimetre
Housing material	Brass	Length of connection 1	30.5 Millimetre
Surface protection	Untreated	Working length connection 1	25 Millimetre
Shape	Right-angled	Length of connection 2	50 Millimetre
Thread size	3/4 inch	Working length connection 2	50 Millimetre
System specific	✓	Length from wall plate	50 Millimetre
Nominal diameter connection 2	3/4 inch (20)	Length of connection 3	0 Millimetre
Connection	Press sleeve	Working length connection 3	0 Millimetre
Thread size tap connection	3/4 inch	Medium temperature (continuous)	-20 60 Degrees celsius
Contour code	TH	Max. operating pressure at 20 °C	16 Bar
DVGW quality mark for gas	✓		
DVGW quality mark for water	✗		
KIWA certified	✗		
Gastec QA mark	✓		
KOMO certified	✗		
Type approval according to BBR/EKS	✗		