

INSAVER SLIM 205/225 MULTIPOWER

Insaver Slim IP44 205 Multi620-1950 830

0030550



Product features

- Insaver Slim is a ceiling recessed LED downlight (IP44 from the front), Die-cast aluminium body, loop in loop out connector for quick installation, Non dimmable LED driver, 3000K; UGR <19 with shallow product depth 60mm. The range features a multipower functionality where the luminous flux of the luminaire can be tailored to local needs by only setting a quick selector switch on the driver. 8 steps available with adjustable lumen output of 620 - 1950lm at 3000K . Meets TP(a) requirements.



PRODUCT OVERVIEW

Product name	Insaver Slim IP44 205 Multi620-1950 830
Technology	LED
Cap/Base	N/A
Housing	Aluminium
Mount	Ceiling recessed mounting
General application	Hospitality, Office, Retail
ETIM Class	EC001744
E-number FI	4278527
Warranty	5 years
Fixture luminous flux (lm)	1950
Luminaire efficacy (lm/W)	122
Colour temperature (K)	3000
Light colour	Warm White
CRI (Ra)	80
Colour Variation Initial (SDCM)	SDCM3
Beam Angle (°)	70
Glare control	< 19
Photobiological Risk Group	RG1
Total power consumption (W)	16
Electrical protection	Class II
Control gear type	LED driver constant current
Dimmable	No
Dimming method	N/A
LED Flickering Rate	Ultra low (5% or less)
Housing colour	RAL 9010 - Pure white
IP rating	IP44/20
IK rating	IK07
Product EAN number	5410288305509

DATA TABLE

General data

INSAVER SLIM 205/225 MULTIPOWER

Insaver Slim IP44 205 Multi620-1950 830

0030550

Product name	Insaver Slim IP44 205 Multi620-1950 830
Technology	LED
Cap/Base	N/A
Housing	Aluminium
Mount	Ceiling recessed mounting
General application	Hospitality, Office, Retail
Operating temperature range (°C)	-20°C...+40°C
ETIM Class	EC001744
E-number FI	4278527
Warranty	5 years

Optical data

Fixture luminous flux (lm)	1950
Luminaire efficacy (lm/W)	122
Colour temperature (K)	3000
Light colour	Warm White
CRI (Ra)	80
Colour Variation Initial (SDCM)	SDCM3
Beam Angle (°)	70
Distribution type	Symmetric
Glare control	< 19
Photobiological Risk Group	RG1

Electrical data

Total power consumption (W)	16
Primary Supply/Product voltage - min (V)	220
Primary Supply/Product voltage - max (V)	240
Lamp power factor	0.9
THD (at 230 V, 50 Hz, full load, at 100% dimming level) xx.x %	5.0
Electrical protection	Class II
Control gear type	LED driver constant current
Dimmable	No
Dimming method	N/A
Drive current (mA)	500
Inrush Current (A)	10
Inrush Duration (µs)	100
Glow Wire Test (°C)	850
Energy Efficiency Class (A->G) of contained light source	D
Nominal Frequency (Hz)	50/60Hz
LED Flickering Rate	Ultra low (5% or less)
Max. products per 10A C Breaker	32
Max. products per 16A C Breaker	51
Max. products per 16A B Breaker	51
Connectable conductor cross section - Min (mm²)	0.75
Connectable conductor cross section - Max (mm²)	1.5

INSAVER SLIM 205/225 MULTIPOWER

Insaver Slim IP44 205 Multi620-1950 830

0030550

Lifetime data

Lifespan L70 B50	100000
Lifespan L80 B20	88000
Lifespan L80 B10	80000
Lifespan L90 B10	39000

Physical data

Housing colour	RAL 9010 - Pure white
IP rating	IP44/20
IK rating	IK07
Diffuser finish	Other
Diffuser material	None
Reflector finish	Silver
Nominal Product Height (mm)	60
Nominal Product Diameter (mm)	220
Cutout Dimensions (W x L in mm or Diameter in mm)	205
Weight (kg)	0.73

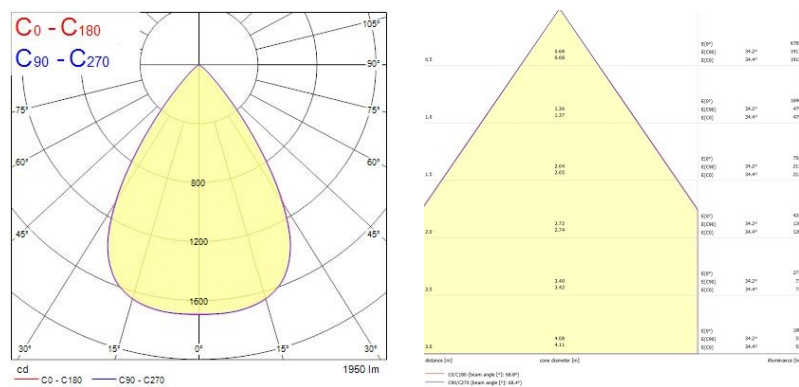
Packaging

Single packaging type	Carton
Product EAN number	5410288305509
Packaging single length / height (cm)	23.2
Packaging single width (cm)	23.2
Packaging single depth (cm)	8.0
DUN14 (outer)	15410288305506
Units per outer package	12
Packaging outer length / height (cm)	48.0
Packaging outer width (cm)	48.0
Packaging outer depth (cm)	26.0

Safety data

Optimal operating condition (°C)	-20-40
----------------------------------	--------

PHOTOMETRY



INSAVER SLIM 205/225 MULTIPOWER

Insaver Slim IP44 205 Multi620-1950 830

0030550

TECHNICAL DRAWINGS

