

# ENSTALL

# ClickFit Evo

METAL ROOF



## Smart solution for steel roofs

**With minimal basic components  
and a single tool, you are assured of  
quick, easy and safe installation.**

### One system, endless possibilities

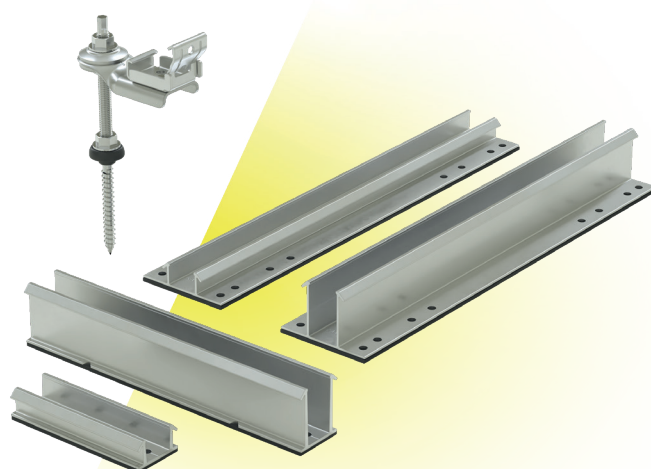
The ClickFit Evo mounting profiles are suitable for trapezoidal sheets, sandwich panels and corrugated steel roofs. For other types of steel roofs, we recommend the ClickFit Evo hanger bolt.

### Portrait and landscape

There are mounting profiles for both landscape and portrait installations. You can choose between low profiles for a sleek look or high profiles to create space for larger optimisers and inverters.

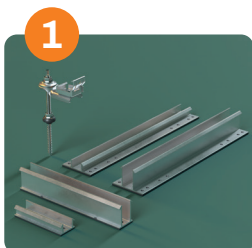
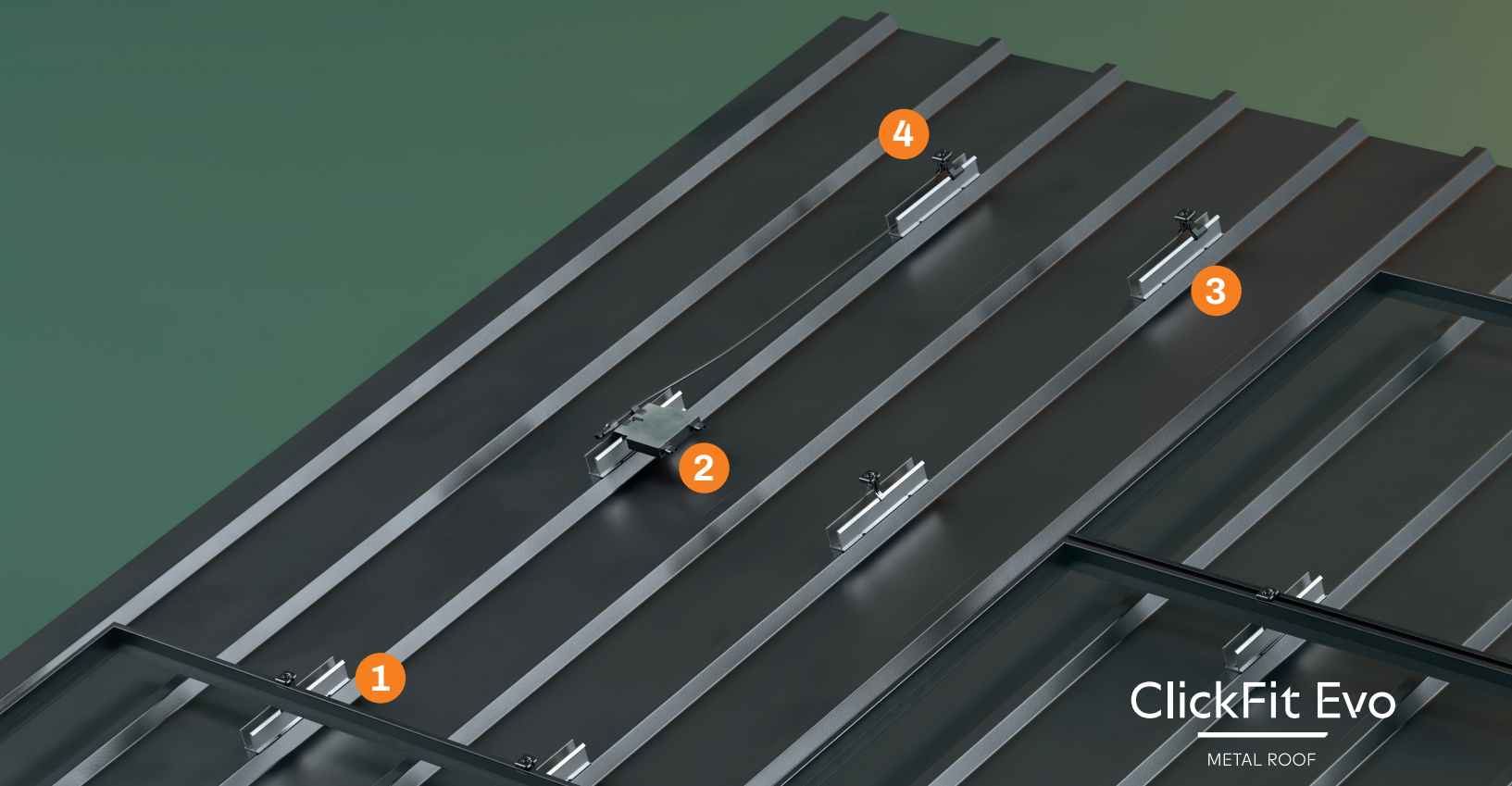
## Why ClickFit Evo for Steel Roofs?

- ✓ No pre-drilling required
- ✓ Pre-glued EPDM rubber seals
- ✓ Minimal number of basic components
- ✓ Choice of high/low profiles or hanger bolt
- ✓ Portrait and landscape orientation



**Want to know more about ClickFit Evo for Steel Roofs? Go to [www.enstall.com](http://www.enstall.com)**

# Rock-solid base for solar panels



## Choice of 4 mounting profiles

High or low mounting profile, portrait or landscape placement. On other types of steel roofs, the hanger bolt can be used.



## Placement optimiser

The high mounting profile provides sufficient space for most optimisers and micro-inverters.



## Mounting profiles with rubber

The EPDM rubber seals on the profiles guarantee watertightness. Pre-drilling is not necessary thanks to the self-tapping screw.



## Always the right measurements

The universal module clamp is heightadjustable and therefore suitable for solar panels with a frame thickness of 30-50 mm.



## Suitable for corrugated steel roofs

In combination with the EPDM adapter, the mounting profiles for landscape orientation are also suitable for corrugated steel roofs.

## MyEnstall: access to all our digital services with just one account

We support you every step of the way, from planning to project completion and everything in between. [Want to know more?](#)

[Scan the QR code and create an account or go to \[my.enstall.com\]\(https://my.enstall.com\)](#)



Calculator



OnSite App



Enstall Academy