

149-147 90 graden specific configuration

Wall lamp | 136x115x100mm | white | 6W | 3000K | dim

Introduction

Purpose of this Document

This document provides information for 149-147 90 graden. During measurement, the product is used in a different mode where output power, colour temperature and/or beam angle are changed from factory standard. These adjustments can be made without altering the product and are designed to be set by the installer. In most cases, the options are set through switches on the product.

Results

Total input power	5.5 W
Correlated Colour Temperature	3206 K
Total lumen output	241 lm
Efficiency	44 lm/W

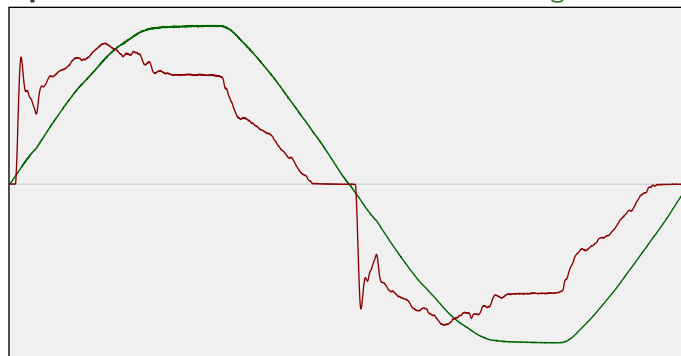
Electrical measurement details

Input Power

RMS Input voltage feed. V_{RMS}	229 V
RMS Input current feed. I_{RMS}	0.026 A
Total input power	5.5 W
Frequency of input power	50 Hz
Power factor	0.91
Displacement power factor	0.93
Total harmonic distortion of the current	17.75%
Total harmonic distortion of the voltage	2.59%

Input Power Curve

Voltage - Current



Efficiency

Radiated power efficiency: 13.4%



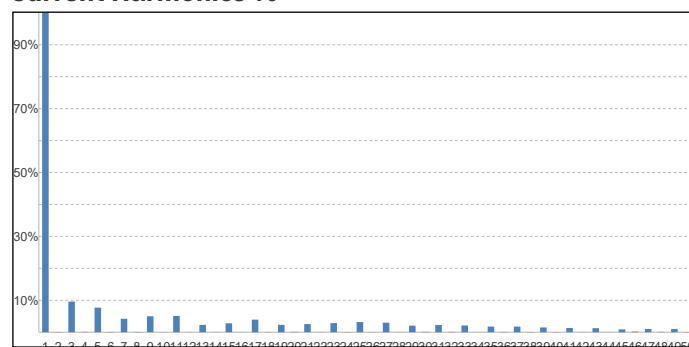
Lumen efficiency: 44 lm/W



Harmonics

3rd Harmonic	9.58%
5th Harmonic	7.69%
7th Harmonic	4.2%
9th Harmonic	4.99%
11th Harmonic	5.1%

Current Harmonics %



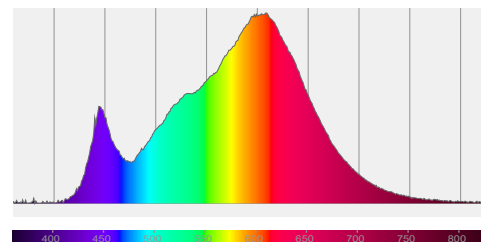
149-147 90 graden specific configuration

Colour measurement details

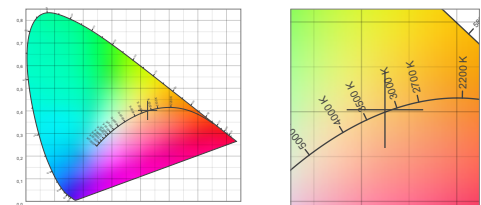
Total lumen output 241 lm
 Correlated Colour Temperature 3206 K
 Colour coordinates CIE 1931 (x;y) = (0.425;0.402)
 Colour deviation from BBL Duv = 0.0011

TM30-18 Colour Fidelity Index R_f 87.1
 TM30-18 Colour Gamut Index R_g 97.0
 Colour Rendering Index (Ra) CRI 84.9
 Colour Rendering Index. (red component) $R_9 = 12.5$

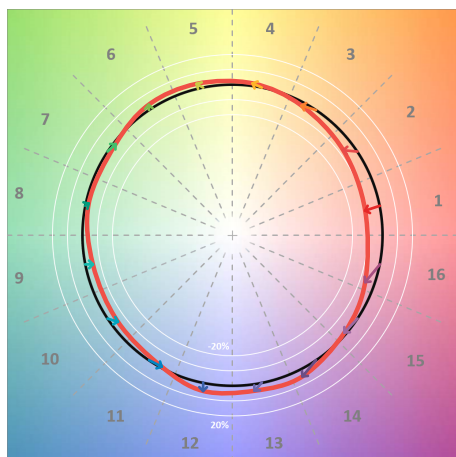
Colour Quality Scale CQS = 84.3
 Television Lighting Consistency Index TLCI = 72



Relative spectral power distribution



TM30 details

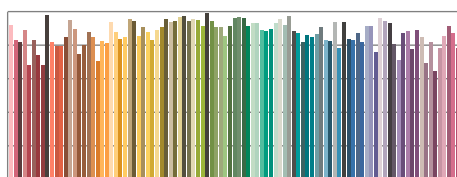


TM30 Colour vectors per hue bin

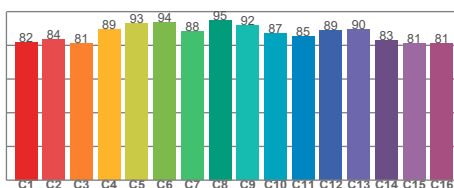


TM30 Colour distortion

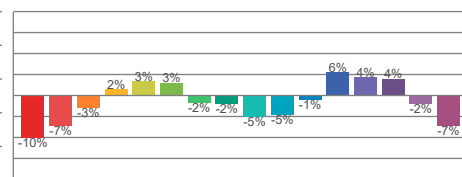
Hue Bin	R_f	Shifts (%)	
		Chroma	Hue
C1	82	-10%	-1%
C2	84	-7%	6%
C3	81	-3%	10%
C4	89	2%	7%
C5	93	3%	4%
C6	94	3%	-2%
C7	88	-2%	-7%
C8	95	-2%	-2%
C9	92	-5%	1%
C10	87	-5%	6%
C11	85	-1%	9%
C12	89	6%	1%
C13	90	4%	-6%
C14	83	4%	-13%
C15	81	-2%	-12%
C16	81	-7%	-13%



TM30-18 R_f -values per reference colour

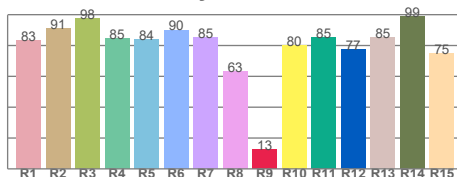


TM30-18 R_f -values per hue bin

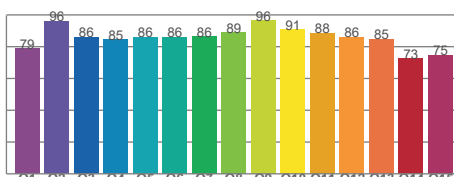


TM30 Chroma shift

Colour Quality details



Colour Rendering Index



Colour Quality Scale