



## Force H3X Energy Storage System Quick Start Guide (FH3X-8K/10K/12K/15K-HY-3P-10/15/20/25/30/35)

Information Version: 1.10  
5PMPA08-20017

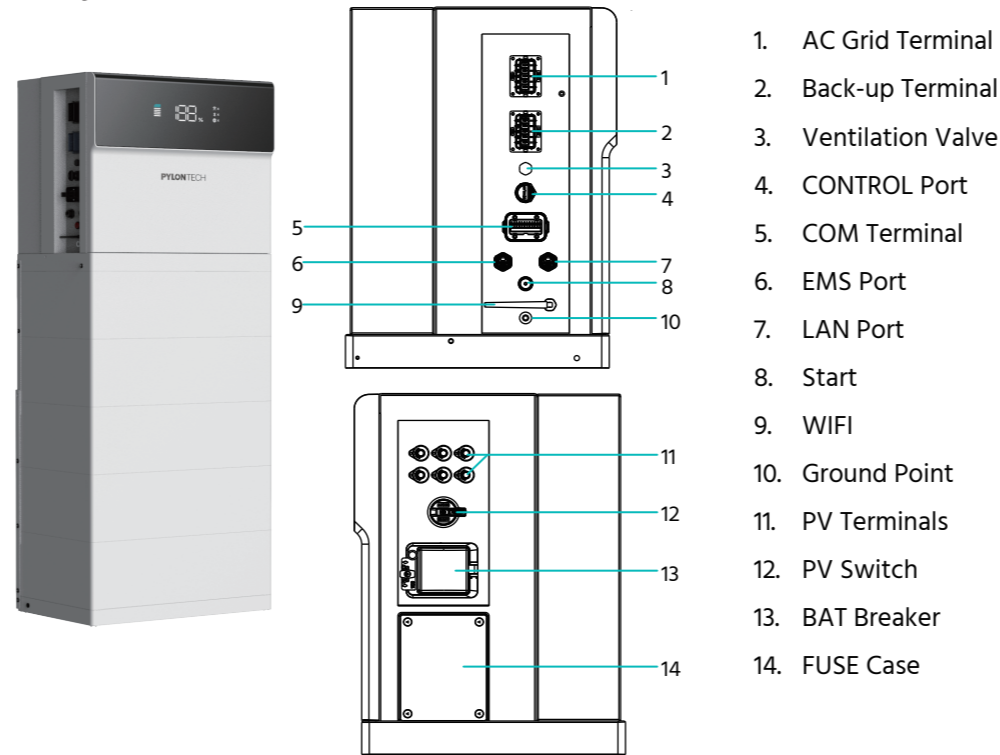
Pylon Technologies Co., Ltd  
No.300, Miaojiao Road, Kangqiao Town,  
Pudong New Area, Shanghai, China

service@pylontech.com.cn  
www.pylontech.com.cn  
+44-808-501-3666

### WARNING

Warning: Read the quick guide for product information and safety precautions before installing the product. The personal injury or property damage caused by failure to use the product in accordance with the this document and the user manual is not covered by the product warranty.

## 01 System Introduction



## 02 Packing List

Box 1-Power Controller	
	Power Controller × 1
	Base × 1
	Anti-toppling Bracket × 2
	Lifting Handle × 2
	Footrest × 4
	Metal Bracket × 6
	Multi-function Terminal × 1
	CT × 3
	Type A AC Back-up Connector × 1
	Type B AC Back-up Connector × 1
	Type A AC Grid Connector × 1
	Type B AC Grid Connector × 1
Box 2-Battery Module	
	Battery Module × 1
	Document × 1
	PV Connector Negative × 3
	PV Connector Positive × 3
	Heat Pump Connector × 1
	RJ45 Connector × 2
	Meter × 1
	Documents × 2
	Ground Screw M6×16 × 1
	Screw M4×8 × 18
	Expansion Bolt M8 × 6
	Step Screw M4×22 × 2
	PV Terminal Removing Tool × 1

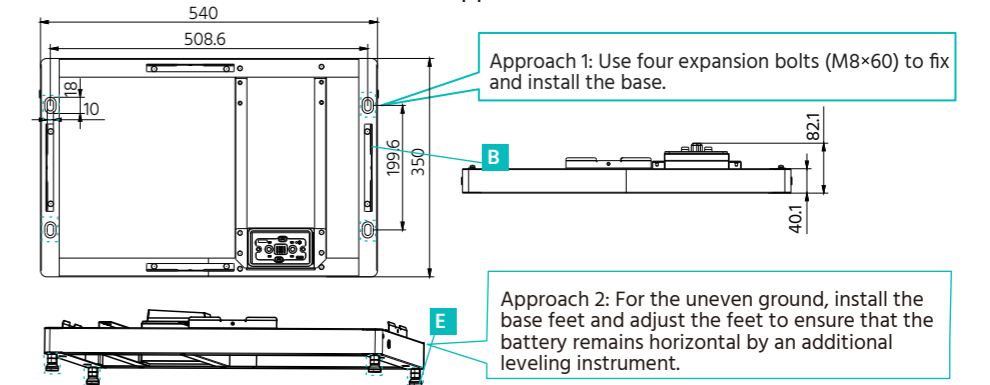
Use properly insulated tools to prevent accidental electric shock or short circuits. If insulated tools are not available, cover the entire exposed metal surfaces with available insulated alternatives, except their tips, with electrical tape. At least 2 personnel for the installation is recommended.

## 03 Installation Requirements

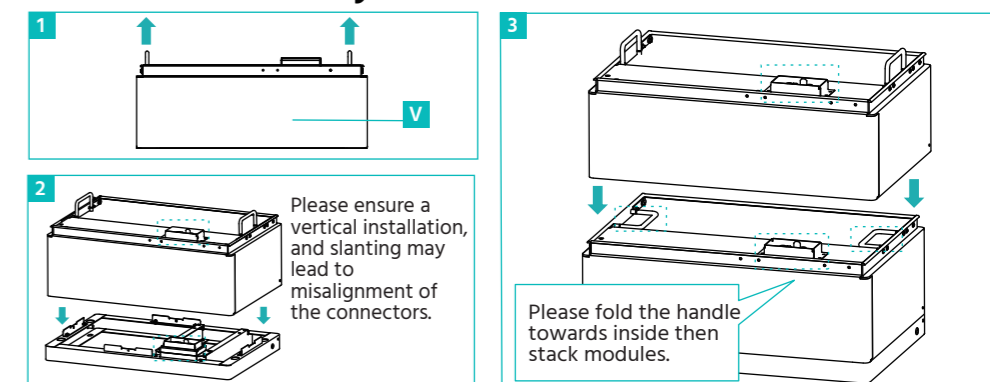
- FH3X system must not be immersed in water. The battery base cannot be exposed to rain or other water sources.
- The support surface should have sufficient load-bearing capacity to support a minimum weight of 300 kg. The system must be installed on a fixed and flat support surface.

## 04 Base Installation

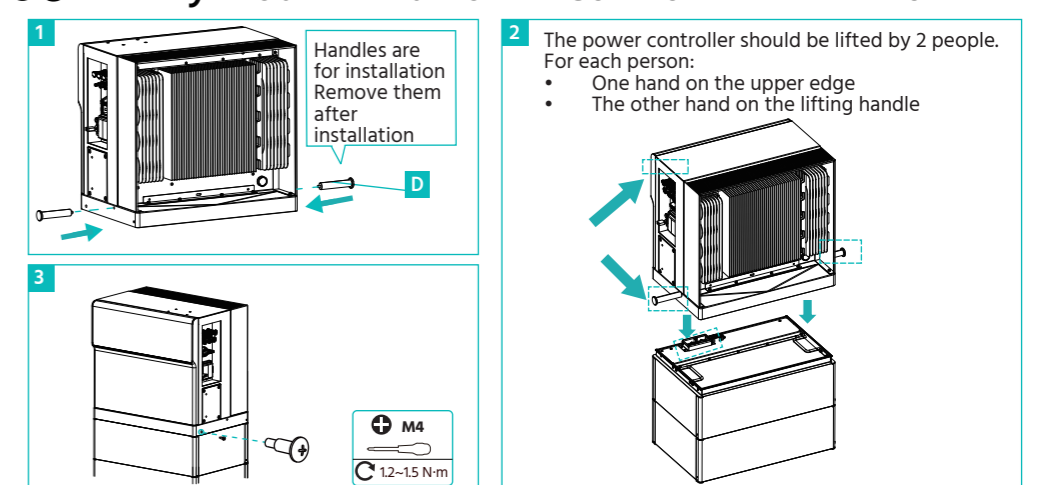
Two approaches available for this installation.



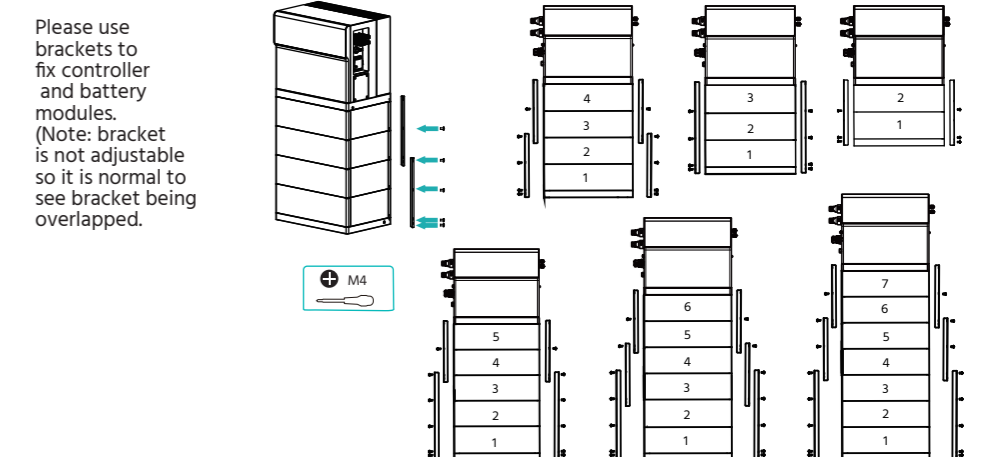
## 05 Base and Battery Module Installation



## 06 Battery Module and Power Controller Installation

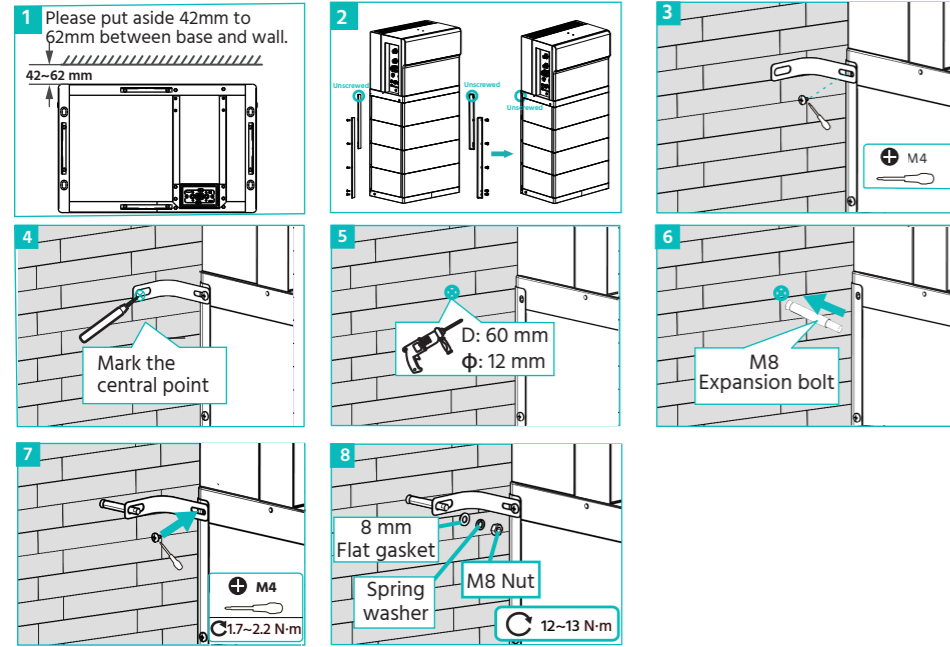


## 07 Metal Brackets Installation



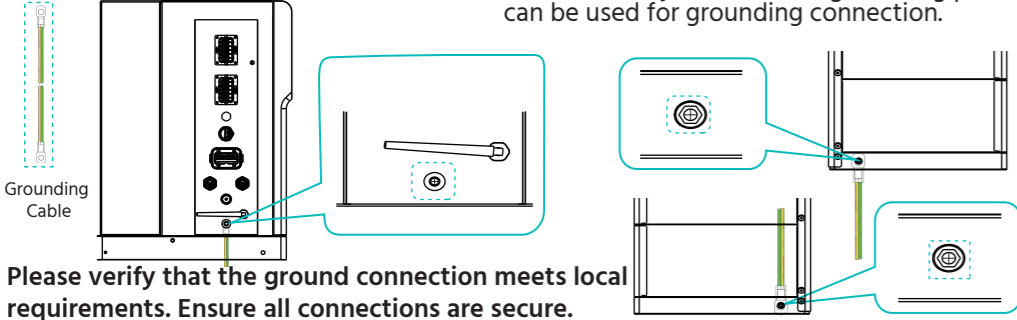
## 08 Anti-Topping Brackets Installation(Optional)

Please refer to the following steps if there is anti-topping installation:



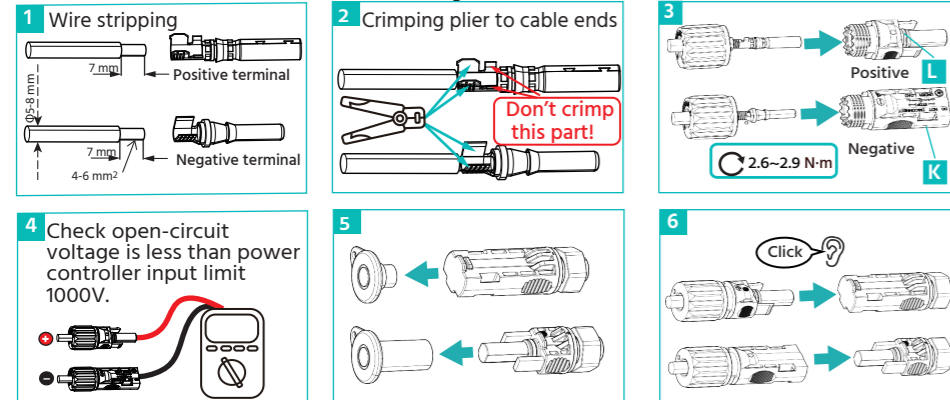
## 09 Grounding Connection

The system modules has 3 grounding points as follows. Any one of these grounding points can be used for grounding connection.

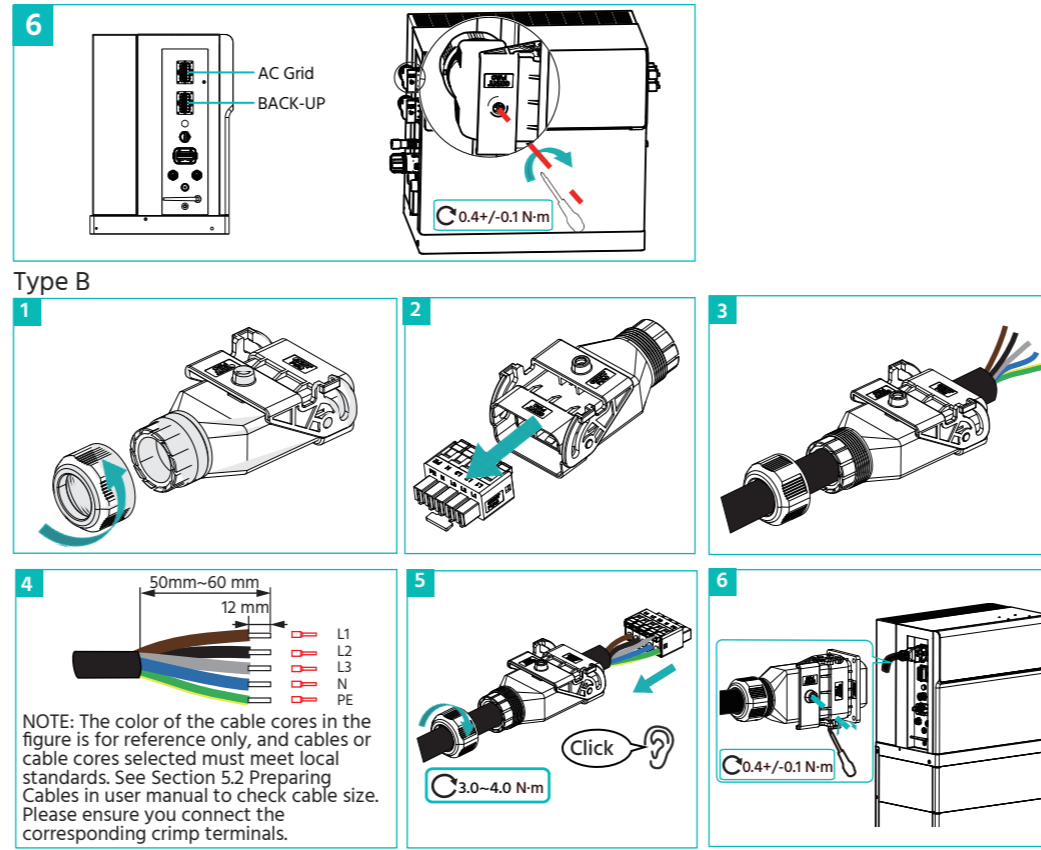
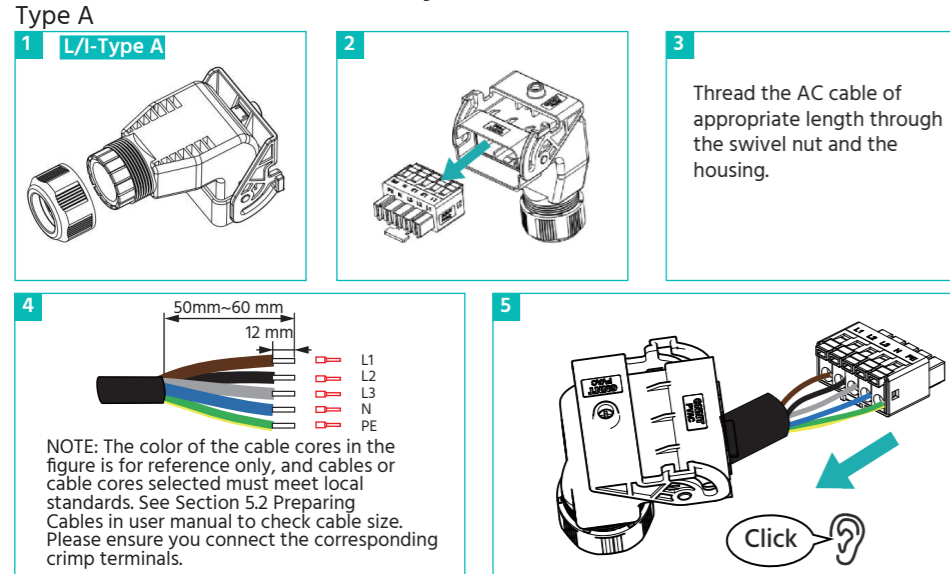


Please verify that the ground connection meets local requirements. Ensure all connections are secure.

## 10 PV Connector Assembly and Connection

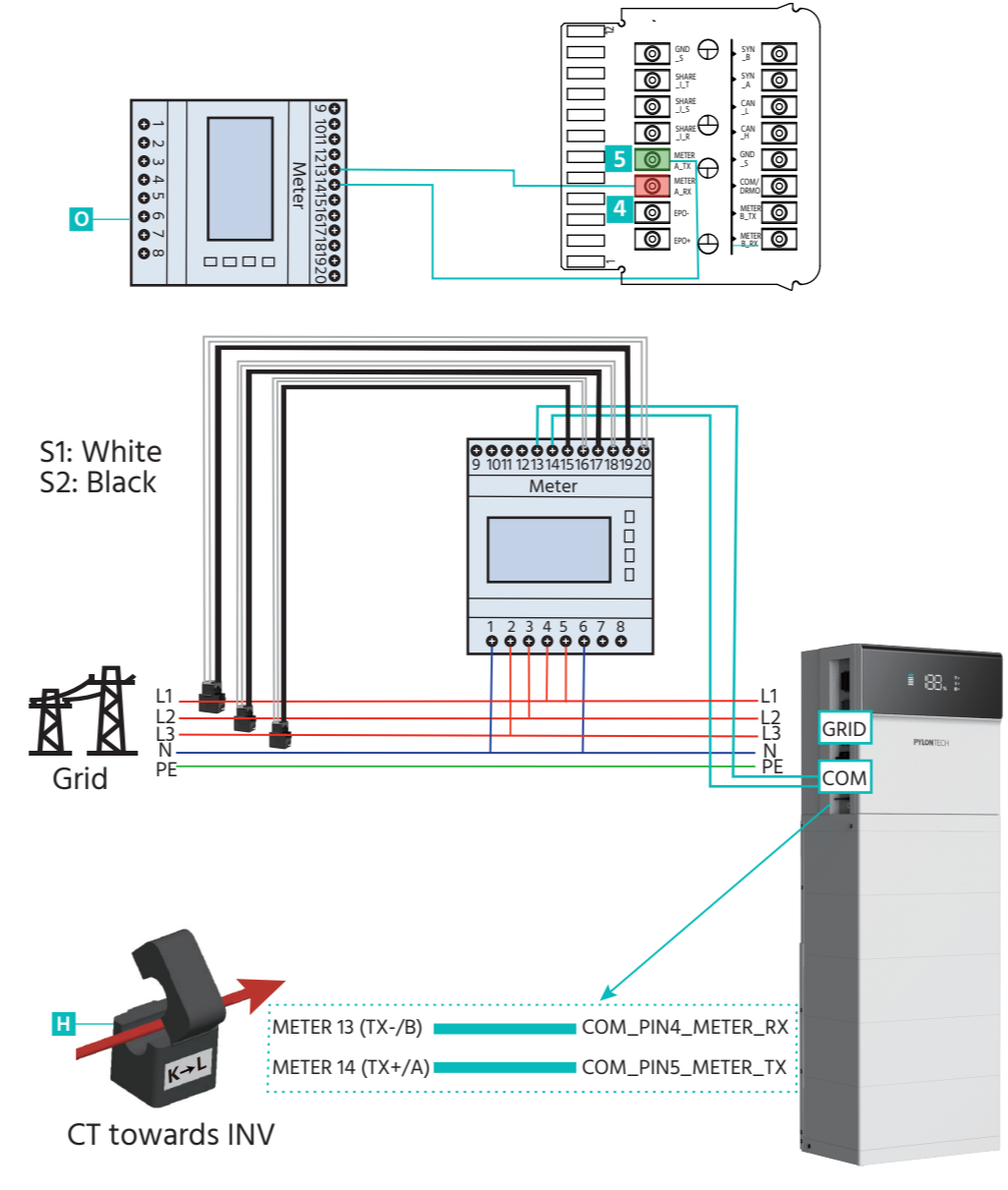


## 11 AC Connector Assembly and Connection

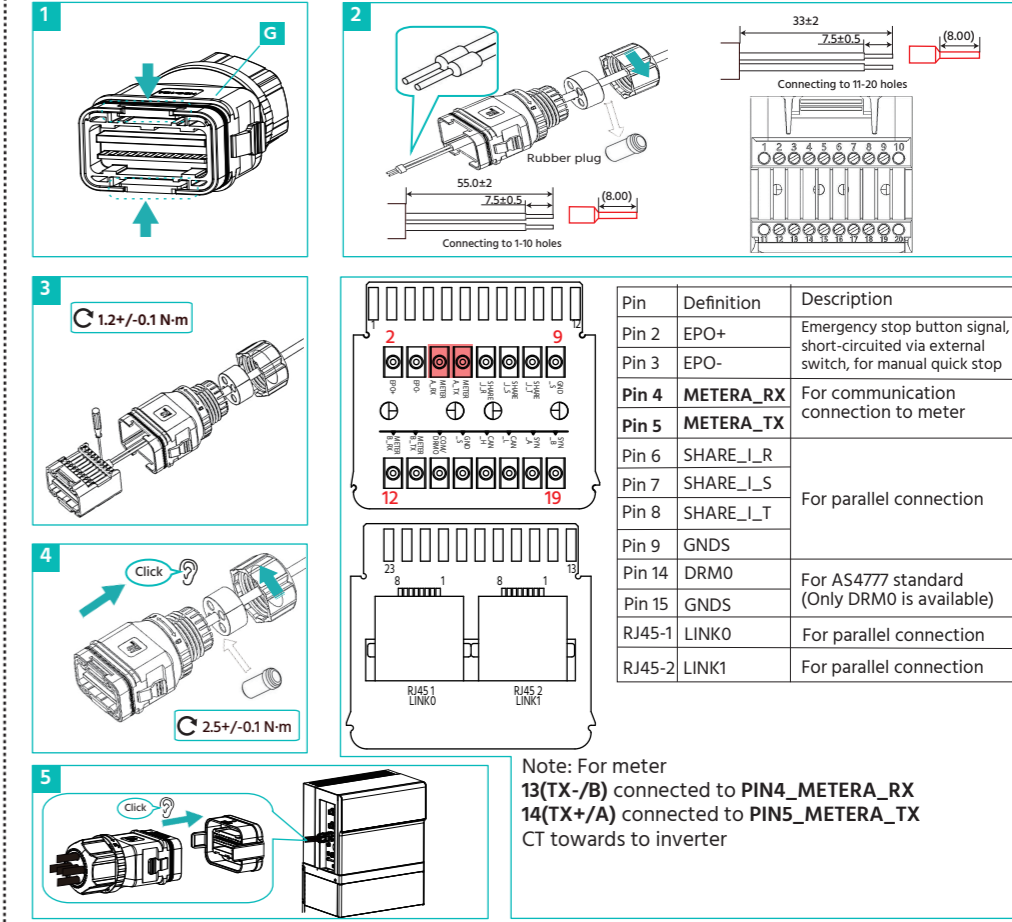


## 12 CT Connection

How to connect Meter to the Multi-function terminal (CT need to connect to the Meter)



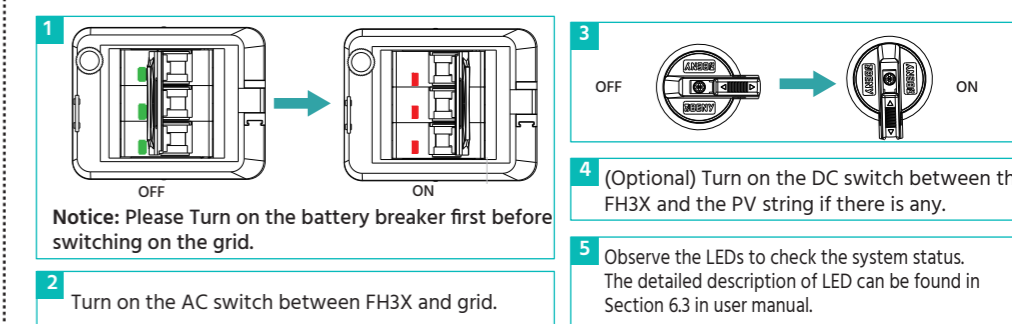
## 13 Communication Connector Assembly and Connection



Pin	Definition	Description
Pin 2	EPO+	Emergency stop button signal, short-circuited via external switch, for manual quick stop
Pin 3	EPO-	
Pin 4	METERA_RX	For communication connection to meter
Pin 5	METERA_TX	
Pin 6	SHARE_I_R	For parallel connection
Pin 7	SHARE_I_S	
Pin 8	SHARE_I_T	
Pin 9	GND5	
Pin 14	DRM0	For AS4777 standard (Only DRM0 is available)
Pin 15	GND5	
RJ45-1	LINK0	For parallel connection
RJ45-2	LINK1	For parallel connection

Note: For meter  
13(TX-/B) connected to PIN4\_METERA\_RX  
14(TX+/A) connected to PIN5\_METERA\_TX  
CT towards to inverter

## 14 System Turning On



## 15 Download App and Create Plant

