



## PHOTOMETRIC LIGHT REPORT

# Wall lamp | 136x115x100mm | white | 6W | 2700K | dim

Article number: 149-149



Go to the  
webshop  
of Tronix  
Lighting



**TRONIX**



149-149 Wall lamp | 136x115x100mm | white | 6W | 2700K | dim

## Introduction

### Purpose of this Document

This document provides accurate and objective photometric data for Tronix Lighting item 149-149. All information is based on actual measurements taken from standard production units. No modifications were made to enhance performance results. In some cases, minor adjustments—such as temporary removal of covers, cables, or mounting features—were necessary for testing purposes. These did not influence product performance.

### Test Methodology

Testing was conducted using randomly selected, unopened samples from regular inventory. All tests comply with the LM-79-19 standard, the recognized method for photometric and electrical measurements of LED and OLED luminaires. This standard, an update of IES LM-79-2008, outlines environmental test conditions, stabilization procedures, measurement methods, and approved instruments. It uses absolute photometry, meaning results directly reflect the performance of the tested product, without comparison to rated lamp standards.

### Product 149-149 was tested using:

- A photogoniometer to measure luminous intensity distribution at various angles
- An integrating sphere to determine total luminous flux and colour characteristics

### Compliance & Certification

Item 149-149 meets the requirements of the following EU directives. Tronix Lighting certifies that all relevant tests were executed in accordance with the applicable standards, and the CE mark is applied accordingly:

- General Product Safety – Directive 2023/988/EC
- Low Voltage Directive (LVD) – Directive 2014/35/EU
- Electromagnetic Compatibility (EMC) – Directive 2004/108/EC
- Ecodesign – Directive 2009/125/EC
- RoHS 3 – Directive 2011/65/EU + Amendment 2015/863/EU

### Recycling & Sustainability

Tronix Lighting is affiliated with national recycling systems for electrical and electronic waste. The luminaire is over 90% recyclable when disposed of as electronic waste at end of life. In addition, Tronix Lighting participates in national packaging recycling schemes, ensuring full compliance with both the WEEE and packaging directives.



149-149 Wall lamp | 136x115x100mm | white | 6W | 2700K | dim

### Laboratory and equipment

Laboratory owner and location	Tronix Lighting BV. Uden. The Netherlands
Gonio spectrometer system and type	Viso Systems Type C. horizontal
Spectrometer manufacturer and model	(Gonio) Ocean Optics STS VIS (Sphere) Admesy HERA VIS 380–780nm
Flicker meter manufacturer and model	Viso Systems LabFlicker
Oscilloscope manufacturer and model	Tektronix MDO3024 oscilloscope (4 Channels. 200 MHz)
Power meter manufacturer and model	Vitretek PA900 Precision Multi-Channel Harmonic Power Analyzer
Power source manufacturer and model	(DC) Keithley Source Measure Unit SMU-2420 3A DC Source Meter (AC) Chroma 61601 AC Source
Datalogger Manufacturer and Model	Omega 8-Channel Thermocouple Thermometer/Data Logger

### Measurement conditions gonio spectrometer

Number of C-planes and Resolution	2 planes – 180°
γ (gamma)-Resolution	1°
Test Distance	1.14 m
Room Temperature and Humidity	22°C +/- 10% – RH 50% +/- 20%
Input Power. Power and Displacement Factors	6.2 W – PF 0.95 – DPF 0.97
Frequency of Input Power	50 Hz
Warm-up Time and Variation	Lamp stabilized in 15 min 2 sec --1.9%

### Tested light source

Manufacturer and Order Code	Tronix Lighting – 149-149
Product Description	Wall lamp   136x115x100mm   white   6W   2700K   dim

### Main Light Measurement Results

Output – Total Lumen (Up% / Down%)	252 lm – 49.36% / 50.64%
Efficiency	40 lm/W
Energy efficiency class	G
Peak Intensity and Beam Angle	62.1 cd – 360°
Correlated Colour Temperature	CCT = 2835 K
Colour Shift. CIE duv	Duv 0.0012
Colour Rendering Index	CRI 83.4
Colour Rendering TM30-18	R <sub>f</sub> 86.7 – R <sub>g</sub> 95.1
Television Lighting Consistency Index	TLCI = 70
Flicker	SVM 0 – PstLM 0.02



149-149 Wall lamp | 136x115x100mm | white | 6W | 2700K | dim

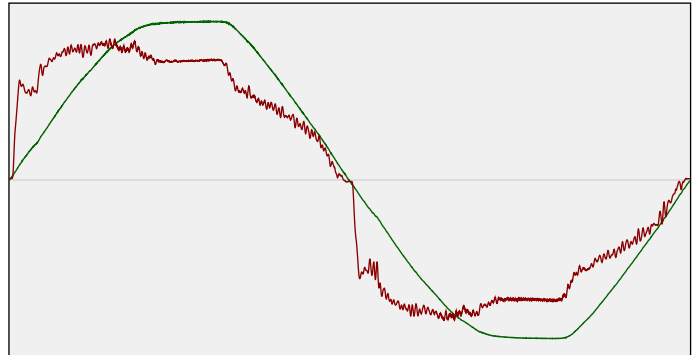
Electrical measurement details

**Input Power**

RMS Input voltage feed. $V_{RMS}$	230 V
RMS Input current feed. $I_{RMS}$	0.029 A
Total input power	6.2 W
Frequency of input power	50 Hz
Power factor	0.95
Displacement power factor	0.97
Total harmonic distortion of the current	20.95%
Total harmonic distortion of the voltage	2.73%

Input Power Curve

Voltage - Current



**Efficiency**

Radiated power efficiency: 12.4%



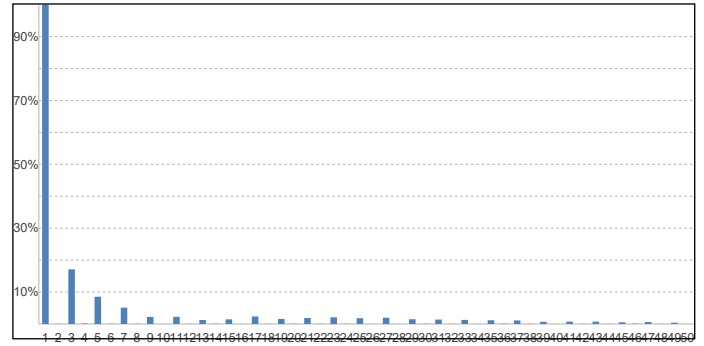
Lumen efficiency: 40 lm/W



**Harmonics**

3rd Harmonic	17.1%
5th Harmonic	8.53%
7th Harmonic	5.11%
9th Harmonic	2.21%
11th Harmonic	2.24%

Current Harmonics %



Stabilization Details

**Warm-up Conditions**

Stable period	15 min	CCT start	2835 K
Stable change max	2.0%	CCT shift	+1 K
Minimum warm-up time	15 min	CCT end	2835 K

**Colour temperature change during warm-up**

**Warm-up Results**

Total warmup time	Lamp stabilized in 15 min 2 sec	Output start	256 lm
Warmup variation	-1.9%	Output change	-4 lm
		Output end	252 lm

**Output intensity change during warm-up**



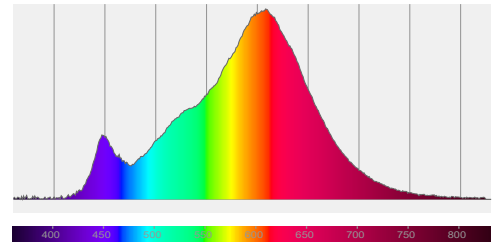
149-149 Wall lamp | 136x115x100mm | white | 6W | 2700K | dim

Colour measurement details

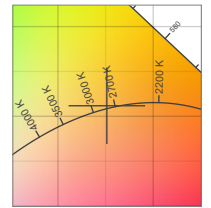
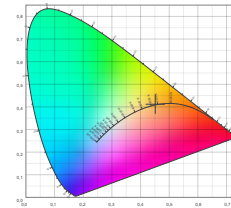
Total lumen output 252 lm  
 Correlated Colour Temperature 2835 K  
 Colour coordinates CIE 1931 (x;y) = (0.451;0.412)  
 Colour deviation from BBL Duv = 0.0012

TM30-18 Colour Fidelity Index R<sub>f</sub> 86.7  
 TM30-18 Colour Gamut Index R<sub>g</sub> 95.1  
 Colour Rendering Index (Ra) CRI 83.4  
 Colour Rendering Index. (red component) R9 = 7.4

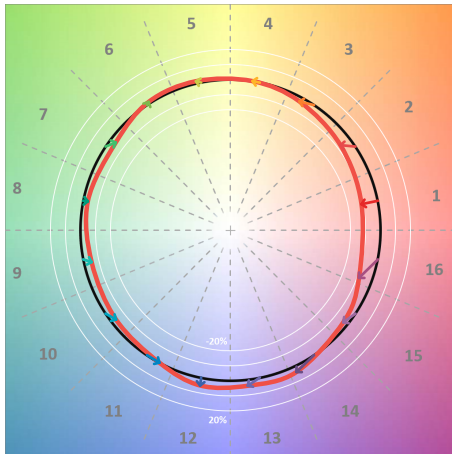
Colour Quality Scale CQS = 83.4  
 Television Lighting Consistency Index TLCI = 70



Relative spectral power distribution



TM30 details

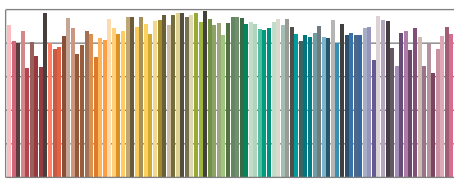


TM30 Colour vectors per hue bin

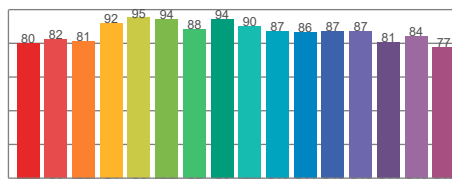


TM30 Colour distortion

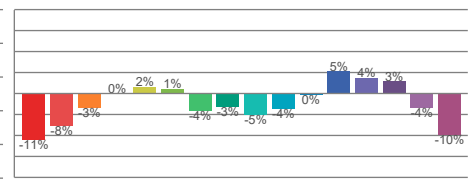
Hue Bin	R <sub>f</sub>	Shifts (%)	
		Chroma	Hue
C1	80	-11%	0%
C2	82	-8%	6%
C3	81	-3%	9%
C4	92	0%	5%
C5	95	2%	3%
C6	94	1%	-2%
C7	88	-4%	-6%
C8	94	-3%	0%
C9	90	-5%	3%
C10	87	-4%	7%
C11	86	0%	10%
C12	87	5%	0%
C13	87	4%	-9%
C14	81	3%	-16%
C15	84	-4%	-9%
C16	77	-10%	-14%



TM30-18 R<sub>f</sub>-values per reference colour

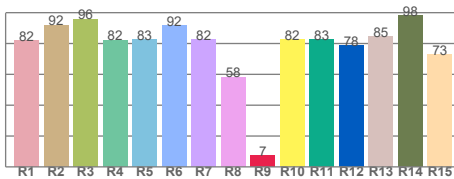


TM30-18 R<sub>f</sub>-values per hue bin

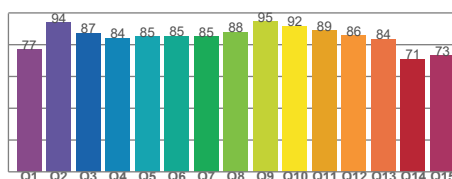


TM30 Chroma shift

Colour Quality details



Colour Rendering Index



Colour Quality Scale

Document revision date: 1-7-2025 Measurement serial: VFR-250508-7247-SW



149-149 Wall lamp | 136x115x100mm | white | 6W | 2700K | dim

Flicker / temporal light artefacts details

**Measurement conditions**

Flicker meter type	Viso Systems LabFlicker
Flicker/TLA sample rate	20000 samples/s
Measurement time	5x 180 seconds (15 minutes) for PstLM. 1.2 sec for all other indices

**Flicker indices according to Illuminating Engineering Society (IES)**

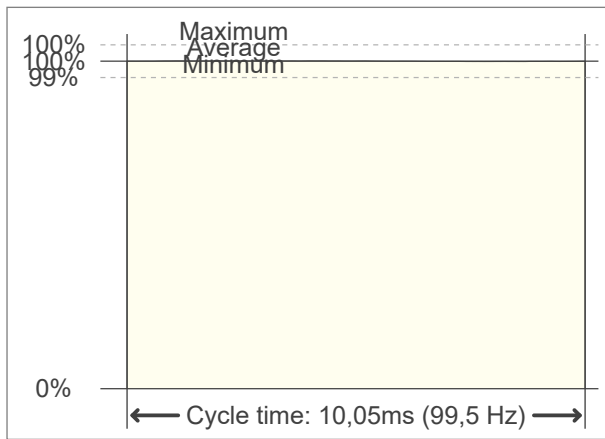
Flicker frequency	99.5 Hz
Percent flicker	0.16 %
Flicker index	0

**TLA indices (according IEC TR 61547-1, EN 61000-3-3 and EN 61000-4-15)**

An LED luminaire is considered flicker-free if the SVM value is  $\leq 0.4$  and if the PstLM value is  $\leq 1.0$

PstLM value (F < 80 Hz)	0.02
SVM value (80 < F < 2000 Hz)	0

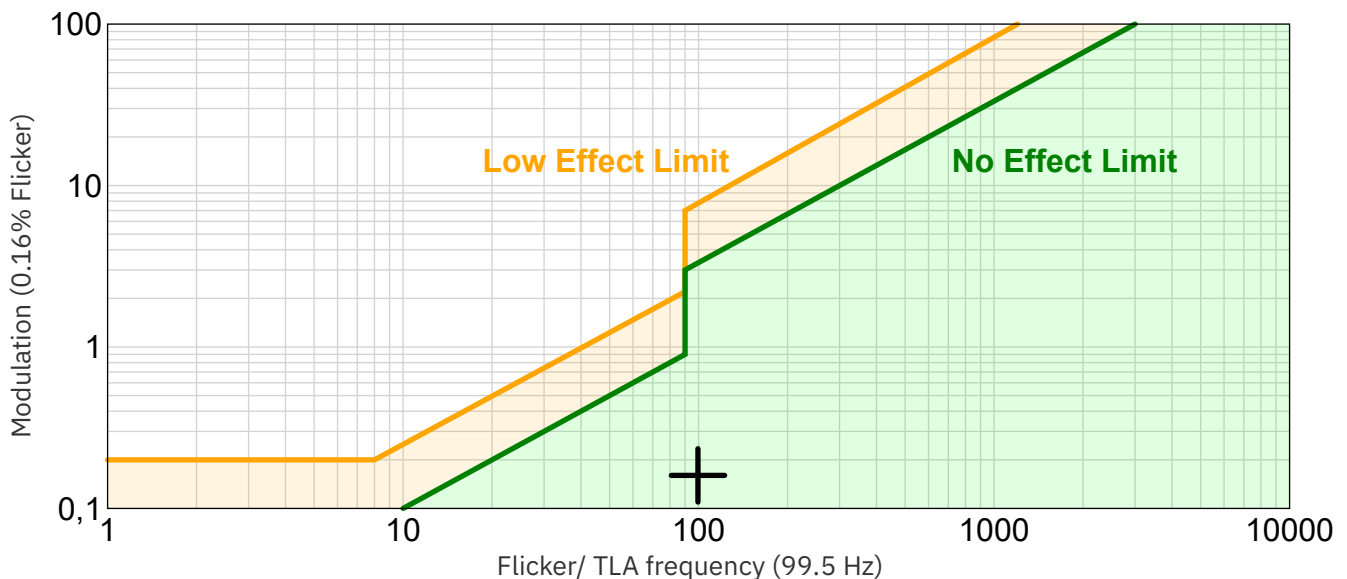
**Flicker frame (one flicker period in time domain)**



**Flicker FFT (flicker curve in frequency domain)**



**IEEE 1789-2015 Lighting Flicker Risk Zones**



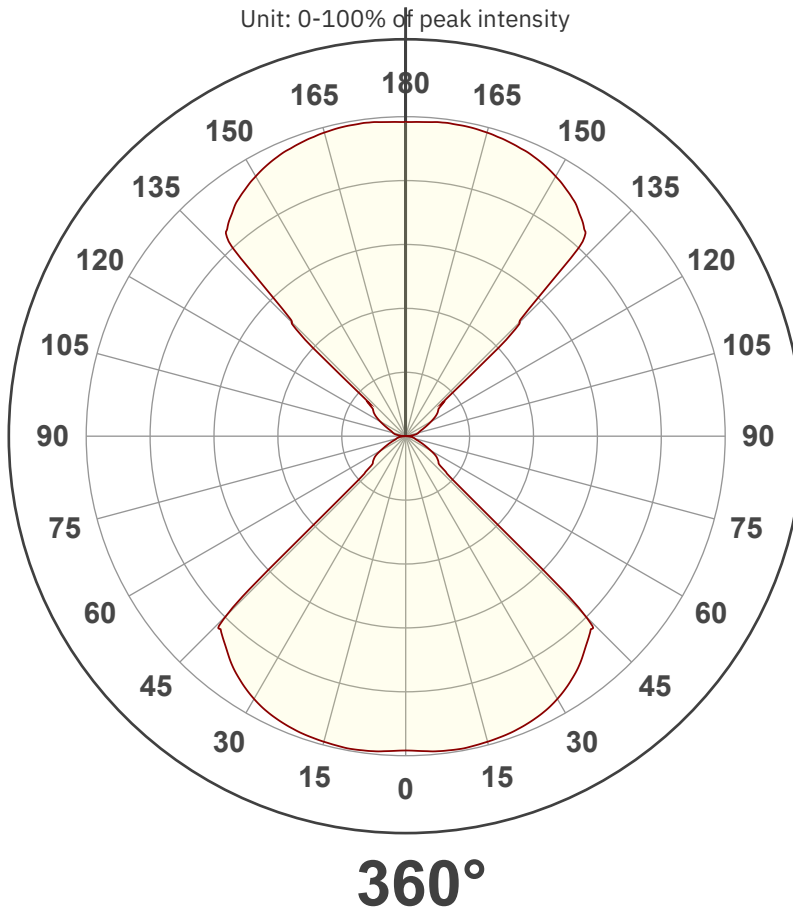
Document revision date: 1-7-2025 Measurement serial: VFR-250508-7247-SW



149-149 Wall lamp | 136x115x100mm | white | 6W | 2700K | dim

Beam angle

**Luminous Intensity diagram**



**Main Values**

Output (total Lumen)	252 lm
Lumen Up/Down	49.36% / 50.64%
Peak Intensity	62.1 cd
Beam Angle (50%)	360°
Beam Angle (90%)	360°
Beam Angle (10%)	360°

**Cut-off Angle**

Average 2.5%	360°
--------------	------

**Field Angle**

Average 10%	360°
-------------	------

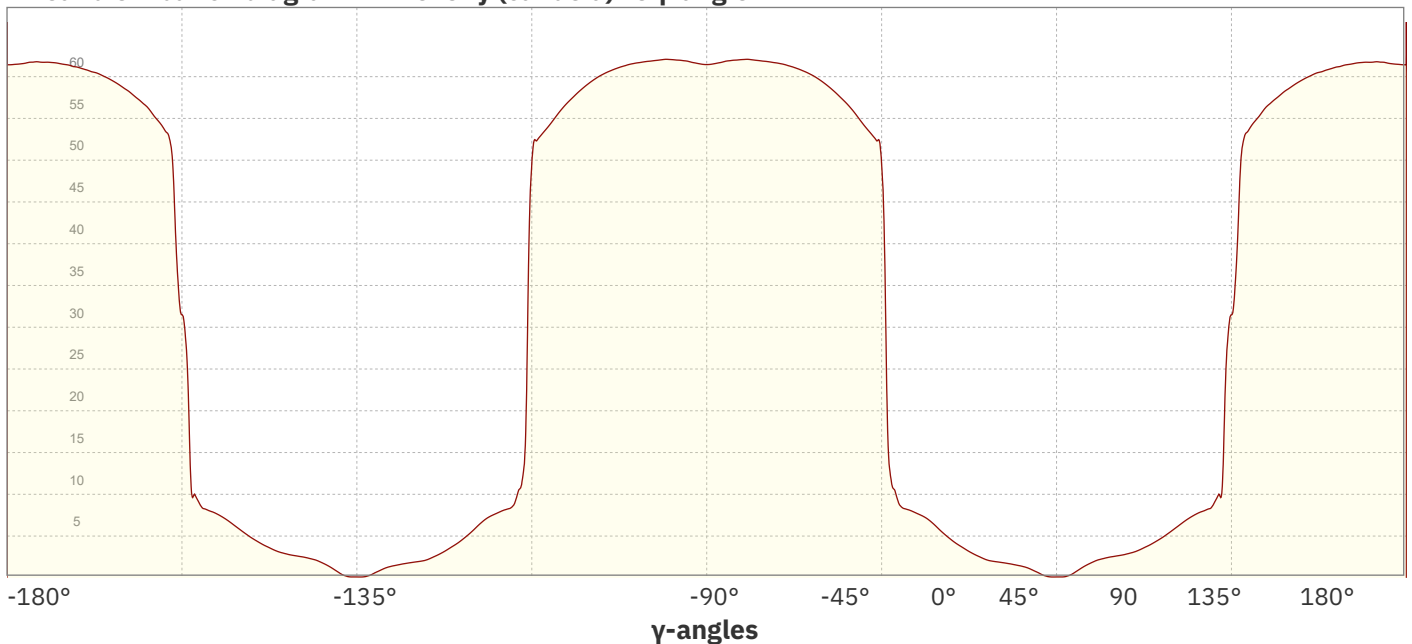
**Intensity Ratio**

In 120° cone	48.0%
In 90° cone	42.4%

**C planes**

- C000-C180
- C090-C270

**Linear distribution diagram - Intensity (candela) vs  $\gamma$ -angle**

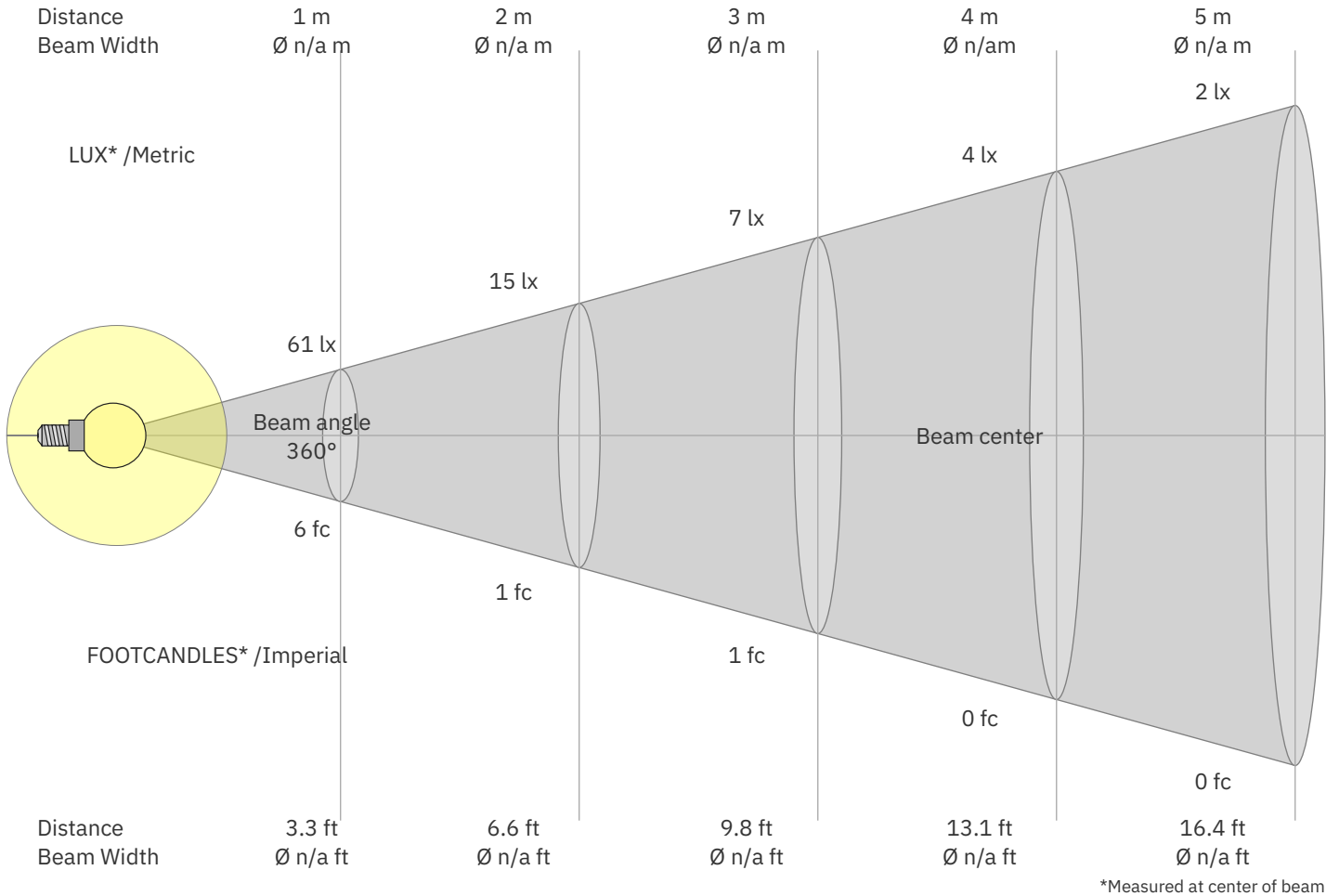


Document revision date: 1-7-2025 Measurement serial: VFR-250508-7247-SW



149-149 Wall lamp | 136x115x100mm | white | 6W | 2700K | dim

Beam Details



\*Measured at center of beam

Beam intensities from 1 – 20 m

1	2	3	4	5	6	7	8	9	10	11	12	13	14	15	16	17	18	19	20	m
3.3	6.6	9.8	13.1	16.4	19.7	23	26.2	29.5	32.8	36.1	39.4	42.7	45.9	49.2	52.5	55.8	59.1	62.3	65.6	ft
61	15	7	4	2	2	1	1	1	1	1	0	0	0	0	0	0	0	0	0	lux
5.7	1.4	0.6	0.4	0.2	0.2	0.1	0.1	0.1	0.1	0	0	0	0	0	0	0	0	0	0	fc

Intensities in 0° c-plane

0°	9°	18°	27°	36°	45°	54°	63°	72°	81°	90°	99°	108°	117°	126°	135°	144°	153°	162°	171°	γ
61.4	62.0	61.6	60.2	56.8	48.3	7.7	4.5	2.2	1.4	0.1	1.8	2.8	4.8	7.6	31.5	56.4	59.5	61.1	61.7	cd
100%	101%	100%	98%	92%	79%	13%	7%	4%	2%	0%	3%	5%	8%	12%	51%	92%	97%	100%	100%	of 0°val

Intensities in 90° c-plane

0°	9°	18°	27°	36°	45°	54°	63°	72°	81°	90°	99°	108°	117°	126°	135°	144°	153°	162°	171°	γ
61.4	62.0	61.6	60.2	56.8	48.3	7.7	4.5	2.2	1.4	0.1	1.8	2.8	4.8	7.6	31.5	56.4	59.5	61.1	61.7	cd
100%	101%	100%	98%	92%	79%	13%	7%	4%	2%	0%	3%	5%	8%	12%	51%	92%	97%	100%	100%	of 0°val

Intensities in 180° c-plane

0°	9°	18°	27°	36°	45°	54°	63°	72°	81°	90°	99°	108°	117°	126°	135°	144°	153°	162°	171°	γ
61.4	62.0	61.6	60.2	56.8	48.3	7.7	4.5	2.2	1.4	0.1	1.8	2.8	4.8	7.6	31.5	56.4	59.5	61.1	61.7	cd
100%	101%	100%	98%	92%	79%	13%	7%	4%	2%	0%	3%	5%	8%	12%	51%	92%	97%	100%	100%	of 0°val

Intensities in 270° c-plane

0°	9°	18°	27°	36°	45°	54°	63°	72°	81°	90°	99°	108°	117°	126°	135°	144°	153°	162°	171°	γ
61.4	62.0	61.6	60.2	56.8	48.3	7.7	4.5	2.2	1.4	0.1	1.8	2.8	4.8	7.6	31.5	56.4	59.5	61.1	61.7	cd
100%	101%	100%	98%	92%	79%	13%	7%	4%	2%	0%	3%	5%	8%	12%	51%	92%	97%	100%	100%	of 0°val

Document revision date: 1-7-2025 Measurement serial: VFR-250508-7247-SW





149-149 Wall lamp | 136x115x100mm | white | 6W | 2700K | dim

Light Planning – UGR table

Uncorrected, comprehensive UGR table according to CIE 117-1995

Reflectances		70	70	50	50	30	70	70	50	50	30
ρ Ceiling		70	70	50	50	30	70	70	50	50	30
ρ Walls		50	30	50	30	30	50	30	50	30	30
ρ Floor		20	20	20	20	20	20	20	20	20	20
Room size		Viewed Crosswise					Viewed Endwise				
H = mounting height above eye level		(Viewing direction orthogonal to lamp length axis)					(Viewing direction parallel to lamp length axis)				
X	Y										
2H 2H		11.3	12.0	12.2	12.8	13.9	11.3	12.0	12.2	12.8	13.9
3H		11.2	11.9	12.2	12.7	13.8	11.2	11.9	12.2	12.7	13.8
4H		11.2	11.8	12.2	12.7	13.8	11.2	11.8	12.2	12.7	13.8
6H		11.3	11.8	12.2	12.7	13.8	11.3	11.8	12.2	12.7	13.8
8H		11.3	11.9	12.2	12.8	13.9	11.3	11.9	12.2	12.8	13.9
12H		11.3	12.0	12.2	12.8	13.9	11.3	12.0	12.2	12.8	13.9
4H 2H		11.0	11.6	12.0	12.5	13.6	11.0	11.6	12.0	12.5	13.6
3H		11.1	11.8	12.0	12.6	13.7	11.1	11.8	12.0	12.6	13.7
4H		11.1	12.0	12.1	12.6	13.7	11.1	12.0	12.1	12.6	13.7
6H		11.2	11.7	12.2	12.6	13.7	11.2	11.7	12.2	12.6	13.7
8H		11.3	11.7	12.3	12.6	13.7	11.3	11.7	12.3	12.6	13.7
12H		11.3	11.6	12.3	12.6	13.7	11.3	11.6	12.3	12.6	13.7
8H 4H		11.0	11.4	12.0	12.3	13.4	11.0	11.4	12.0	12.3	13.4
6H		11.2	11.5	12.2	12.5	13.6	11.2	11.5	12.2	12.5	13.6
8H		11.4	11.6	12.4	12.6	13.8	11.4	11.6	12.4	12.6	13.8
12H		11.5	11.6	12.5	12.7	13.8	11.5	11.6	12.5	12.7	13.8
12H 4H		11.0	11.2	11.9	12.2	13.3	11.0	11.2	11.9	12.2	13.3
6H		11.2	11.4	12.2	12.5	13.7	11.2	11.4	12.2	12.5	13.7
8H		11.4	11.6	12.4	12.6	13.7	11.4	11.6	12.4	12.6	13.7

Variations with the observer position for the luminaire spacings. S:

S = 1.0H	2.1 / -2.3	2.1 / -2.3
S = 1.5H	4.1 / -2.8	4.1 / -2.8
S = 2.0H	5.8 / -3.2	5.8 / -3.2

Coefficients of Utilization

Ceiling reflectance	80	70			50			30			10			0		
Wall reflectance	70	50	30	10	70	50	30	10	50	30	10	50	30	10	0	
Floor reflectance	20	20	20	20	20	20	20	20	20	20	20	20	20	20	0	
RCR	(RCR: Room Cavity Ratio)															
	Room Values are expressed as percentage of Lumen delivered to the task surface															
0	107	107	107	107	99	99	99	99	84	84	70	70	70	57	57	51
1	99	95	92	89	92	88	86	83	75	73	71	63	62	61	52	51
2	92	85	80	75	85	79	74	70	68	64	61	57	55	53	48	46
3	84	76	69	64	78	71	65	61	61	57	53	52	49	46	44	42
4	78	68	61	56	72	64	57	53	55	50	47	47	44	41	40	37
5	72	61	54	49	67	57	51	46	50	45	41	43	39	36	37	34
6	67	56	48	43	62	52	45	41	45	40	37	39	35	32	34	31
7	62	51	43	38	57	47	41	36	42	36	33	36	32	29	31	28
8	58	46	39	34	53	43	37	32	38	33	29	33	29	26	29	26
9	54	42	35	30	50	40	33	29	35	30	26	31	27	24	26	23
10	50	39	32	27	47	37	30	26	32	27	24	28	24	22	25	22