

## Features

• Insaver Slim is a ceiling recessed LED downlight (IP44 from the front), Die-cast aluminium body, loop in loop out connector for quick installation, Non dimmable LED driver, 3000K; UGR <19 with shallow product depth 60mm. The range features a multipower functionality where the luminous flux of the luminaire can be tailored to local needs by only setting a quick selector switch on the driver. 8 steps available with adjustable lumen output of 730 – 2350lm at 3000K . Meets TP(a) requirements.

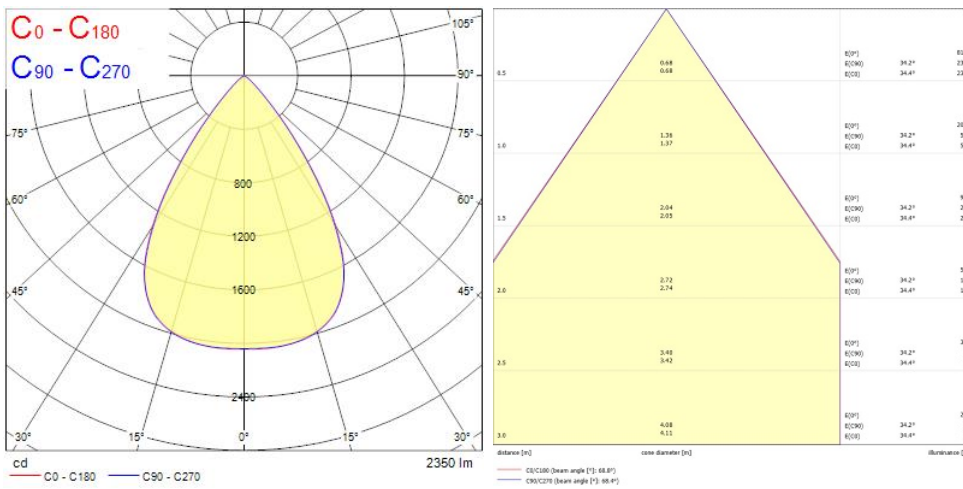
## Product Overview

Product name	Insaver Slim IP44 225 Multi730-2350 830
Technology	LED
Cap/Base	N/A
Housing	Aluminium
Mount	Ceiling recessed mounting
E-number FI	4278538
Fixture luminous flux (lm)	2350
Luminaire efficacy (lm/W)	124
Colour temperature (K)	3000
Light colour	Warm White
CRI (Ra)	80
Colour Variation Initial (SDCM)	3
Glare control	< 19
Photobiological Risk Group	RG1
Total power consumption (W)	19
Electrical protection	Class II
Control gear type	LED driver constant current
LED Flickering Rate	Ultra low (5% or less)
Housing colour	RAL 9010 - Pure white

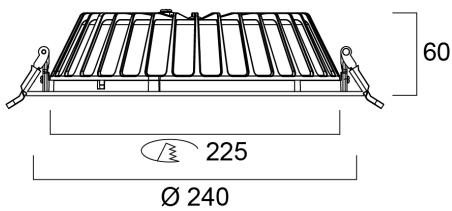
## Insaver Slim IP44 225 Multi730-2350 830 0030548

IP rating	IP44/20
IK rating	IK07
Product EAN number	5410288305486
Warranty	5 years

### Photometry



### Technical drawings



### Data table

#### GENERAL DATA

Product name	Insaver Slim IP44 225 Multi730-2350 830
Technology	LED
Cap/Base	N/A
Housing	Aluminium
Mount	Ceiling recessed mounting
Operating temperature range (°C)	-20°C...+40°C
E-number FI	4278538
Warranty	5 years

#### OPTICAL DATA

Fixture luminous flux (lm)	2350
Luminaire efficacy (lm/W)	124
Colour temperature (K)	3000
Light colour	Warm White
CRI (Ra)	80
Colour Variation Initial (SDCM)	3
Glare control	< 19
Photobiological Risk Group	RG1

#### ELECTRICAL DATA

Total power consumption (W)	19
Primary Supply/Product voltage - min (V)	220
Lamp power factor	0.9
Electrical protection	Class II
Control gear required	No
Control gear type	LED driver constant current
Drive current (mA)	500
Inrush Current (A)	10
Inrush Duration (µs)	100
Glow Wire Test (°C)	850

## Insaver Slim IP44 225 Multi730-2350 830 0030548

Energy Efficiency Class (A->G) of contained light source	D
Nominal Frequency (Hz)	50/60Hz
LED Flickering Rate	Ultra low (5% or less)
Max. products per 10A C Breaker	32
Connectable conductor cross section - Min (mm <sup>2</sup> )	0.75
Connectable conductor cross section - Max (mm <sup>2</sup> )	1.5

### LIFETIME DATA

Lifespan L70 B50	100000
Lifespan L80 B20	88000
Lifespan L80 B10	80000
Lifespan L90 B10	39000

### PHYSICAL DATA

Housing colour	RAL 9010 - Pure white
IP rating	IP44/20
IK rating	IK07
Diffuser finish	Other
Diffuser material	None
Nominal Product Diameter (mm)	240
Weight (kg)	0.846

### PACKAGING

Single packaging type	Carton
Product EAN number	5410288305486
Packaging single width (cm)	25.5
Packaging single depth (cm)	8.0
DUN14 (outer)	15410288305483
Packaging outer length / height (cm)	53.0

### SAFETY DATA

Insaver Slim IP44 225 Multi730-2350 830  
**0030548**

---

<b>Optimal operating condition (°C)</b>	-20-40
<b>Special purpose lamp</b>	No
<b>Dry applications use only</b>	No
<b>Suitable for household illumination</b>	No