

35 816 970 90 Product version from 3/16/2015



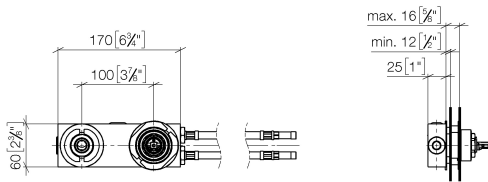
- 2x female thread 1/2" connections
- 2x 1/2" x 1000mm high pressure hose
- 1x female thread 1/2" outlet for wall spout
- cartridge
- gauge 100 mm
- lead-free

Recommended combination for this fitting:Rear walls with- wall thickness: 12-16 mm- spout hole diameter: 40 mm- mixer hole diameter: 58 mm- clear width behind wall: 25 mm

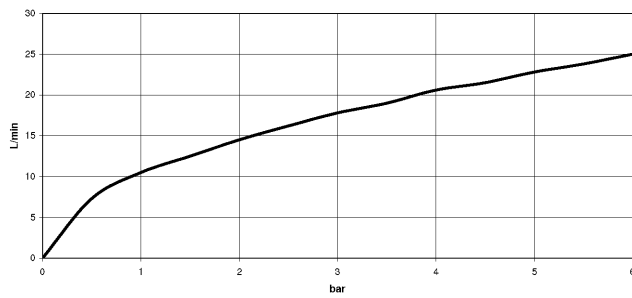
NOTE:Not suitable for concealed installation.Connection by means of angle valves, mounted with screws to back wall.

35 816 970 90 Product version from 3/16/2015

mm [inches]

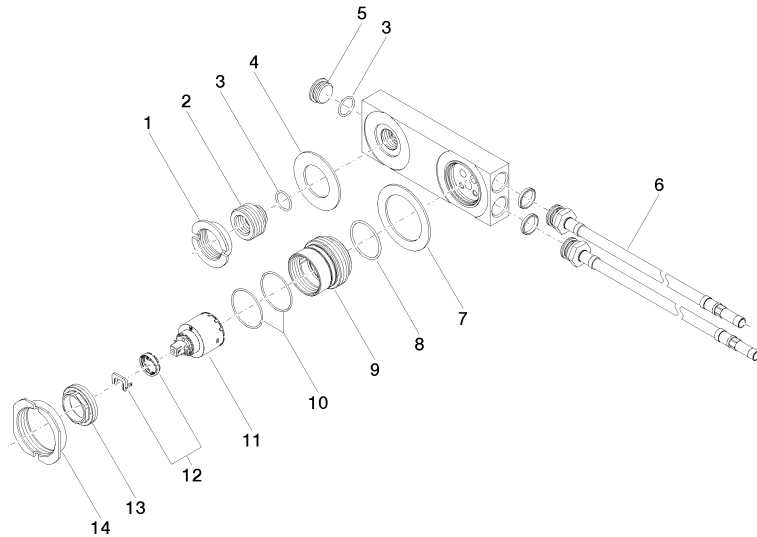


Flow rate chart



Certificates and sustainability

EPD-DOR-20230287
-IBA1-EN
Environmental product
declaration



Spare parts list

No.	Item Number	Name	Quantity used	Delivery time
1	09 23 10 019-07	Mounting Nut M32 x 1,5 mm - untreated nickel-plated	1.00	40
14	09 23 30 047 90	Mounting Nut M50 x 1 -	1.00	14
12	90 28 10 148 00 90	Temperature limitation ring -	1.00	14
8	09 14 10 034 90	O-Ring EPDM 70 38,0 x 2,0 mm -	1.00	14
6	09 30 04 059 90	High pressure hose 1/2" x 10 x 1000 mm -	2.00	14
5	09 31 20 032 10 90	Plug Ø 23,5 x 11 mm, 1/2" -	1.00	-
Spare part can no longer be ordered, please order the replacement item				
9	09 17 01 039 10 90	Sleeve Ø 50 x 43 mm -	1.00	14
3	09 14 10 053 90	O-Ring EPDM 70 17,17 x 1,78 mm -	2.00	14
2	09 24 03 064 10 90	Nipple M32 x 1,5 x 1/2" -	1.00	14
4	09 14 05 022 90	Washer NBR 70 60,0 x 34,0 x 2,0 mm -	1.00	14
7	09 14 05 019 90	Washer NBR 70 68,0 x 48,0 x 2,0 mm -	1.00	-
Spare part can no longer be ordered, please order the replacement item				
11	90 15 05 065 00 90	Cartridge -	1.00	14
13	09 24 04 105 90	Mounting Ø 40 x 12 mm -	1.00	14
10	09 14 10 190 90	O-Ring EPDM 70 38,0 x 1,5 mm -	2.00	14