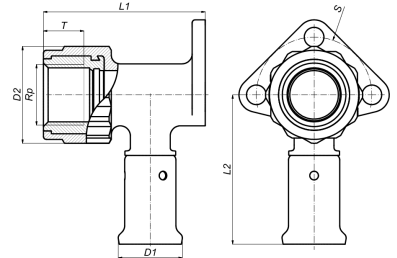


## 2PK-1603: Backplate elbow female 16x3/8"



### Commercial information

PVDF press fittings in combination with multilayer pipe, a completely corrosion-free system. The synthetic press fittings are made from injection moulded PVDF (Polyvinylidene fluoride)\*. PVDF offers the user a unique combination of properties:

- Highly resistant to pressure and temperature
- Excellent mechanical strength
- Extreme flexibility: bending up to 10° is possible
- Perfectly suited for drinking water and food
- Highly resistant to chemicals and corrosion
- Embedding is possible without extra protection

#### Basic unit dimensions

Height	56 mm
Length	78 mm
Width	52 mm
Net weight	0.108 kg

#### Certificates

ATG, QB (CSTBat), DVGW Wasser, ETA, KIWA, ÖVGW Wasser, SINTEF, WRAS, KOMO, STF, ÖN EN 21003-2/-3, GOST-R, ITC, TSU, AFNOR, PZH, ACS, DNV-GL, Aenor, Sans 21003, Kontrol Biro, EMI

#### Applications

Potable water, Heating, Compressed air, Cooling, Sanitary

#### Solutions

Building installations, Industry, Utility, Shipbuilding

## Technical characteristics

Housing material	Polyvinylidene fluoride (PVDF)	Outer pipe diameter connection	16 Millimetre
Material quality	Other	Length of connection 1	52 Millimetre
Surface protection	Untreated	Working length connection 1	25 Millimetre
Shape	Right-angled	Length of connection 2	37 Millimetre
System specific	✓	Working length connection 2	23 Millimetre
Nominal diameter connection 2	1/2 inch (15)	Length from wall plate	56 Millimetre
Connection	Press sleeve	Length of connection 3	0 Millimetre
Thread size tap connection	1/2 inch	Working length connection 3	0 Millimetre
Contour code	TH	Medium temperature (continuous)	-10 70 Degrees celsius
DVGW quality mark for gas	✗	Max. operating pressure at 20 °C	10 Bar
DVGW quality mark for water	✓	Zeta value	1.697
Compliant with NF 545	✗		
KIWA certified	✓		
Gastec QA mark	✗		
KOMO certified	✓		
Type approval according to BBR/EKS	✗		