

Basin Waste without press-closing 1 1/4" - Brushed Durabronze (23kt Gold)

SERIES-VARIOUS

10 126 970 Product version from 10/1/2023



	Brushed Durabronze (23kt Gold)	10 126 970-28
	Chrome	10 126 970-00
	Brushed Platinum	10 126 970-06
	Platinum	10 126 970-08
	Durabronze (23kt Gold)	10 126 970-09
	Dark Chrome	10 126 970-19
	Light Gold (PVD)	10 126 970-26
	Brushed Light Gold (PVD)	10 126 970-27
	Matte Black	10 126 970-33
	Brushed Gold (PVD)	10 126 970-37
	Brushed Dark Brass (PVD)	10 126 970-39
	Brushed Bronze (PVD)	10 126 970-42
	Brushed Dark Bronze (PVD)	10 126 970-43
	Brushed Champagne (22kt Gold)	10 126 970-46
	Champagne (22kt Gold)	10 126 970-47
	Brushed Chrome	10 126 970-93
	Brushed Dark Platinum	10 126 970-99



Basin Waste without press-closing 1 1/4" - Brushed Durabronze (23kt Gold)

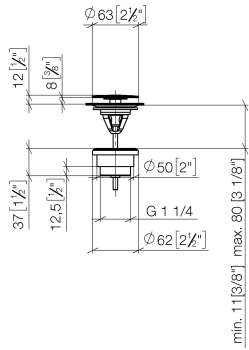
SERIES-VARIOUS

10 126 970 Product version from 10/1/2023

Only suitable for sinks without an overflow.

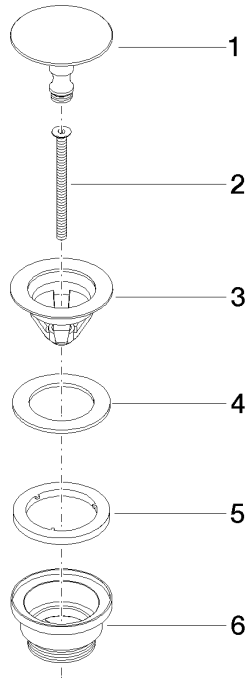
10 126 970 Product version from 10/1/2023

mm [inches]



10 126 970 Product version from 10/1/2023

Parts for other finishes can be found here: [Chrome](#)



Spare parts list

No.	Item Number	Name	Quantity used	Delivery time
2	09 30 30 179 90	Mounting Countersunk screw with hexagon socket M6 x80 mm -	1.00	14
1	09 31 20 097-28	Plug Ø 63 x 48 mm - Brushed Durabrace (23kt Gold)	1.00	40
5	09 14 03 153 90	Washer for press closing Ø 59,5 x 6,3 mm -	1.00	14
3	09 11 01 038-28	Cup for pop-up waste Press closing Ø 63 - Brushed Durabrace (23kt Gold)	1.00	40
6	09 11 10 156-28	Connection - Brushed Durabrace (23kt Gold)	1.00	40
4	09 14 05 061 90	Washer for press closing 63 mm -	1.00	14