

27 702 979 Product version up to 5/15/2020



- COMPACT RAIN, max. flow rate 6.8 l/min (at 3 bar)
- with anti-scale system
- rosette Ø 50 mm
- hole diameter 32 mm
- metal shower hose 1750mm with integrated anti-twist protection
- WRAS

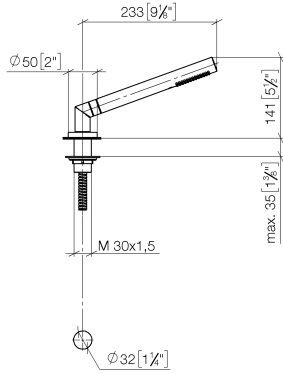
Two-piece design allows hose to later be changed without dismantling the fitting.

Intrinsic protection against back flow.

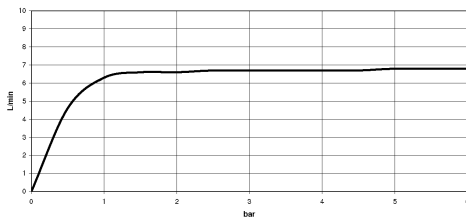
	Chrome	27 702 979-00
	Brushed Platinum	27 702 979-06
	Platinum	27 702 979-08
	Durabronze (23kt Gold)	27 702 979-09
	Dark Chrome	27 702 979-19
	Brushed Durabronze (23kt Gold)	27 702 979-28
	Matte Black	27 702 979-33
	Brushed Dark Brass (PVD)	27 702 979-39
	Brushed Bronze (PVD)	27 702 979-42
	Brushed Dark Bronze (PVD)	27 702 979-43
	Brushed Champagne (22kt Gold)	27 702 979-46
	Champagne (22kt Gold)	27 702 979-47
	Brushed Chrome	27 702 979-93
	Brushed Dark Platinum	27 702 979-99

27 702 979 Product version up to 5/15/2020

mm [inches]



Flow rate chart



Codes & Standards

ASME A112.18.1	cUPC	DIN 4109	EN 1717
ISO 3822	Scottish Water Byelaws	UK Water Supply Regulations	Ü-Zeichen



Hand shower set for bath rim or tile edge installation - Chrome

SERIES SPECIFIC

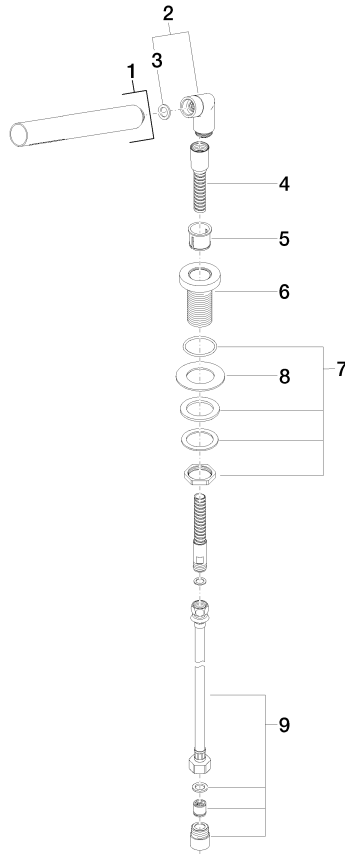
27 702 979 Product version up to 5/15/2020

Certificates and sustainability

LGA_29	IAPMO_4976	Belgaqua_21-383-2	WRAS_2209	EPD-DOR-20230287 -IBA1-EN Environmental.prod uct-declarat
--------	------------	-------------------	-----------	--

27 702 979 Product version up to 5/15/2020

Parts for other finishes can be found here: [Brushed](#)
[Platinum](#)



Spare parts list

No.	Item Number	Name	Quantity used	Delivery time
6	09 30 01 085-00	Shaft Ø 50 x 70 mm - Chrome	1.00	20
1	28 019 979-00	Hand shower - Chrome	1.00	-
Spare part can no longer be ordered, please order the replacement item				
4	28 322 970-00	Metal shower hose 1/2" x 3/8" x 1750 mm - Chrome	1.00	14
9	12 505 970 90	High pressure hose 1/2" x 3/8" x 500 mm -	1.00	14
2	04 24 04 189 00-00	Elbow 20° 55 x 40 x 23 mm - Chrome	1.00	20
7	04 30 11 038 66 90	Mounting with O-ring Ø36.17 x 2.62mm M30 x 1,5 -	1.00	14
3	90 14 20 002 00 90	Washer 18,5 x 12,0 x 2,0 mm -	1.00	14
5	90 18 40 085 00 90	Sleeve -	1.00	14
8	09 30 11 060 90	Disc 60 x 34 x 2 mm -	1.00	14