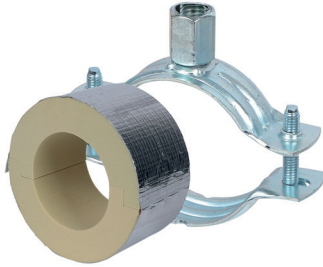


Walraven BISOFIX® PIR20 + 2S

(D0352)

for insulated pipes



Features & benefits

- for combination with rigid foam insulation
- cover joints with aluminium tape
- insulating pipe support with 2S clamp
- 2S clamp with M8/M10 connection nut
- does not contain CFC, HCFC, formaldehyde or cadmium
- fire class B2
- PIR density for $D < 110\text{mm} = 80\text{kg/m}^3$
- PIR density for $D > 110\text{mm} = 120\text{kg/m}^3$
- thermal conductivity λ (approx. value): 0.30 W/(mK)
- clamp: zinc plated
- temperature range $-45\text{ °C} - +105\text{ °C}$

Product Number	Outside Pipe Diameter	Connection Thread	Total Height	Total Width	Total Length	Insulation Thickness	Maximum Allowed Load Faz
Reference Letter	D	G	H	W	L	Is	Fo,z
Unit description	mm		mm	mm	mm	mm	N
I203303012	12	M8/M10	74	84	75	20	120
I203303015	15 - 16	M8/M10	83	93	75	20	160
I203303018	17.2 - 18	M8/M10	83	93	75	20	170
I203303020	20	M8/M10	83	93	75	20	180
I203303022	21.3 - 22	M8/M10	83	93	75	20	180
I203303025	25	M8/M10	89	99	75	20	190
I203303028	26.9 - 28	M8/M10	89	99	75	20	200
I203303032	32	M8/M10	96	111	75	20	210
I203303034	33.7 - 35	M8/M10	96	111	75	20	220
I203303040	40	M8/M10	103	118	75	20	260
I203303042	42.4	M8/M10	109	124	75	20	280
I203303048	48.3	M8/M10	119	136	75	20	300
I203303050	50	M8/M10	119	136	75	20	310
I203303054	54	M8/M10	119	136	75	20	320
I203303057	56 - 57	M8/M10	127	143	75	20	330
I203303060	60.3	M8/M10	127	143	75	20	340
I203303064	64	M8/M10	136	153	75	20	350
I203303070	70	M8/M10	136	153	75	20	370
I203303076	76.1	M8/M10	136	153	75	20	390
I203303089	88.9	M8/M10	161	178	75	20	430
I203303102	101.6	M8/M10	168	185	100	20	450
I203303108	108	M8/M10	177	194	100	20	500
I203303114	114.3	M8/M10	186	203	100	20	1,110
I203303133	133	M8/M10	210	227	100	20	1,360
I203303140	139.7	M8/M10	210	227	100	20	1,410
I203303160	159 - 160	M8/M10	232	249	100	20	1,520
I203303168	168.3	M8/M10	243	260	100	20	1,570