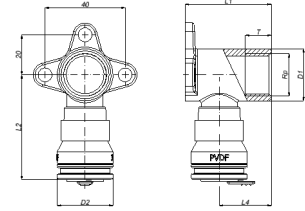


2S-1604K: Sanitair muurplaat binnendraad kort 16x1/2"



Commerciële informatie

The Henco Vision fitting is entirely made from PVDF, a high-performance material. Some key advantages of these push fittings are:

- Fast and easy installation
- Pressing machines or wrenches are not required
- For both sanitary and central heating applications
- 100% embedding guaranteed

Advantages of PVDF

- Highly resistant to pressure and temperature
- Excellent mechanical strength
- Extreme flexibility: bending up to 10° is possible
- Perfectly suited for drinking water and foodstuffs
- Embedding is possible without extra protection
- Highly resistant to chemicals and corrosion

Dimensies basiseenheid

Hoogte	43 mm
Lengte	79 mm
Breedte	52 mm
Netto gewicht	0,162 kg
SCIP nummer	6b5ef4aa-b2e5-4f8c-8ef1-685f34c18f66

Certificaten

KIWA, KOMO, DVGW Wasser, GOST-R, QB (CSTBat), ATG, WRAS, ÖVGW Wasser, AFNOR, SINTEF, ETA, STF, RISE, ACS, PZH, TSU, EMI

Toepassingen

Drinkwater, Verwarming, Koeling, Sanitair

Oplossingen

Gebouwinstallaties, Industrie, Infra

Technische kenmerken

Materiaal behuizing	Messing	Uitwendige buisdiameter aansluiting	16 Millimeter
Materiaal behuizing	Messing	Mediumtemperatuur (continu)	-10 70 Graden Celsius
Oppervlaktebescherming	Onbehandeld	Max. werkdruk bij 20°C	10 bar
Systeemgebonden	✓		
Aansluiting	Insteek (push-fitting)		
KIWA-keur	✓		