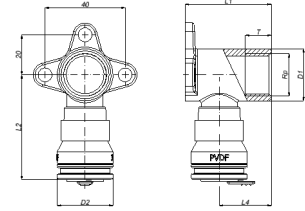


## 2S-1604K: Backplate elbow female short model 16x1/2"



### Commercial information

The Henco Vision fitting is entirely made from PVDF, a high-performance material. Some key advantages of these push fittings are:

- Fast and easy installation
- Pressing machines or wrenches are not required
- For both sanitary and central heating applications
- 100% embedding guaranteed

Advantages of PVDF

- Highly resistant to pressure and temperature
- Excellent mechanical strength
- Extreme flexibility: bending up to 10° is possible
- Perfectly suited for drinking water and foodstuffs
- Embedding is possible without extra protection
- Highly resistant to chemicals and corrosion

#### Basic unit dimensions

Height	43 mm
Length	79 mm
Width	52 mm
Net weight	0.162 kg

#### Certificates

KIWA, KOMO, DVGW Wasser, GOST-R, QB (CSTBat), ATG, WRAS, ÖVGW Wasser, AFNOR, SINTEF, ETA, STF, RISE, ACS, PZH, TSU, EMI

#### Applications

Potable water, Heating, Cooling, Sanitary

#### Solutions

Building installations, Industry, Utility

## Technical characteristics

Housing material	Brass	Outer pipe diameter connection	16 Millimetre
Housing material	Brass	Medium temperature (continuous)	-10 70 Degrees celsius
Surface protection	Untreated	Max. operating pressure at 20 °C	10 Bar
System specific	✓		
Connection	Insert (push-fitting)		
KIWA certified	✓		