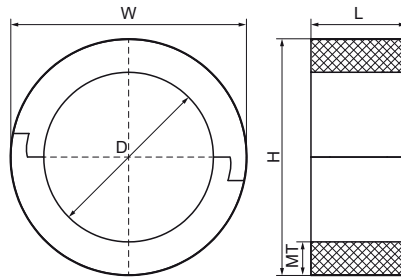


## Walraven BISOFIX® PIR30

(D0360)

for insulated pipes



### Features & benefits

- for combination with rigid foam insulation
- cover joints with aluminium tape
- does not contain CFC, HCFC, formaldehyde or cadmium
- fire class B2
- PIR density for  $D < 110\text{mm} = 80\text{kg/m}^3$
- PIR density for  $D > 110\text{mm} = 120\text{kg/m}^3$
- thermal conductivity lambda (approx. value):  $0.30\text{ W/(mK)}$
- temperature range  $-45\text{ °C} - +105\text{ °C}$



Product Number	Outside Pipe Diameter	DN	Total Height	Total Width	Total Length	Material Thickness	Operating Temperature	Maximum Allowed Load Faz
Reference Letter	D	D	H	W	L	MT	CEL	F <sub>a,z</sub>
Unit description	mm		mm	mm	mm	mm		N
I300000114	114.3	DN 100	174	174	100	30.00	-45 - 105	1,370
I300000089	88.9	DN 80	149	149	75	30.00	-45 - 105	500
I300000076	76.1	DN 65	136	136	75	30.00	-45 - 105	460
I300000064	64		124	124	75	30.00	-45 - 105	420
I300000054	54		114	114	75	30.00	-45 - 105	380
I300000048	48.3	DN 40	108	108	75	30.00	-45 - 105	370
I300000042	42.4	DN 32	102	102	75	30.00	-45 - 105	350
I300000034	33.7 - 35		95	95	75	30.00	-45 - 105	320
I300000028	26.9 - 28	DN 20	88	88	75	30.00	-45 - 105	300
I300000022	21.3 - 22	DN 15	82	82	75	30.00	-45 - 105	230
I300000018	17.2 - 18	DN 10	78	78	75	30.00	-45 - 105	190
I300000012	12		72	72	75	30.00	-45 - 105	130
I300000015	15 - 16		75	75	75	30.00	-45 - 105	170
I300000020	20		80	80	75	30.00	-45 - 105	220
I300000025	25		85	85	75	30.00	-45 - 105	260
I300000032	32		92	92	75	30.00	-45 - 105	310
I300000040	40		100	100	75	30.00	-45 - 105	340
I300000050	50		110	110	75	30.00	-45 - 105	370
I300000057	56 - 57		117	117	75	30.00	-45 - 105	390
I300000060	60.3	DN 50	120	120	75	30.00	-45 - 105	410
I300000070	70		130	130	75	30.00	-45 - 105	440
I300000102	101.6		162	162	75	30.00	-45 - 105	550
I300000108	108		168	168	75	30.00	-45 - 105	620
I300000133	133		193	193	100	30.00	-45 - 105	1,520
I300000140	139.7	DN 125	200	200	100	30.00	-45 - 105	1,570
I300000160	159 - 160		220	220	100	30.00	-45 - 105	1,720
I300000168	168.3	DN 150	228	228	100	30.00	-45 - 105	2,720
I300000219	219.1	DN 200	279	279	150	30.00	-45 - 105	4,210
I300000273	273.1		333	333	150	30.00	-45 - 105	5,020
I300000324	323.9		384	384	150	30.00	-45 - 105	5,790