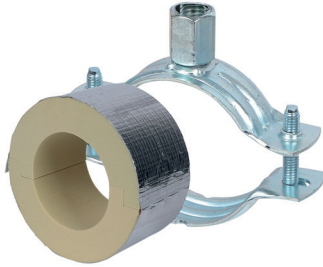


Walraven BISOFIX® PIR30 + 2S

(D0362)

for insulated pipes



Features & benefits

- for combination with rigid foam insulation
- cover joints with aluminium tape
- insulating pipe support with 2S clamp
- 2S clamp with M8/M10 connection nut
- does not contain CFC, HCFC, formaldehyde or cadmium
- fire class B2
- PIR density for $D < 110\text{mm} = 80\text{kg/m}^3$
- PIR density for $D > 110\text{mm} = 120\text{kg/m}^3$
- thermal conductivity lambda (approx. value): 0.30 W/(mK)
- clamp: zinc plated
- temperature range $-45\text{ °C} - +105\text{ °C}$

Product Number	Outside Pipe Diameter	Connection Thread	Total Height	Total Width	Total Length	Insulation Thickness	Maximum Allowed Load Faz
Reference Letter	D	G	H	W	L	Is	Fo,z
Unit description	mm		mm	mm	mm	mm	N
I303303114	114.3	M8/M10	210	227	100	30	1,370
I303303018	17.2 - 18	M8/M10	103	118	75	30	190
I303303022	21.3 - 22	M8/M10	109	124	75	30	230
I303303028	26.9 - 28	M8/M10	119	136	75	30	300
I303303034	33.7 - 35	M8/M10	119	136	75	30	320
I303303042	42.4	M8/M10	127	143	75	30	350
I303303048	48.3	M8/M10	136	153	75	30	370
I303303054	54	M8/M10	136	153	75	30	380
I303303064	64	M8/M10	151	168	75	30	420
I303303076	76.1	M8/M10	161	178	75	30	460
I303303089	88.9	M8/M10	177	194	75	30	500
I303303012	12	M8/M10	103	118	75	30	130
I303303015	15 - 16	M8/M10	103	118	75	30	170
I303303020	20	M8/M10	103	118	75	30	200
I303303025	25	M8/M10	109	124	75	30	260
I303303032	32	M8/M10	119	136	75	30	310
I303303040	40	M8/M10	127	143	75	30	340
I303303050	50	M8/M10	136	153	75	30	370
I303303057	56 - 57	M8/M10	136	153	75	30	390
I303303060	60.3	M8/M10	151	168	75	30	410
I303303070	70	M8/M10	161	178	75	30	440
I303303102	101.6	M8/M10	186	203	100	30	550
I303303108	108	M8/M10	199	217	100	30	620
I303303133	133	M8/M10	221	239	100	30	1,520
I303303140	139.7	M8/M10	232	249	100	30	1,570
I303303160	159 - 160	M8/M10	253	271	100	30	1,720