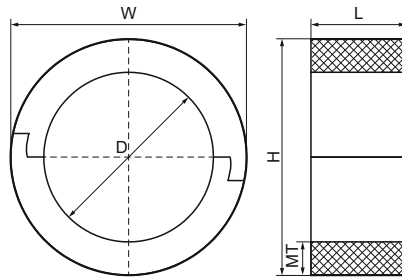


Walraven BISOFIX® PIR40

(D0370)

for insulated pipes



Features & benefits

- for combination with rigid foam insulation
- cover joints with aluminium tape
- does not contain CFC, HCFC, formaldehyde or cadmium
- fire class B2
- PIR density for $D < 110\text{mm} = 80\text{kg/m}^3$
- PIR density for $D > 110\text{mm} = 120\text{kg/m}^3$
- thermal conductivity lambda (approx. value): 0.30 W/(mK)
- temperature range $-45 \text{ }^\circ\text{C} - +105 \text{ }^\circ\text{C}$



Product Number	Outside Pipe Diameter	DN	Total Height	Total Width	Total Length	Material Thickness	Operating Temperature	Maximum Allowed Load Faz
Reference Letter	D	D	H	W	L	MT	CEL	F _{a,z}
Unit description	mm		mm	mm	mm	mm		N
I400000273	273.1		353	353	150	40.00	-45 - 105	5,320
I400000219	219.1	DN 200	299	299	150	40.00	-45 - 105	4,510
I400000168	168.3	DN 150	248	248	100	40.00	-45 - 105	2,960
I400000140	139.7	DN 125	220	220	100	40.00	-45 - 105	1,730
I400000012	12		92	92	75	40.00	-45 - 105	300
I400000015	15 - 16		95	95	75	40.00	-45 - 105	320
I400000018	17.2 - 18	DN 10	98	98	75	40.00	-45 - 105	340
I400000020	20		100	100	75	40.00	-45 - 105	340
I400000022	21.3 - 22	DN 15	102	102	75	40.00	-45 - 105	350
I400000025	25		105	105	75	40.00	-45 - 105	350
I400000028	26.9 - 28	DN 20	108	108	75	40.00	-45 - 105	350
I400000032	32		112	112	75	40.00	-45 - 105	370
I400000034	33.7 - 35		115	115	75	40.00	-45 - 105	370
I400000040	40		120	120	75	40.00	-45 - 105	400
I400000042	42.4	DN 32	122	122	75	40.00	-45 - 105	410
I400000048	48.3	DN 40	128	128	75	40.00	-45 - 105	430
I400000054	54		134	134	75	40.00	-45 - 105	440
I400000057	56 - 57		137	137	75	40.00	-45 - 105	460
I400000060	60.3	DN 50	140	140	75	40.00	-45 - 105	470
I400000064	64		144	144	75	40.00	-45 - 105	490
I400000070	70		150	150	75	40.00	-45 - 105	510
I400000076	76.1	DN 65	156	156	75	40.00	-45 - 105	530
I400000089	88.9	DN 80	169	169	75	40.00	-45 - 105	620
I400000102	101.6		182	182	75	40.00	-45 - 105	650
I400000108	108		188	188	75	40.00	-45 - 105	690
I400000114	114.3	DN 100	194	194	100	40.00	-45 - 105	1,530
I400000133	133		213	213	100	40.00	-45 - 105	167
I400000160	159 - 160		240	240	100	40.00	-45 - 105	2,850
I400000324	323.9		404	404	150	40.00	-45 - 105	6,090
I400000406	406.4		486	486	150	40.00	-45 - 105	6,150