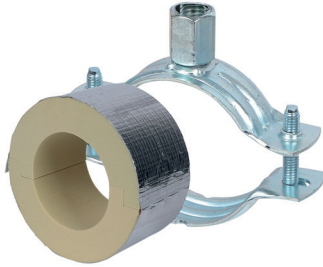


Walraven BISOFIX® PIR40 + 2S

(D0372)

for insulated pipes



Features & benefits

- for combination with rigid foam insulation
- cover joints with aluminium tape
- insulating pipe support with 2S clamp
- 2S clamp with M8/M10 connection nut
- does not contain CFC, HCFC, formaldehyde or cadmium
- fire class B2
- PIR density for $D < 110\text{mm} = 80\text{kg/m}^3$
- PIR density for $D > 110\text{mm} = 120\text{kg/m}^3$
- thermal conductivity lambda (approx. value): 0.30 W/(mK)
- clamp: zinc plated
- temperature range $-45\text{ °C} - +105\text{ °C}$

Product Number	Outside Pipe Diameter	Connection Thread	Total Height	Total Width	Total Length	Insulation Thickness	Maximum Allowed Load Faz
Reference Letter	D	G	H	W	L	Is	Fa,z
Unit description	mm		mm	mm	mm	mm	N
I403303140	139.7	M8/M10	253	271	100	40	1,730
I403303012	12	M8/M10	119	136	75	40	300
I403303015	15 - 16	M8/M10	119	136	75	40	320
I403303018	17.2 - 18	M8/M10	127	143	75	40	340
I403303020	20	M8/M10	127	143	75	40	340
I403303022	21.3 - 22	M8/M10	127	143	75	40	350
I403303025	25	M8/M10	136	153	75	40	350
I403303028	26.9 - 28	M8/M10	136	153	75	40	350
I403303032	32	M8/M10	136	153	75	40	370
I403303034	33.7 - 35	M8/M10	136	153	75	40	370
I403303040	40	M8/M10	151	168	75	40	400
I403303042	42.4	M8/M10	151	168	75	40	410
I403303048	48.3	M8/M10	161	178	75	40	430
I403303054	54	M8/M10	161	178	75	40	440
I403303057	56 - 57	M8/M10	161	178	75	40	460
I403303060	60.3	M8/M10	168	185	75	40	470
I403303064	64	M8/M10	168	185	75	40	490
I403303070	70	M8/M10	177	194	75	40	510
I403303076	76.1	M8/M10	186	203	75	40	530
I403303089	88.9	M8/M10	199	217	75	40	620
I403303102	101.6	M8/M10	210	227	100	40	650
I403303108	108	M8/M10	221	239	100	40	690
I403303114	114.3	M8/M10	221	239	100	40	1,560
I403303133	133	M8/M10	243	260	100	40	1,670