

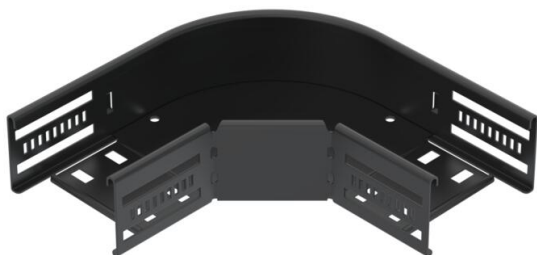
Technical data sheet

90° bend 60, black

Item number: 6043260



90° bend, horizontal, fitting for all cable tray types of 60 mm side height. Black coated.



St Steel

P135 PES135 - Polyester

Master data

Item number	6043260
Type	RB 90 610 FSK SW
Description 1	90° bend
Description 2	for cable tray, horizontal
Manufacturer	OBO
Dimension	60x100
Colour	Jet black; RAL 9005
Material	Steel
Surface	PES135 - Polyester
Surface standard	
Smallest sales unit	1
Unit of quantity	Piece
Weight	54 kg
Weight unit	kg/100 pc.
CO2 Footprint (GWP) Cradle-to-Gate	0,1374 kg CO2e / 1 Piece

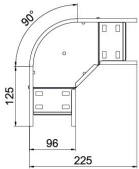
Technical data sheet

90° bend 60, black

Item number: 6043260



Dimensions



Width	100 mm
Height	60 mm
Dimension B	100 mm

Technical data

Bend (angle)	90°
Connector version	Integrated connector
Type	Bend, rigid
Maintain electrical functions	yes
Material thickness, floor plate	0.8 mm
With cover	no
Mounting perforation in base	no
Change of direction	Horizontal
Rustproof steel, pickled	no
Side perforation	no
Wide-span version	no
Recommended quantity of bolts	10 St.
Rail thickness	1.25 mm