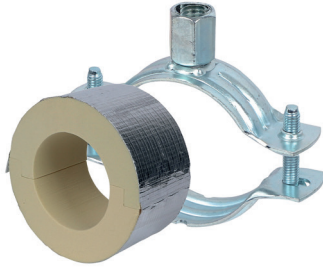


Walraven BISOFIX® PIR50 + 2S

(D0382)

for insulated pipes



Features & benefits

- for combination with rigid foam insulation
- cover joints with aluminium tape
- insulating pipe support with 2S clamp
- 2S clamp with M8/M10 connection nut
- does not contain CFC, HCFC, formaldehyde or cadmium
- fire class B2
- PIR density for $D < 110\text{mm} = 80\text{kg/m}^3$
- PIR density for $D > 110\text{mm} = 120\text{kg/m}^3$
- thermal conductivity lambda (approx. value): 0.30 W/(mK)
- clamp: zinc plated
- temperature range $-45\text{ °C} - +105\text{ °C}$

Product Number	Outside Pipe Diameter	Connection Thread	Total Height	Total Width	Total Length	Insulation Thickness	Maximum Allowed Load Faz
Reference Letter	D	G	H	W	L	Is	Fa,z
Unit description	mm		mm	mm	mm	mm	N
I503303012	12	M8/M10	136	153	75	50	220
I503303015	15 - 16	M8/M10	136	153	75	50	250
I503303018	17.2 - 18	M8/M10	136	153	75	50	300
I503303020	20	M8/M10	151	168	75	50	340
I503303022	21.3 - 22	M8/M10	151	168	75	50	340
I503303025	25 - 26	M8/M10	151	168	75	50	350
I503303028	26.9 - 28	M8/M10	161	178	75	50	350
I503303032	32	M8/M10	161	178	75	50	370
I503303034	33.7 - 35	M8/M10	161	178	75	50	370
I503303040	40	M8/M10	168	185	75	50	440
I503303042	42.4	M8/M10	168	185	75	50	470
I503303048	48.3	M8/M10	177	194	75	50	500
I503303050	50	M8/M10	177	194	75	50	510
I503303054	54	M8/M10	186	203	75	50	520
I503303057	56 - 57	M8/M10	186	203	75	50	520
I503303060	60.3	M8/M10	186	203	75	50	540
I503303064	64	M8/M10	199	217	75	50	550
I503303070	70	M8/M10	199	217	75	50	600
I503303076	76.1	M8/M10	210	227	75	50	650
I503303089	88.9	M8/M10	221	239	75	50	690
I503303102	101.6	M8/M10	232	249	100	50	720
I503303108	108	M8/M10	243	260	100	50	760
I503303114	114.3	M8/M10	243	260	100	50	1,680