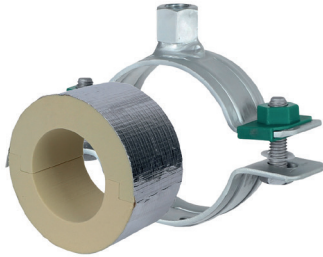


Walraven BISOFIX® PIR50 + HD500

(D0386)

for insulated pipes



Features & benefits

- for combination with rigid foam insulation
- cover joints with aluminium tape
- insulating pipe support with HD500 clamp
- HD500 clamp with M8/M10 and M10/M12 connection nut
- does not contain CFC, HCFC, formaldehyde or cadmium
- fire class B2
- PIR density for $D < 110\text{mm} = 80\text{kg/m}^3$
- PIR density for $D > 110\text{mm} = 120\text{kg/m}^3$
- thermal conductivity lambda (approx. value): 0.30 W/(mK)
- product is part of the Walraven UltraProtect® 1000 system
- suitable for in- and outdoor applications
- stands min. 1,000 hours salt spray test (max. 5% red rust) according to ISO 9227
- temperature range $-45\text{ °C} - +105\text{ °C}$

Product Number	Outside Pipe Diameter	Connection Thread	Total Height	Total Width	Total Length	Insulation Thickness	Maximum Allowed Load Faz
Reference Letter	D	G	H	W	L	Is	Fa,z
Unit description	mm		mm	mm	mm	mm	N
I503304076	76.1	M10/M12	221	254	75	50	650
I503304089	88.9	M10/M12	240	274	75	50	690
I503304102	101.6	M10/M12	240	274	100	50	720
I503304108	108	M10/M12	256	290	100	50	760
I503304114	114.3	M10/M12	256	290	100	50	1,680
I503304133	133	M10/M12	277	322	100	50	2,780
I503304140	139.7	M10/M12	277	322	100	50	2,860
I503304160	159 - 160	M10/M12	300	345	100	50	3,090
I503304168	168.3	M10/M12	315	360	100	50	3,200
I503304219	219.1	M10/M12	358	403	150	50	4,810
I503304273	273.1	M10/M12	409	453	150	50	5,620
I503304324	323.9	M10/M12	471	515	150	50	6,390
I503304406	406.4	M10/M12	544	588	150	50	6,410