

ELIO Single-lever mixer Pull-out with spray function - Brushed Dark Brass (PVD)

ELIO

33 871 790 Product version from 4/1/2024



- 219mm projection
- pivoting spout 360°
- air-enriched flow and spray flow
- height of mixer 337 mm
- height up to aerator 292 mm
- hole diameter 35 mm
- fabric braided hose 1500 mm
- max. flow 8 l/min at 3 bar flow pressure
- lead-free
- This product can help a building meet the requirements of Green Building Rating Systems, e.g. LEED®, BREEAM®, DGNB

Intrinsic protection against back flow.

	Brushed Dark Brass (PVD)	33 871 790-39
	Chrome	33 871 790-00
	Brushed Platinum	33 871 790-06
	Platinum	33 871 790-08
	Dark Chrome	33 871 790-19
	Brushed Durabronze (23kt Gold)	33 871 790-28
	Brushed Bronze (PVD)	33 871 790-42
	Brushed Dark Bronze (PVD)	33 871 790-43
	Brushed Champagne (22kt Gold)	33 871 790-46
	Champagne (22kt Gold)	33 871 790-47
	Brushed Chrome	33 871 790-93
	Brushed Dark Platinum	33 871 790-99

Recommended miscellaneous



**Dispenser without rosette -
Brushed Dark Brass (PVD)**

82 424 970-39

Recommended miscellaneous

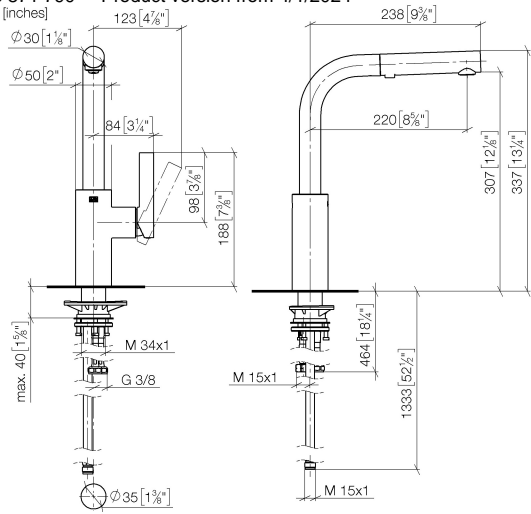


**Strainer waste with control handle
- Brushed Dark Brass (PVD)**

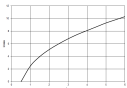
10 712 970-39

33 871 790 Product version from 4/1/2024

mm [inches]



Flow rate chart



Codes & Standards

DIN 4109

ISO 3822

Ü-Zeichen



ELIO Single-lever mixer Pull-out with spray function - Brushed Dark Brass
(PVD)

ELIO

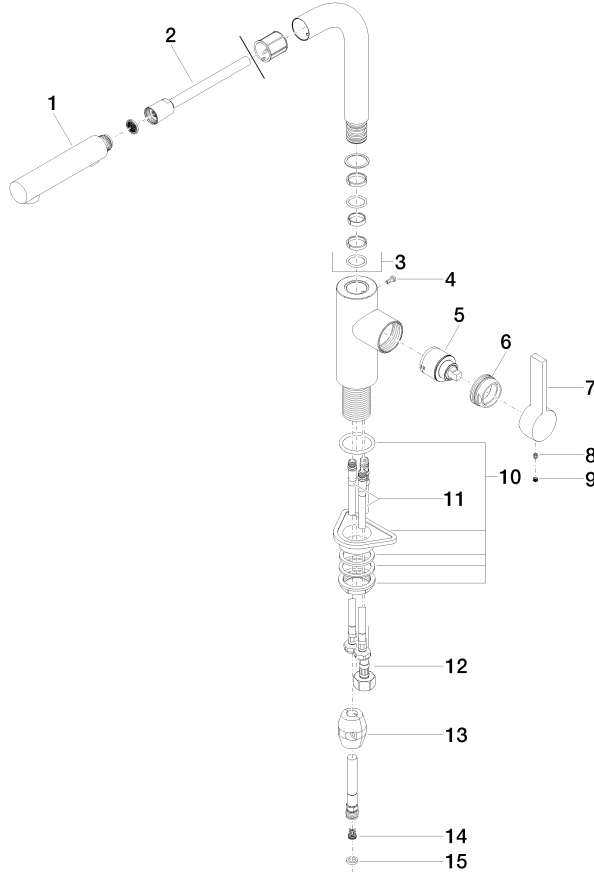
33 871 790 Product version from 4/1/2024

Certificates and sustainability

LGA_38	EPD-DOR-20230287 -IBA1-EN Environmental.prod uct-declarat
--------	--

33 871 790 Product version from 4/1/2024

Parts for other finishes can be found here: [Chrome](#)



Spare parts list

No.	Item Number	Name	Quantity used	Delivery time
	5	90 15 05 045 00 90	Cartridge black Ø 35 x 52 mm -	1.00 14
	7	09 24 04 141-39	Mounting Ø 40 x 18 mm - Brushed Dark Brass (PVD)	2.00 82
	15	90 14 20 019 00 90	Washer Vf 3110 13,9 x 10 x 2 mm -	1.00 14
	13	04 21 50 005 00 90	Weight for kitchen spray hoses 400g -	1.00 14
	14	09 23 01 131 90	Back-flow preventer without limitation Ø 10 x 10,5 mm -	1.00 14
	2	90 30 02 062 00-39	hose	1.00 40
	1	90 12 11 185 00-39	shower	1.00 -

Spare part can no longer be ordered, please order the replacement item

	8	90 31 11 030 00 90	Mounting Threaded pin with hexagon socket with cup point M5 x 5 mm -	1.00 14
	4	09 30 30 054 90	Mounting Cylinder head screw with hexagon socket with low profile M4 x 10 mm -	1.00 14
	10	04 30 11 040 00 90	Mounting for sink unit deck mounting with spacer M34 x 1 -	1.00 14
	9	90 31 20 109 00 90	Plug -	1.00 14
	11	04 30 04 104 00 90	High pressure hose M10x1 x 3/8" x 420 mm -	2.00 14
	12	04 30 04 029 00 90	High pressure hose M10x1 x M15x1 x 420 mm -	1.00 14
	3	90 28 22 186 00-39	spout	1.00 -

Spare part can no longer be ordered, please order the replacement item