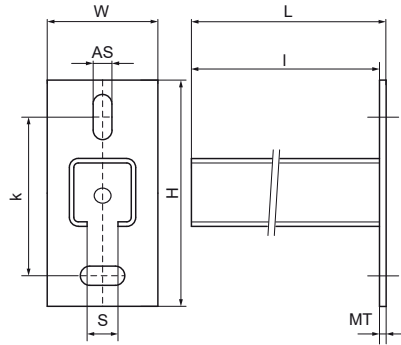
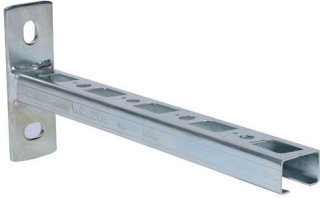


Walraven RapidRail® Cantilever Arm

(G1007)

fixing to wall, floor or ceiling



Features & benefits

- base plate with welded C-profile
- for quick and adjustable fixing of one or multiple pipes
- CO₂ welded
- with continuous perforation
- with sawing marks each 50 mm
- unique hole pattern at type 30x20 allows to click in Walraven RapidRail® Hammerfix from both sides
- material: base plate made of steel 1.0332 (DD11)
- material: profiles type 27x18 and 30x20 made of steel 1.0330 (DC01)
- material: profiles type 30x15 and 30x30 made of steel 1.0038 (S235JR)
- zinc plated
- for more information about the max. allowed load (Faz) please refer to the loading tables or our online datasheet 'Technical Details Walraven RapidRail®'



Product Number	Type	Length	Total Height	Total Width	Total Length	Material Thickness	Anchoring Slot	Profile Opening	Heart To Heart Distance
Reference Letter		<i>l</i>	<i>H</i>	<i>W</i>	<i>L</i>	<i>MT</i>	<i>AS</i>	<i>S</i>	<i>k</i>
Unit description		mm	mm	mm	mm	mm	mm	mm	mm
66031815	27x18	150	110	38	154	4.00	16x11	15	70
66031820	27x18	200	110	38	204	4.00	16x11	15	70
66031830	27x18	300	110	38	304	4.00	16x11	15	70
66031850	27x18	500	110	38	504	4.00	16x11	15	70
66031520	30x15	200	110	38	204	4.00	16x11	15	70
66031530	30x15	300	110	38	304	4.00	16x11	15	70
66032015	30x20	150	110	38	154	4.00	16x11	15	70
66032020	30x20	200	110	38	204	4.00	16x11	15	70
66032025	30x20	250	110	38	254	4.00	16x11	15	70
66033020	30x30	200	110	48	205	5.00	18x11	15	70
66033025	30x30	250	110	48	255	5.00	18x11	15	70
66033030	30x30	300	110	48	305	5.00	18x11	15	70
66033040	30x30	400	110	48	405	5.00	18x11	15	70
66033050	30x30	500	110	48	505	5.00	18x11	15	70