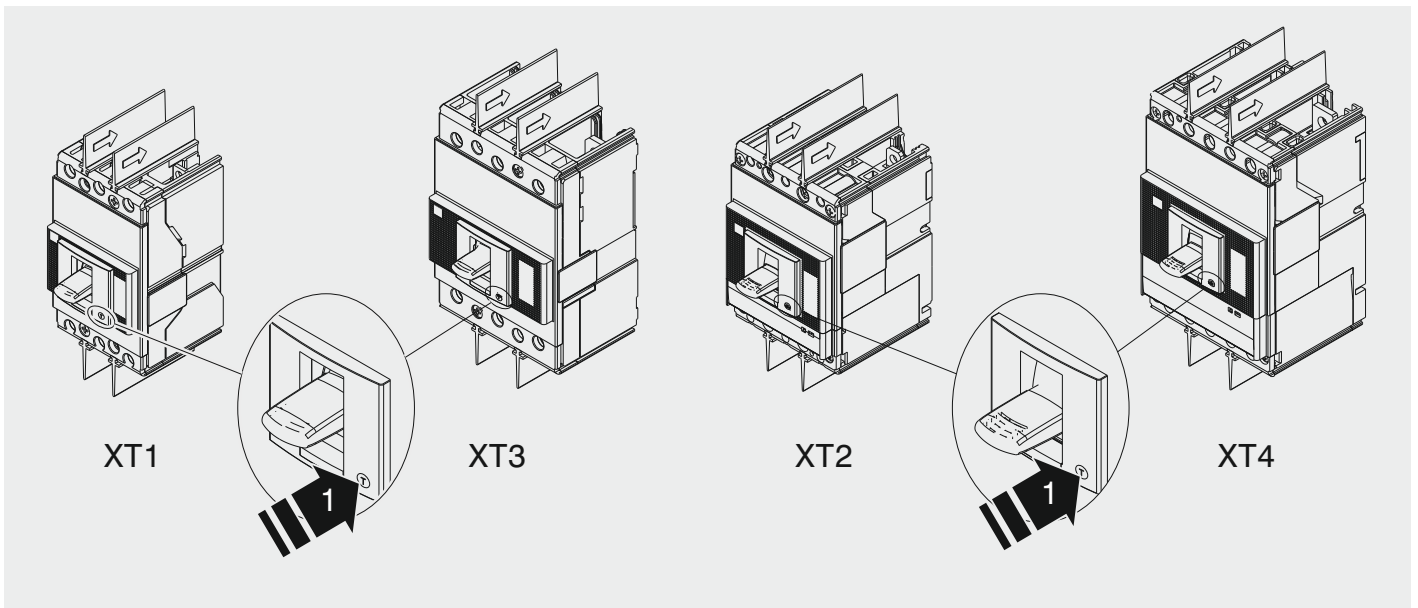


SACE Tmax XT

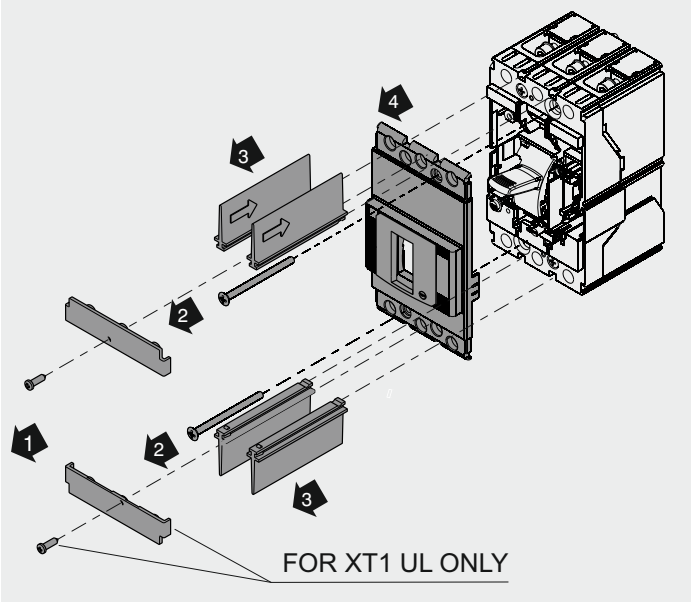
RHE - Comando a maniglia rotante OEMS
 RHE - Rotary handle operating mechanism OEMS door mounted
 RHE - Drehhebelantrieb OEMS Ubertragen
 RHE - Commande par poignée rotative OEMS renvoyée
 RHE - Mando giratorio reenviado OEMS
 RHE - 旋转把手操作机构 OEMS 门已安装

XT1 - XT2 - XT3 - XT4/III - IV

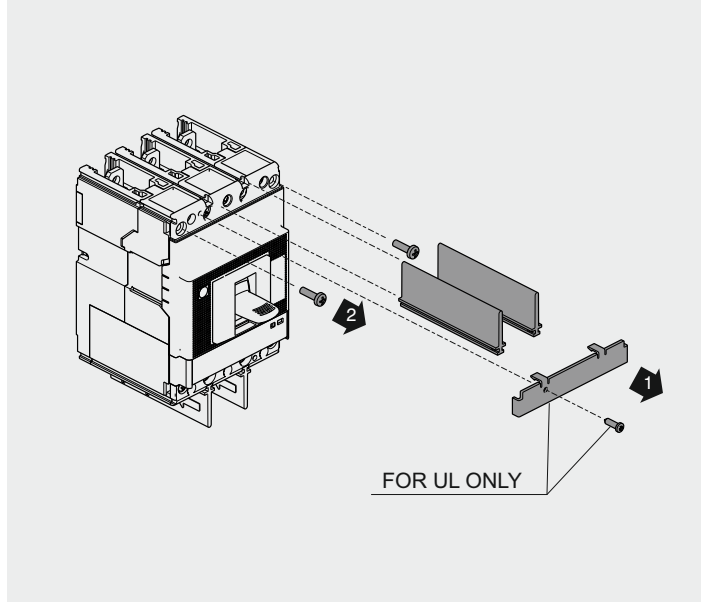


F-P	1	1	4	2	2
W	1	1	4	2	2
F-P	1	1	1	0	0
W	1	1	0	1	1
				XT4	XT2
F-P				0	0
W				1	1

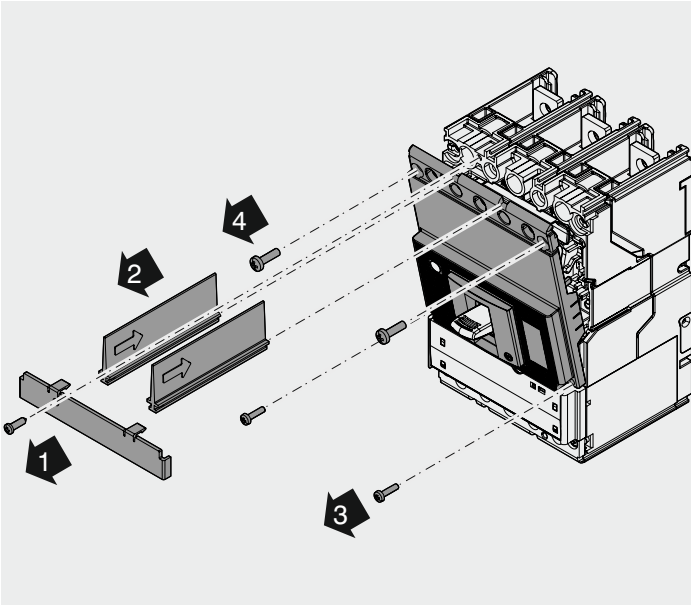
1 ONLY FOR XT1 F - XT3 F



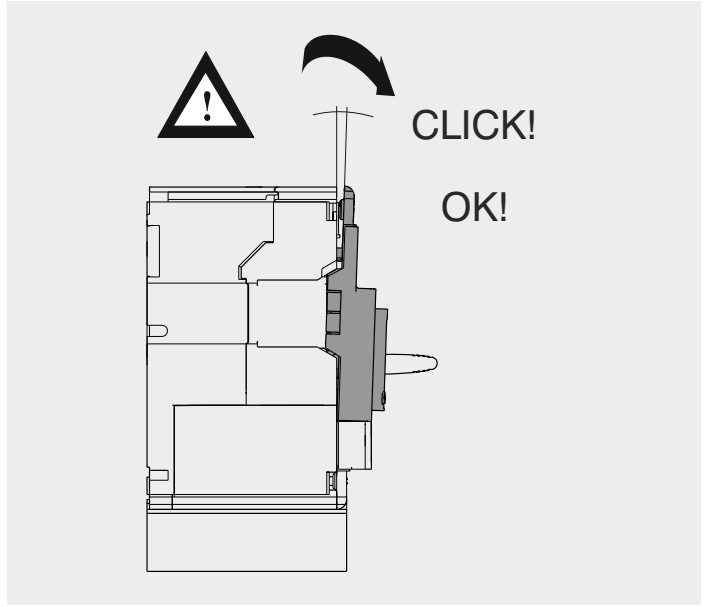
2 ONLY FOR XT2 F - XT4 F



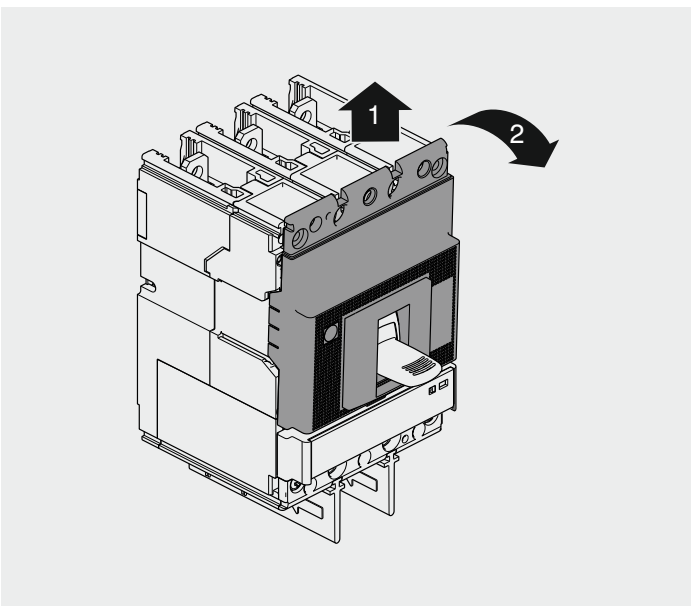
3 XT4 V - X ONLY



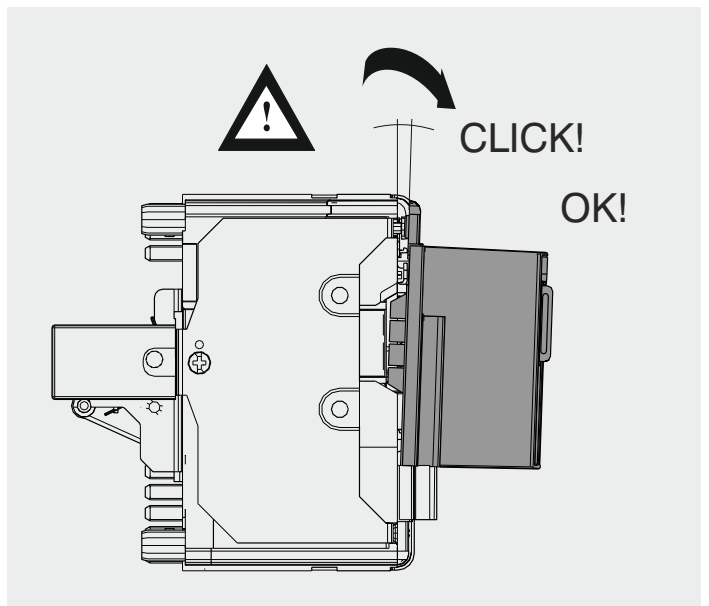
4 ONLY FOR XT2 F/P - XT4 F/P



5 ONLY FOR XT2 F/P - XT4 F/P

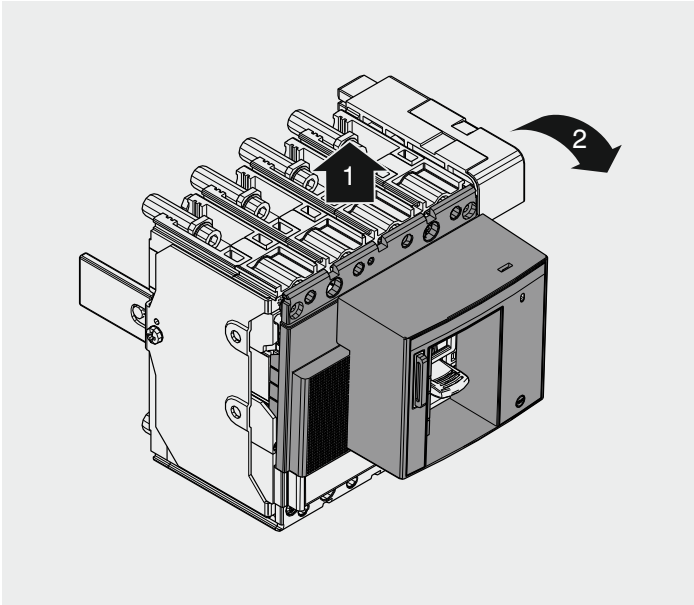


6 ONLY FOR XT2 W - XT4 W

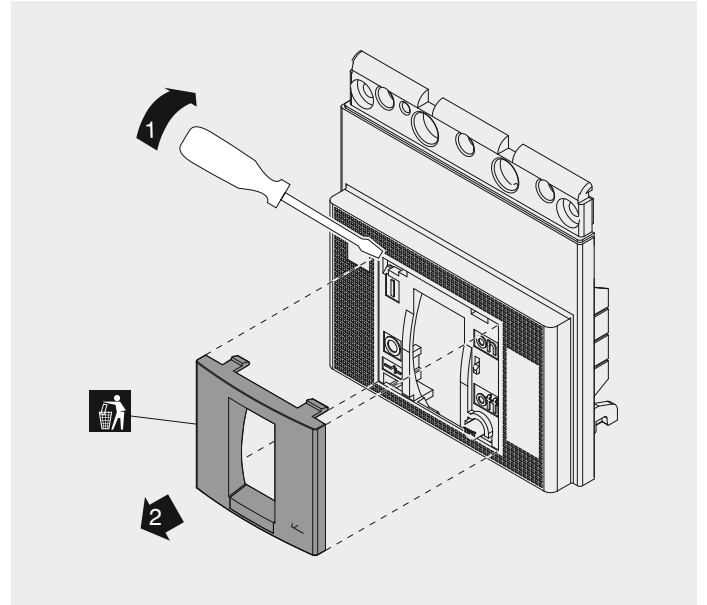


7

ONLY FOR XT2 W - XT4 W

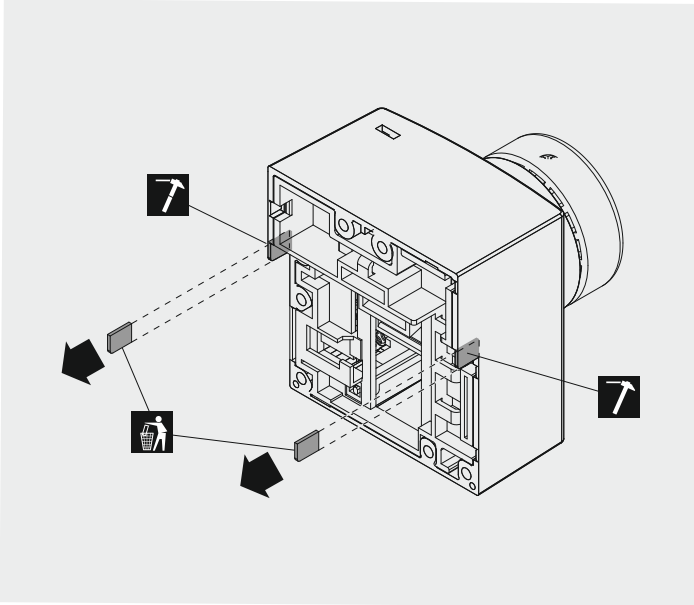


8



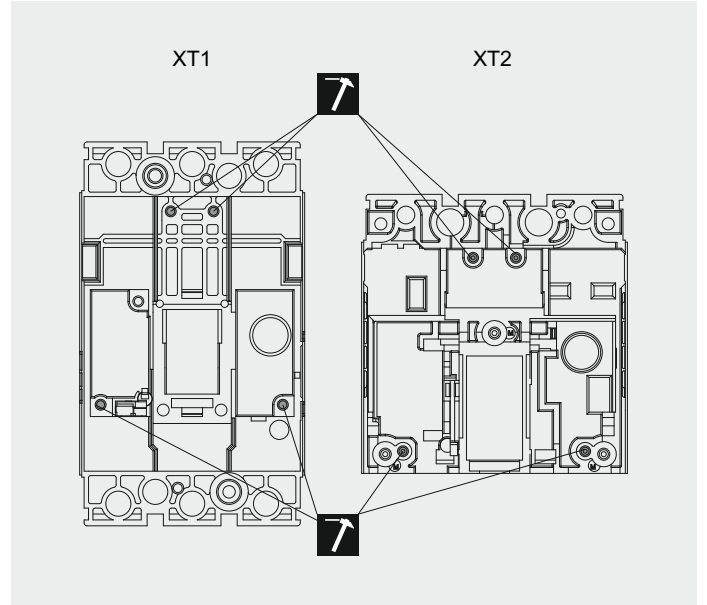
9

ONLY FOR XT2 - XT4



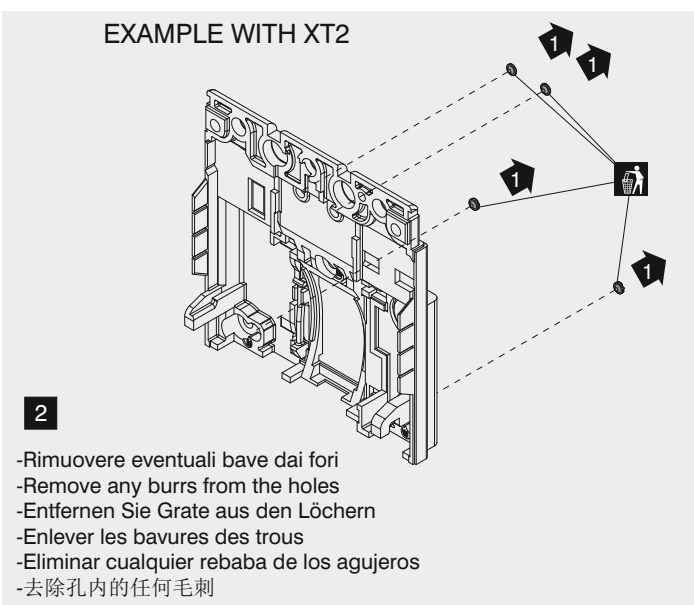
10

XT1 - XT2



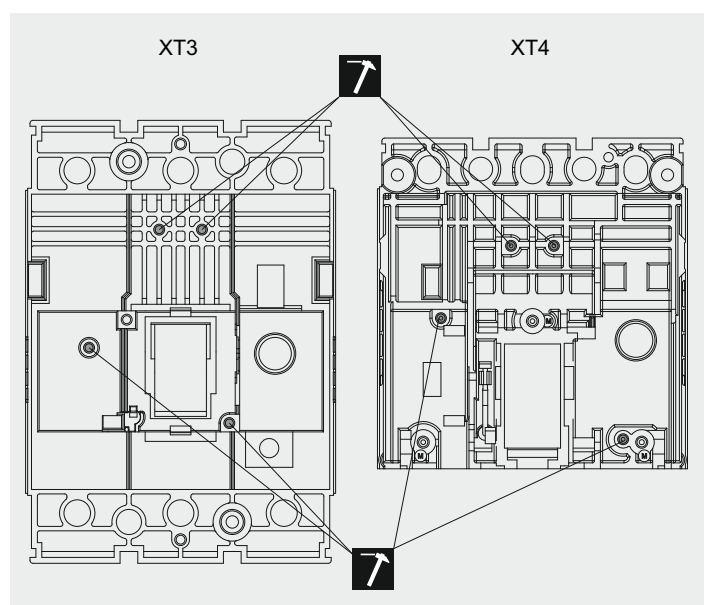
11

XT1 - XT2



12

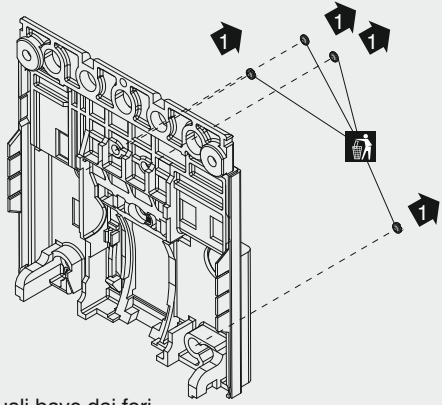
XT3 - XT4



13

XT3 - XT4

EXAMPLE WITH XT4

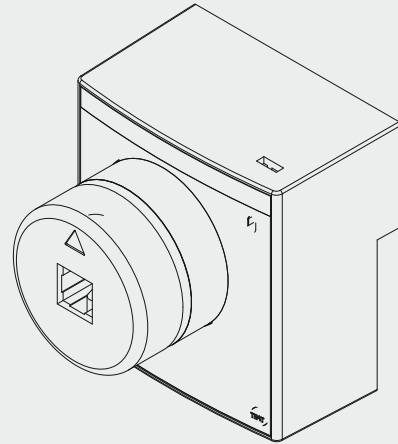


2

- Rimuovere eventuali bave dai fori
- Remove any burrs from the holes
- Entfernen Sie Grate aus den Löchern
- Enlever les bavures des trous
- Eliminar cualquier rebaba de los agujeros
- 去除孔内的任何毛刺

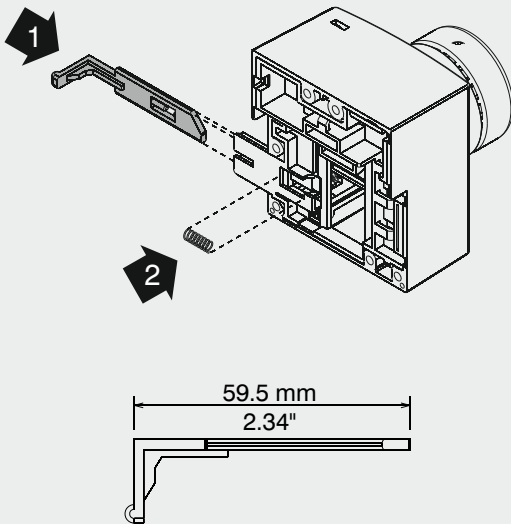
14

XT1 - XT2 - XT3 - XT4/F - P



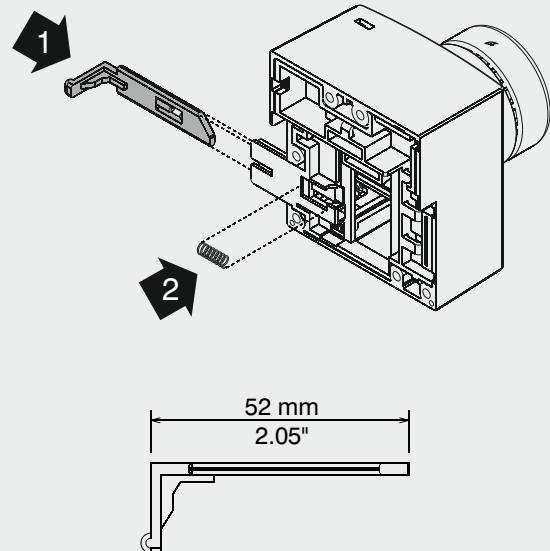
15

XT4 W ONLY



16

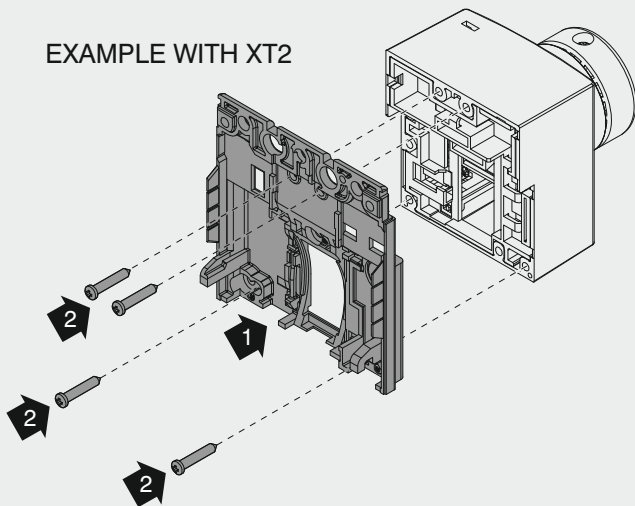
XT2 W ONLY



17

XT1 - XT2 - XT3 - XT4/F - P

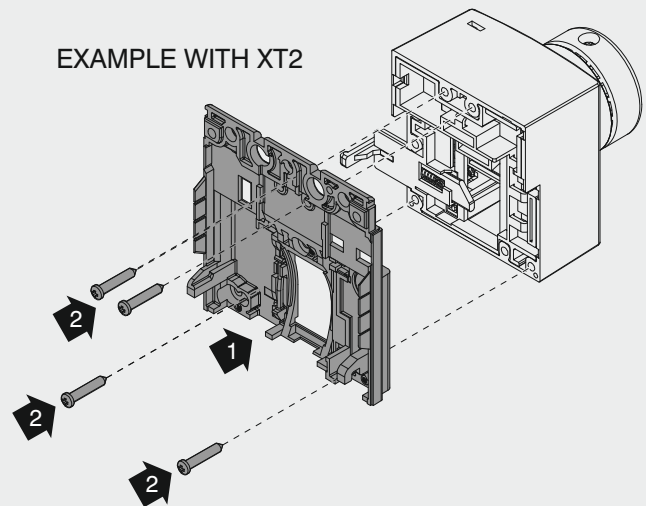
EXAMPLE WITH XT2

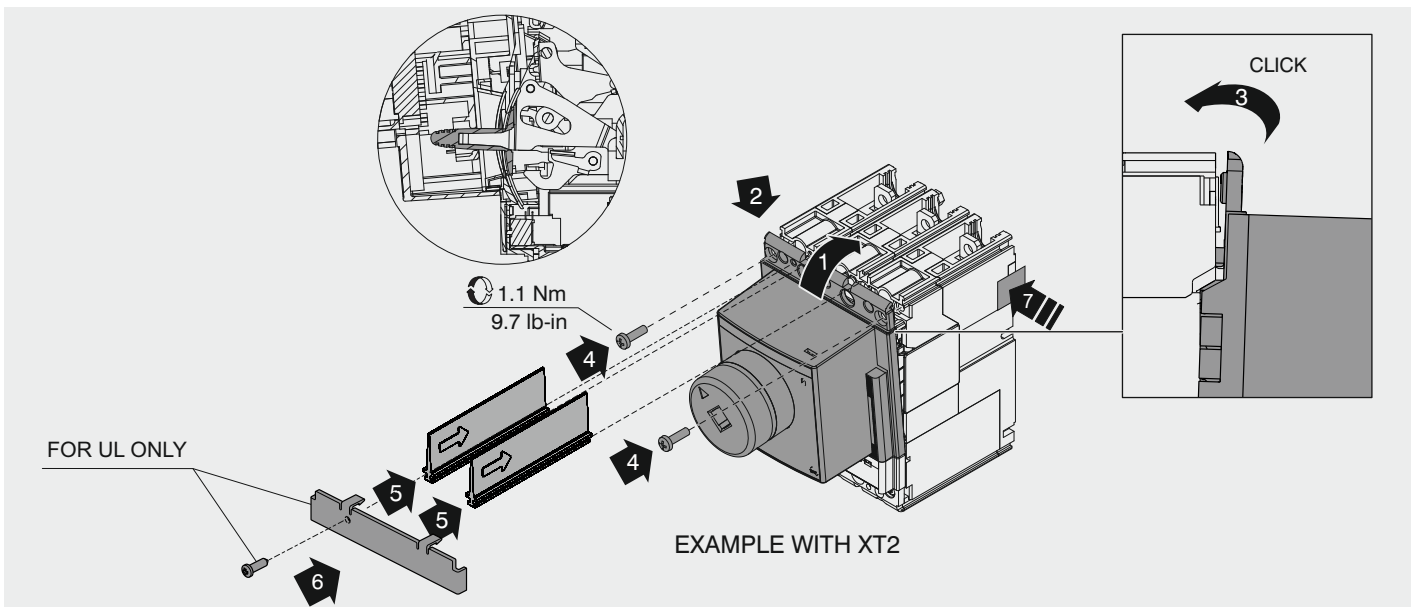
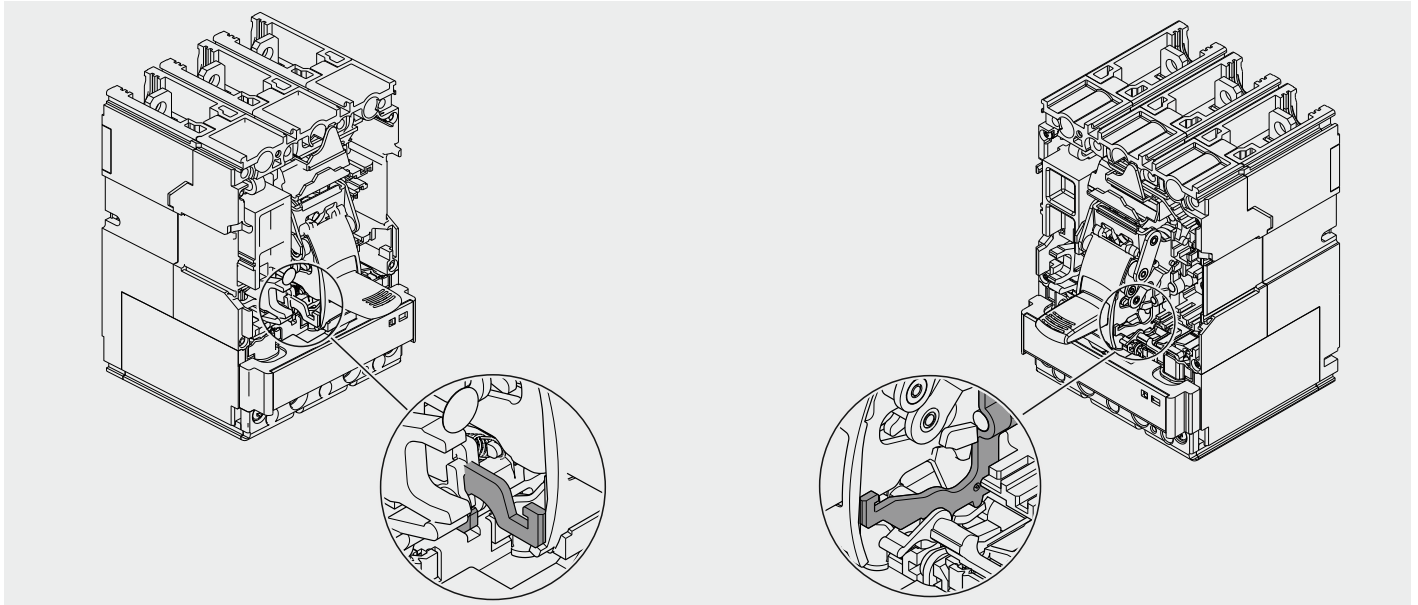
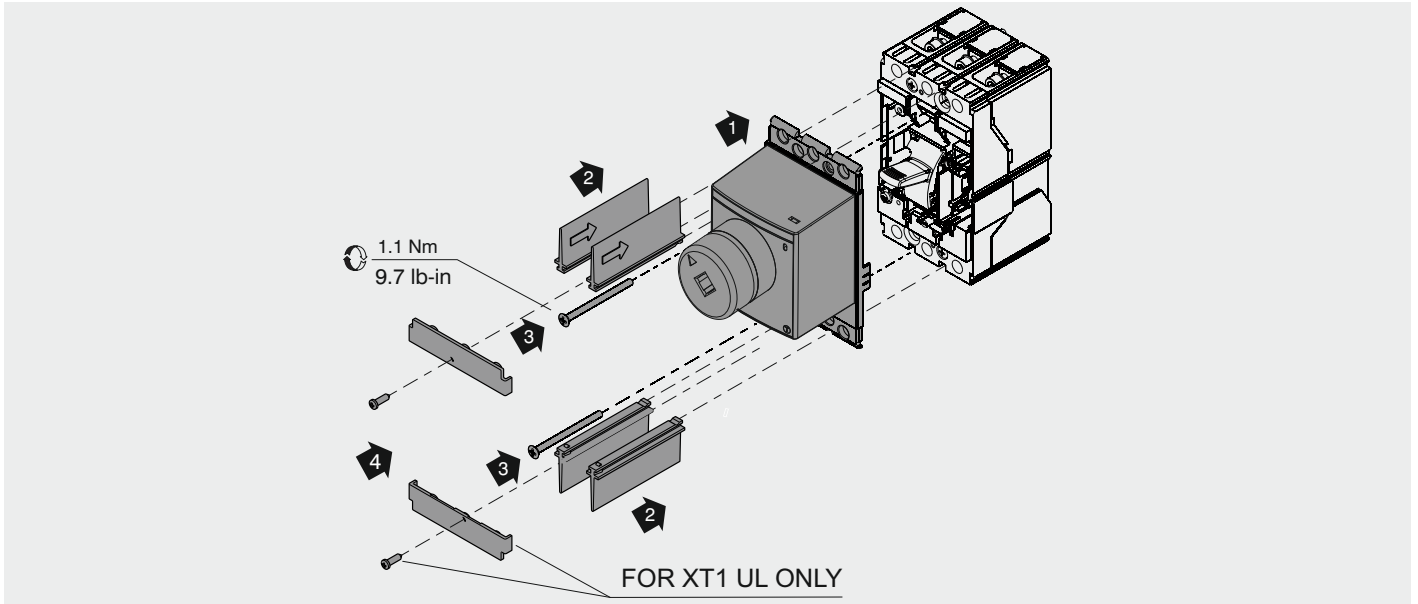


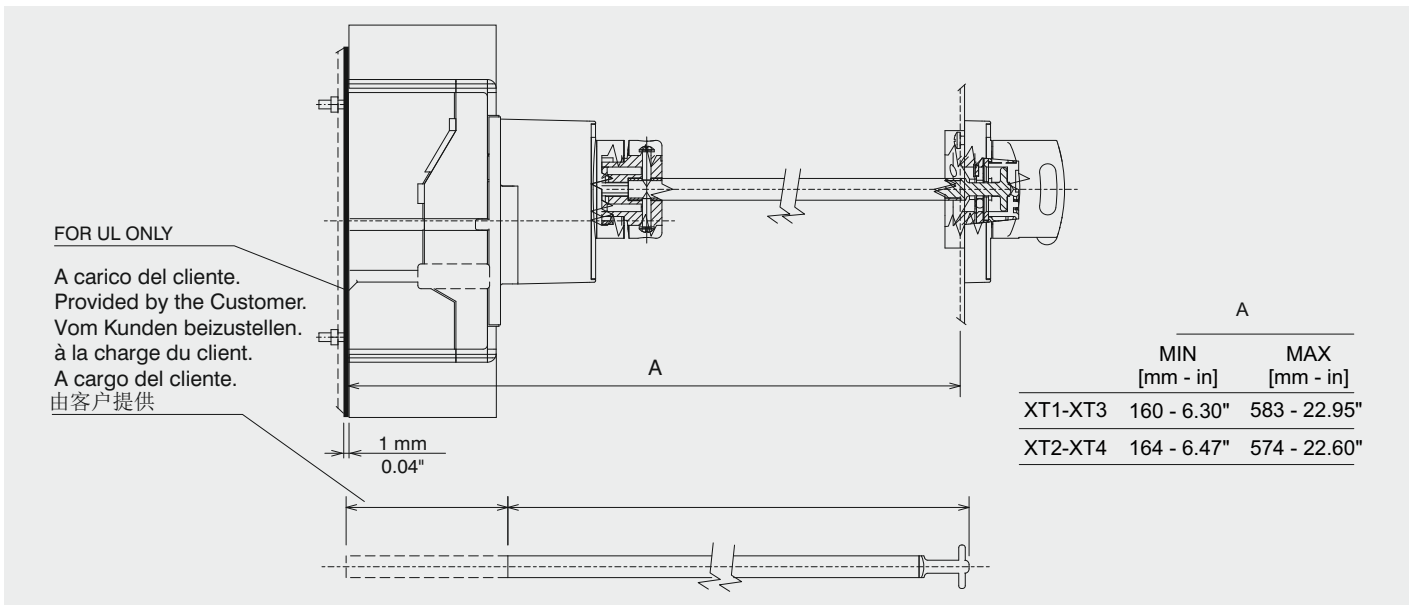
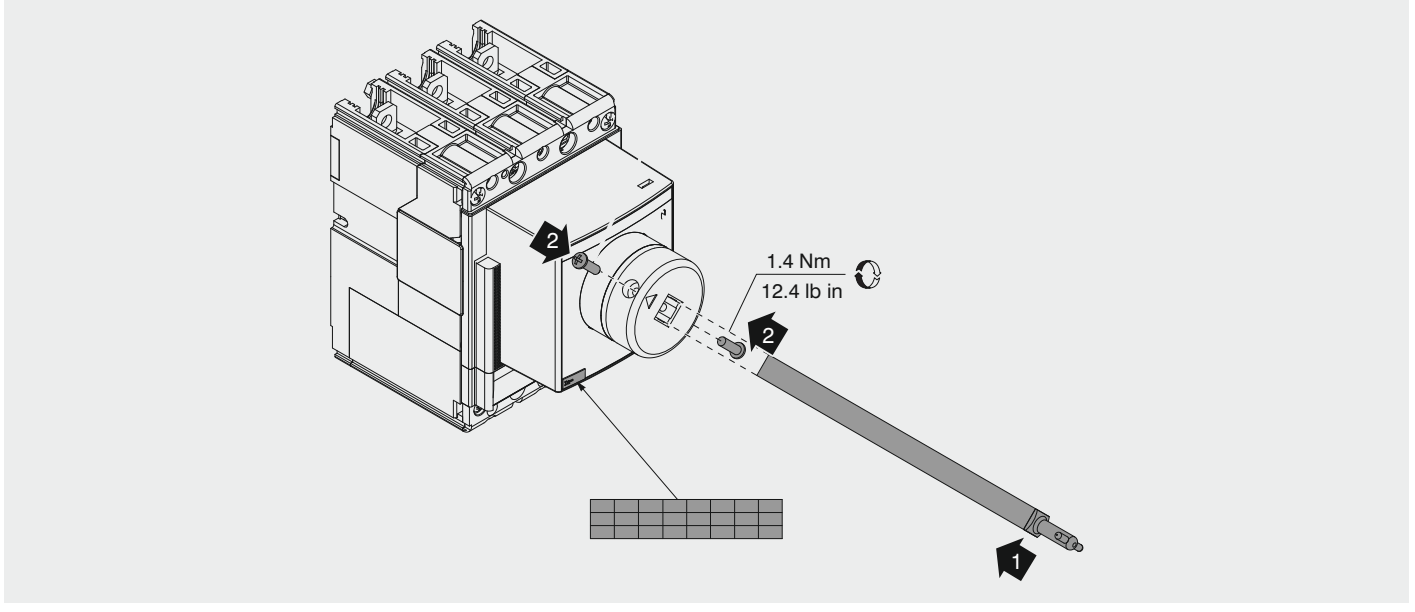
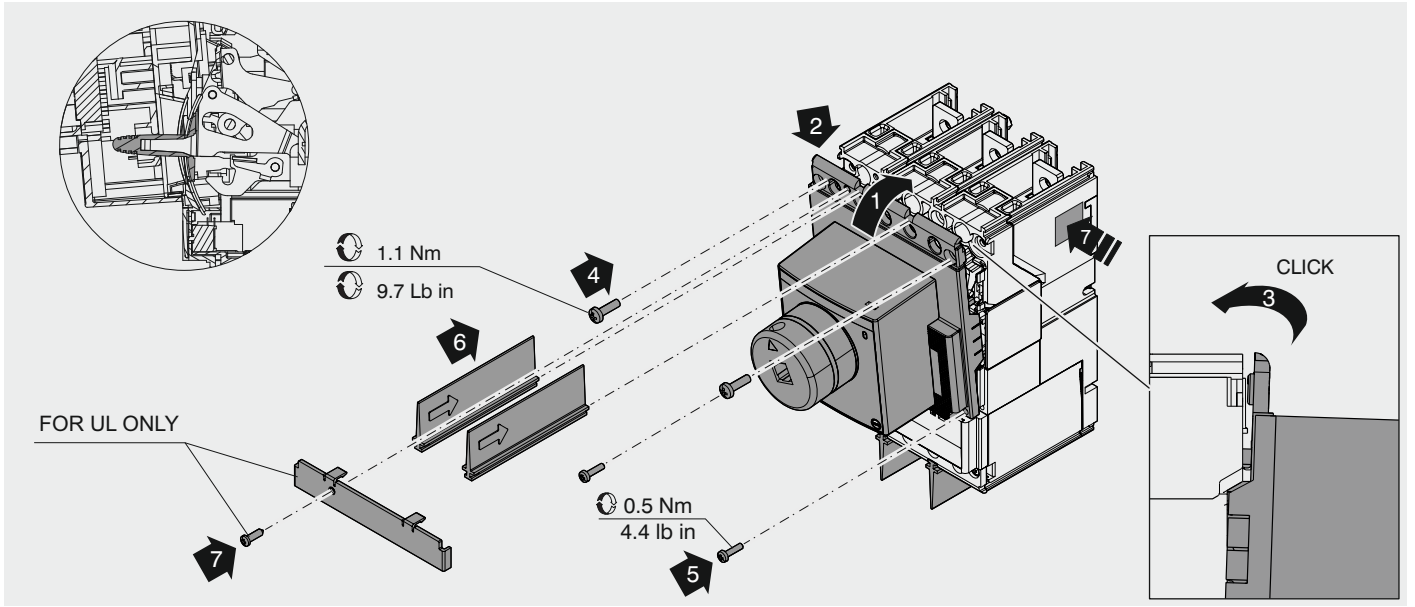
18

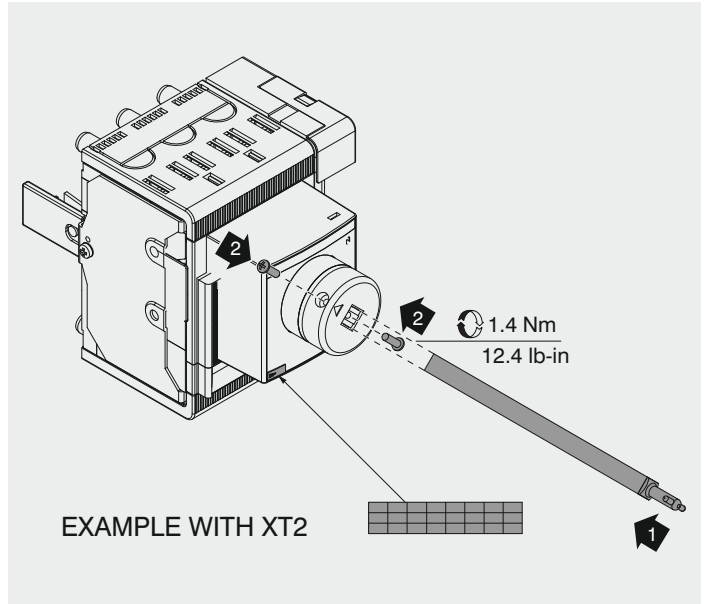
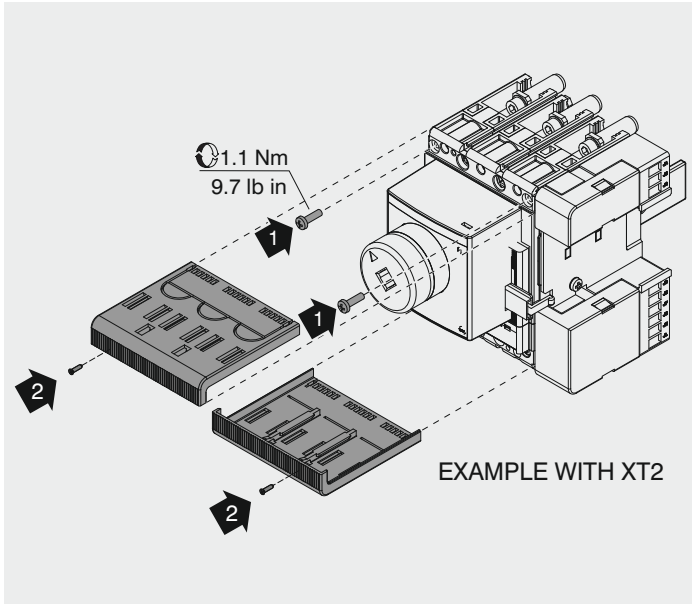
XT1 - XT2 - XT3 - XT4/W

EXAMPLE WITH XT2









		A	
	MOUNTING	MIN [mm - in]	MAX [mm - in]
XT1-XT3	AT 50mm - 1.97"	210 - 8.27"	633 - 24.92"
P - W	AT 70mm - 2.76"	230 - 9.06"	653 - 22.17"
XT2-XT4	AT 50mm - 1.97"	221 - 8.70"	631 - 24.84"
P - W	AT 70mm - 2.76"	241 - 9.49"	651 - 25.63"

A cura del Cliente.
Under the Customer's responsibility.
Vom Kunden beizustellen.
À la charge du Client.
A cargo del Cliente.
由客户负责

