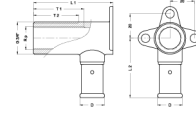


## 7P-1605: Backplate elbow male 16x3/4"



### Commercial information

The body of the fitting is made from CW617N brass. These fittings offer great advantages with regard to corrosion and they are also also better for the environment.

- The fitting has a buffer ring that prevents direct galvanic contact between the aluminium of the pipe and the brass of the fitting.
- This excludes the possibility of electrolysis occurring.
- The fitting is equipped with O-rings made from EPDM and RVS pressure sleeves with 3 inspection windows.
- In order to prevent assembly errors, the dimensions and type of press profile which can be pressed are shown on the RVS sleeves

### Basic unit dimensions

Height	78 mm
Length	77 mm
Width	52 mm
Net weight	0.290 kg

### Certificates

ATG, DVGW Wasser, ETA, KIWA, ÖVGW Wasser, WRAS, KOMO, STF, ÖN EN 21003-2/-3, GOST-R, ITC, TSU, QB (CSTBat), AFNOR, ACS, PZH, DNV-GL, Sans 21003, Kontrol Biro, EMI

### Applications

Potable water, Heating, Compressed air, Cooling, Sanitary

### Solutions

Building installations, Industry, Utility, Shipbuilding

## Technical characteristics

Housing material	Brass	Outer pipe diameter connection	16 Millimetre
Housing material	Brass	Length of connection 1	60.15 Millimetre
Surface protection	Untreated	Working length connection 1	47 Millimetre
Shape	Right-angled	Length of connection 2	78 Millimetre
Thread size	3/4 inch	Working length connection 2	61 Millimetre
System specific	✓	Length from wall plate	78 Millimetre
Nominal diameter connection 2	3/4 inch (20)	Length of connection 3	0 Millimetre
Connection	Press sleeve	Working length connection 3	0 Millimetre
Thread size tap connection	3/4 inch	Medium temperature (continuous)	-10 70 Degrees celsius
Contour code	TH	Max. operating pressure at 20 °C	16 Bar
DVGW quality mark for gas	✗		
DVGW quality mark for water	✓		
KIWA certified	✓		
Gastec QA mark	✗		
KOMO certified	✓		
Type approval according to BBR/EKS	✗		