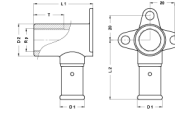


2P-1404K: Backplate elbow female short model 14x1/2"



Commercial information

The body of the fitting is made from CW617N brass. These fittings offer great advantages with regard to corrosion and they are also better for the environment.

- The fitting has a buffer ring that prevents direct galvanic contact between the aluminium of the pipe and the brass of the fitting.
- This excludes the possibility of electrolysis occurring.
- The fitting is equipped with O-rings made from EPDM and RVS pressure sleeves with 3 inspection windows.
- In order to prevent assembly errors, the dimensions and type of press profile which can be pressed are shown on the RVS sleeves

Basic unit dimensions

Height	35 mm
Length	76 mm
Width	52 mm
Net weight	0.133 kg

Certificates

ATG, DVGW Wasser, ETA, KIWA, ÖVGW Wasser, WRAS, KOMO, STF, ÖN EN 21003-2/-3, GOST-R, ITC, TSU, QB (CSTBat), AFNOR, ACS, PZH, DNV-GL, EMI

Applications

Potable water, Heating, Compressed air, Cooling, Sanitary

Solutions

Building installations, Industry, Utility, Shipbuilding

Technical characteristics

Housing material	Brass	Outer pipe diameter connection	14 Millimetre
Housing material	Brass	Length of connection 1	30.5 Millimetre
Surface protection	Untreated	Working length connection 1	25 Millimetre
Shape	Right-angled	Length of connection 2	32 Millimetre
Thread size	1/2 inch	Working length connection 2	32 Millimetre
System specific	✓	Length from wall plate	32 Millimetre
Nominal diameter connection 2	1/2 inch (15)	Length of connection 3	0 Millimetre
Connection	Press sleeve	Working length connection 3	0 Millimetre
Thread size tap connection	1/2 inch	Medium temperature (continuous)	-10 70 Degrees celsius
Contour code	TH	Max. operating pressure at 20 °C	16 Bar
DVGW quality mark for gas	✗		
DVGW quality mark for water	✓		
KIWA certified	✓		
Gastec QA mark	✗		
KOMO certified	✓		
Type approval according to BBR/EKS	✗		