

34 444 979 Product version from 6/1/2025



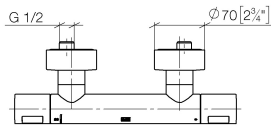
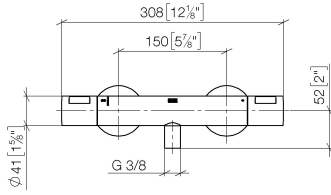
- with volume control
- with FlowReduce function
- slide-on rosettes Ø 70 mm
- 3/8" shower outlet
- 1/2" connection
- gauge 150 mm - 13 mm

Notes:

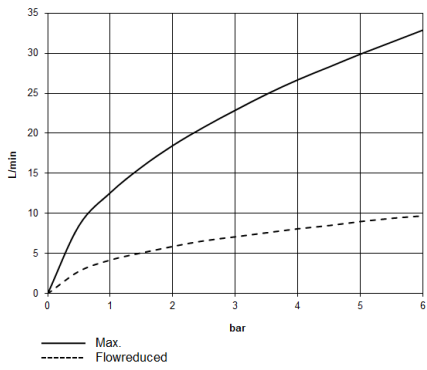
	Brushed Dark Bronze (PVD)	34 444 979-43
	Chrome	34 444 979-00
	Brushed Platinum	34 444 979-06
	Platinum	34 444 979-08
	Dark Chrome	34 444 979-19
	Light Gold (PVD)	34 444 979-26
	Brushed Light Gold (PVD)	34 444 979-27
	Brushed Durabronze (23kt Gold)	34 444 979-28
	Matte Black	34 444 979-33
	Brushed Gold (PVD)	34 444 979-37
	Brushed Dark Brass (PVD)	34 444 979-39
	Brushed Bronze (PVD)	34 444 979-42
	Brushed Champagne (22kt Gold)	34 444 979-46
	Champagne (22kt Gold)	34 444 979-47
	Brushed Chrome	34 444 979-93
	Brushed Dark Platinum	34 444 979-99

34 444 979 Product version from 6/1/2025

mm [inches]



Flow rate chart



Codes & Standards

EN 1717



Shower thermostat for wall mounting - Brushed Dark Bronze (PVD)

SERIES SPECIFIC

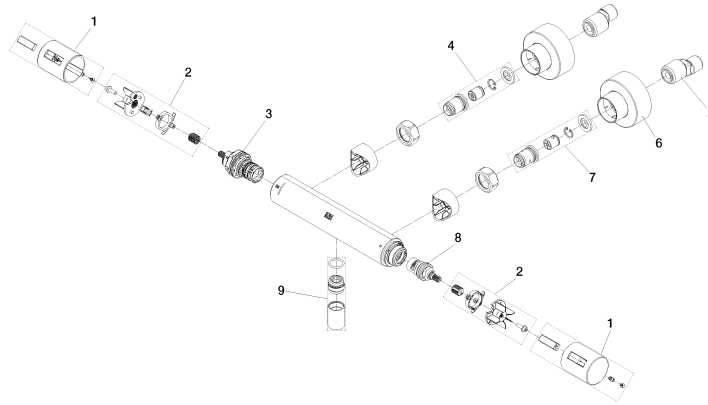
34 444 979 Product version from 6/1/2025

Certificates and sustainability

EPD-DOR-20230287 Belgaqua_25-342-2
-IBA1-EN
Environmental.prod
uct-declarat

34 444 979 Product version from 6/1/2025

Parts for other finishes can be found here: [Chrome](#)



Spare parts list

No.	Item Number	Name	Quantity used	Delivery time
	6 90 31 20 057 00-43	Rosette two-piece Ø 70 mm - Brushed Dark Bronze (PVD)	1.00	-
Spare part can no longer be ordered, please order the replacement item				
	9 90 21 02 069 01-43	cover	1.00	-
Spare part can no longer be ordered, please order the replacement item				
	7 90 31 20 540 00 90	Connection Seat without lug right -	1.00	14
	3 90 15 02 071 00 90	Thermostat cartridge -	1.00	14
	1 90 17 33 030 01-43	handle	2.00	-
Spare part can no longer be ordered, please order the replacement item				
	8 90 90 03 236 00 90	Head part 1/2" -	1.00	14
	5 04 11 04 030 00 90	S-connection with sound damper and seal 1 pair G1/2 x G3/4 -	1.00	14
	2 90 12 12 072 00 90	Retainer for thermostat handle Ø 15 x 12 mm -	2.00	14
	4 90 31 20 530 00 90	Connection Seat without lug left -	1.00	14