

INSAVER SLIM IP65

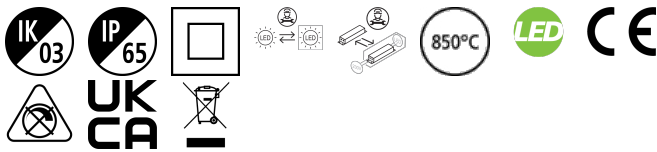
Insaver Slim UGR19 IP65 150 1200lm 840

0030529



Product features

- Insaver Slim is a ceiling recessed LED downlight (IP65 from the front and back), Die-cast aluminium body, loop in loop out connector for quick installation, Non dimmable LED driver, 9.5W; 1200lm; 126lm/W; 4000K; UGR <19 with shallow product depth 50mm. IK07 for the fixture, IK03 for the IP driver box. When using with EM kit (0046600& 0046601), protection IP65 kept only from the front. Meets TP(a) requirements.



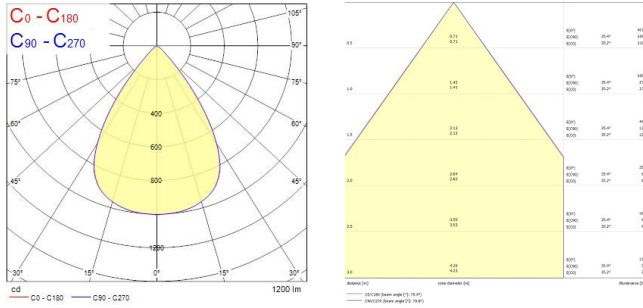
PRODUCT OVERVIEW

Product name	Insaver Slim UGR19 IP65 150 1200lm 840
Technology	LED
Cap/Base	N/A
Housing	Aluminium
Mount	Ceiling recessed mounting
General application	Hospitality, Office, Retail
ETIM Class	EC001744
E-number FI	4579607
Warranty	5 years
Fixture luminous flux (lm)	1200
Luminaire efficacy (lm/W)	126
Colour temperature (K)	4000
Light colour	Neutral White
CRI (Ra)	80
Colour Variation Initial (SDCM)	SDCM3
Beam Angle (°)	70
Glare control	< 19
Photobiological Risk Group	RG1
Total power consumption (W)	9.5
Electrical protection	Class II
Control gear type	LED driver constant current
Dimmable	No
Dimming method	N/A
LED Flickering Rate	Ultra low (5% or less)
Housing colour	RAL 9010 - Pure white
IP rating	IP65
IK rating	IK03
Product EAN number	5410288305295

PHOTOMETRY

INSAVER SLIM IP65

Insaver Slim UGR19 IP65 150 1200lm 840
0030529



TECHNICAL DRAWINGS

